

# Kid Scoop

THE AWARD-WINNING PRINT & ONLINE FAMILY FEATURE



© 2021 by Vicki Whiting, Editor Jeff Schinkel, Graphics Vol. 37, No. 51

## Talk Like a Pilgrim

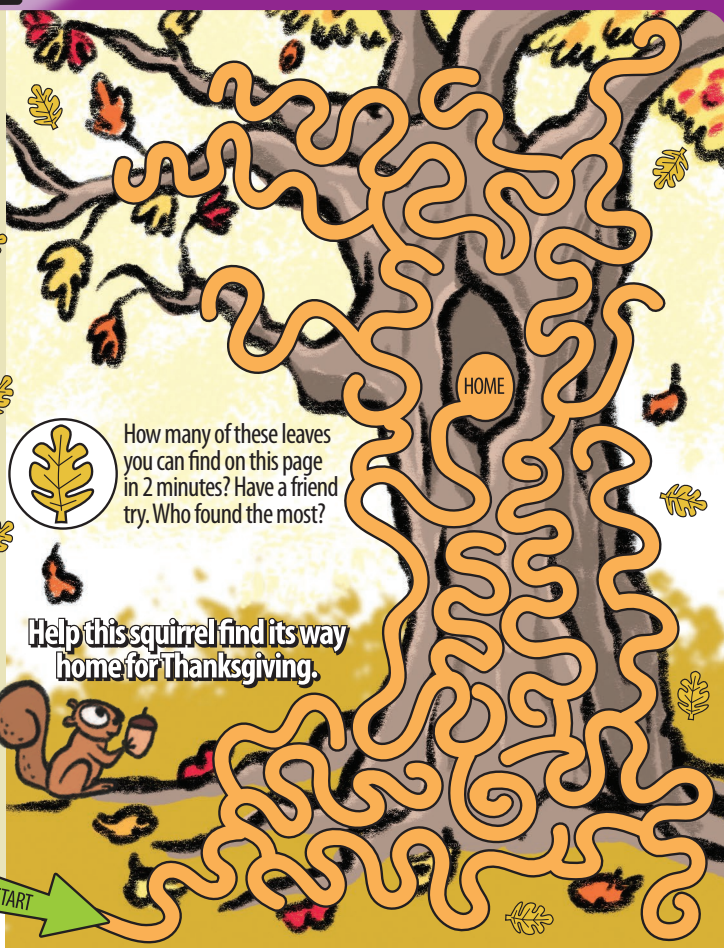
Plymouth Patuxet Museums in Plymouth, Mass, can help you talk like a pilgrim! In the 1600s, the pilgrims spoke English, but a little differently than we do today.

The Museum has gathered some of the words, greetings and phrases that would have been used by pilgrims. Compare them to how we would say the same thing today. Practice these at home and you can talk like a pilgrim, too!

TODAY	PILGRIM TALK
Hi! How are you?	What cheer?
Excuse me.	Pray pardon me.
Congratulations!	Huzzah!
Goodbye!	Fare thee well!
Cat	Mouser
Pants	Breeches
Skirt	Petticoat
Stew	Pottage
Pillowcase	Pillowbere

Special thanks to Plymouth Patuxet Museums for their help with the content of today's page!

For more learning fun, visit them at: [plymouth.org](http://plymouth.org)

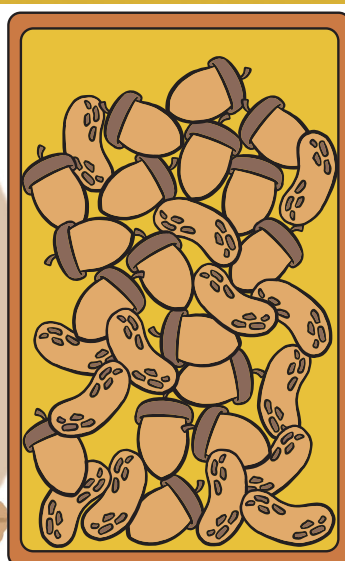


How many of these leaves you can find on this page in 2 minutes? Have a friend try. Who found the most?

Help this squirrel find its way home for Thanksgiving.

## Squirrel Family Thanksgiving Feast

Cozy in their tree home, the Squirrel family is enjoying a Thanksgiving feast of acorns and nuts. Examine their storage bin at right and color the graph to show how many nuts and acorns they have left for the holidays.



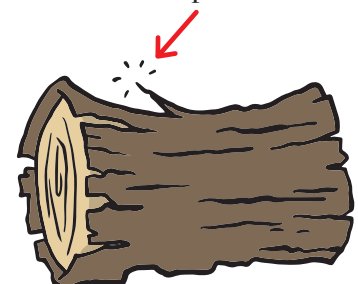
ACORNS	NUTS

## Pilgrim Riddles

The Plymouth Patuxet Museums collected riddles from the 1600s. Draw a line from each riddle to the picture it describes.

**EXAMPLE:** *I went to the woods and I caught it, I sat me down and I sought it, but since I could not find it, home with me I brought it? What is it?*

**ANSWER:** A splinter!



Who is he that runneth through the hedge, his house on his back?

What is higher than a house and yet seems smaller than a mouse?

What is full all day and empty at night?

What is ten men's length and ten men's strength and yet ten men can never make it stand on its end?



Content reproduced courtesy of **PILIMOTH PATUXET MUSEUMS**. Visit [Plymouth.org](http://Plymouth.org) to learn more!

## A List of Thanks

Look through the newspaper and cut out words and pictures that show things and people you are thankful for. Glue these on to a piece of paper and share with others on Thanksgiving. **BONUS:** Glue these on to a piece of large construction paper to make a Thanksgiving placemat!

Standards Link: Visual Arts: Use a variety of materials for projects.

## Kid Scoop Puzzler

Use the letters in the word **THANKSGIVING** to make new words.

_____	_____
_____	_____
_____	_____
_____	_____
_____	_____
_____	_____
_____	_____
_____	_____
_____	_____
_____	_____
_____	_____
_____	_____
_____	_____
_____	_____
_____	_____

Mix up the letters any way you like. You can use a letter twice in your new word only if it appears twice in the word Thanksgiving. How many words can you make?

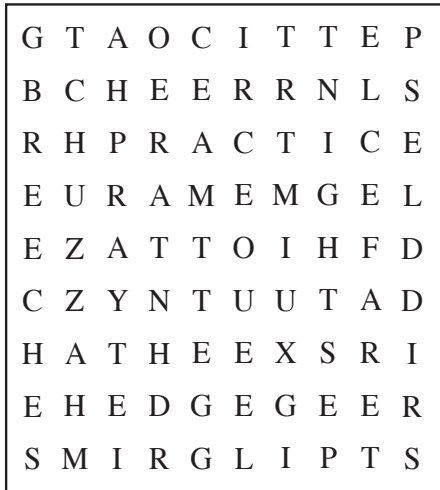
5-10 words **GOOD**    11-19 words **GREAT!**    20-39 words **AWESOME!**    40 words or more **WORD MASTER!**

Standards Link: Spelling: Spell grade-level words correctly.

## Double Double Word Search

- PILGRIMS
- PETTICOAT
- PRACTICE
- BREECHES
- PLIMOUTH
- PATUXET
- RIDDLES
- HUZZAH
- MOUSE
- HEDGE
- NIGHT
- CHEER
- PRAY
- THEE
- FARE

Find the words in the puzzle. How many of them can you find on this page?



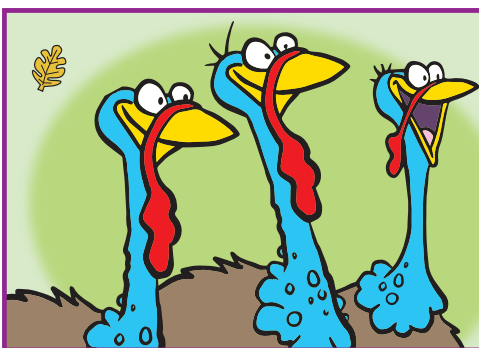
Standards Link: Letter sequencing. Recognize identical words. Skim and scan reading. Recall spelling patterns.

## FROM THE Kid Scoop LESSON LIBRARY

### Newspaper Riddles

Select a picture in the newspaper. Write three to five clues that would help someone identify that picture. Write these clues as a riddle and see if a friend can read your riddle and find the picture looking through the newspaper.

Standards Link: Language Arts: Write descriptively.



What did the turkeys say when they saw the pilgrims at Plymouth Rock?

ANSWER: "They seem nice. Maybe they'll invite us to dinner!"

Thank you for supporting **Newspapers In Education**

Thankyou Teri Carpenter

- Bridgewater Bistro
- Chinook Marine Repair Shop
- Randall Lees Flooring America
- Red Dwarf Graphx
- Seaside Visitors Bureau

**TLC**  
A DIVISION OF FibreFederal CREDIT UNION  
85 W Marine Dr Astoria  
2315 N Roosevelt Dr Seaside  
1771 SE Ensign Ln Warrenton  
[www.tlfcu.org](http://www.tlfcu.org) • 503.842.7523

**QUACKENBUSH BUILDERS, INC.**  
Quality Construction from Design to Finish  
**503-440-2827**

**NORTHWEST READY MIX**  
950 Olney Ave • Astoria  
503-325-3562

**North Coast HOME CARE**  
Home Oxygen • Medical Equipment  
2230 EXCHANGE ST. | ASTORIA | 503-325-9906

**THE HOME DEPOT**  
1650 SE Ensign Lane  
WARRENTON  
503-861-9999

**COLUMBIA RIVER MARITIME MUSEUM**  
1792 MARINE DR • ASTORIA

**COLUMBIA VETERINARY HOSPITAL**  
576 31ST STREET ASTORIA  
503-325-2250

**Great Ocean DA YANG**  
Da Yang Seafoods LTD.

**COLUMBIA RIVER BAR PILOTS**  
PROVIDING SAFE PASSAGE SINCE 1846

**Lower Columbia Hospice**  
A COLUMBIA MEMORIAL HOSPITAL AFFILIATE  
2158 Exchange St. | Suite 206  
Astoria | 503-338-6230

**S&F Land Services**  
Land Surveying & Remote Sensing  
1725 N. Roosevelt Drive Suite B | Seaside  
503-738-3425

**Northwest West Inc. Income Tax Preparation**  
762 Avenue G • Seaside, OR 97138  
503-738-3480

**Tires LES SCHWAB**  
**McCALL TIRE CENTER**  
WARRENTON 861-3252  
1167 SE Marlin SEASIDE 738-8243  
2155 S. Roosevelt

**HAMPTON LUMBER MILLS**

**Classic BODYWORKS**  
AND TOWING  
503.325.0411  
34747 Hwy 101 Bus. ASTORIA

**LEWIS & CLARK TIMBERLANDS**  
MANAGED BY GREENWOOD RESOURCES

**Astoria's Best SOLUTIONS**  
for home users and small business  
77 11th Street, Suite H Astoria | 503-325-2300

**Teerin Bros LAND & TIMBER**  
ASTORIA | 503-556-0410

**Clatsop County FAIR & EXPO**  
92937 Walluski Loop | Astoria  
503-325-4600

**Bayshore Animal Hospital**  
325 Marlin Avenue WARRENTON  
503-861-1621

**CLATSOP BEHAVIORAL HEALTHCARE**  
65 N. Hwy 101 Suite 204 Warrenton  
503-325-5722

**RE/MAX River & Sea**

**ASTORIA GRANITE WORKS**  
QUALITY STONE WORK SINCE 1917  
423 GATEWAY AVE. • ASTORIA | 503-325-0761

**Home Furnishings**  
1033 Commercial Street Astoria, Oregon 97103  
(503) 325-5620

**Premium ADJUSTABLE BEDS**  
ASTORIA • 503-325-1974

**TERRY'S PLUMBING**  
Commercial & Residential 503-325-5180

**JJ ELECTRIC SERVICE**  
Quality Work at Affordable Rates  
503-739-7145  
712 S. Holladay Seaside, Oregon  
[www.jjelectricservice.com](http://www.jjelectricservice.com)

**Morgan Civil Engineering**  
PO Box 358 • Manzanita  
503-368-6186