

Continued from Page 6

The tribal leaders and cultural specialists spoke with enthusiasm about the find and the value of Landry's artwork in March 2020 when they first prepared the exhibit to open.

But COVID-19 delays have an unexpected positive outcome.

In the interim, after publicity regarding the project, Shoalwater and Quinalt house-holds stepped up to share their personal Landry art.

A person from out of state donated a Landry painting from 1963 that her father had bought at auction. And, thanks to an online appeal that asked for information about unidentified portraits, artist's models from the 1960s and 1970s, now elders, shared memories which are incorporated into the revised exhibit.

'Phoenix'

Landry was married for seven years to Sharon Billingsley, an artist and model. They traveled to Paris, Mexico and the Philip-pines to study art and visit professional heal-ers. He later operated a gallery in California. In 1965, they both painted their versions of a still life. These canvasses have been reunited for the exhibit.

Photography by tribal member Erik San-chez is also displayed. Sanchez, a film-making student at the Institute of American



Don Norkoski
Fred Landry and his son, Eugene, are pictured in the dome in 1976, where the artist painted much of his work.

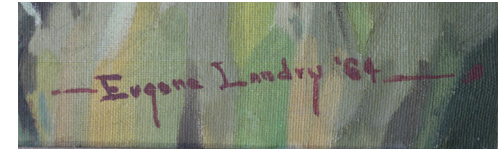
Indian Arts, has worked on a documen-tary about Landry; a version appears on YouTube.

The Shoalwater Tribe incorporated the Lower Chehalis, Shoalwater Bay and Chi-nookan people; the reservation earned its federal designation in 1866.

Last year, Charlene Nelson, Shoalwater Bay chairwoman, described the exhibit as, "bringing back part of our history." Altruda has a similar view. "Like a phoenix rising from the ashes, the art serves as a testament to the enduring power of the human spirit," she noted.



Judith Altruda
Shoalwater Bay tribal member Mary Downs holds the portrait that Gene Landry painted of her in 1969. It is displayed with other restored works in the exhibit.



Patrick Webb
Eugene Landry's distinctive signature.

Coastal Living

An advertisement for Lower Columbia Bowl. It features a bowling ball and pins on the left. A red arrow points to a sign that says "LOWER COLUMBIA BOWL" with a star. Below the sign, it says "NOW OPEN" in large yellow letters. At the bottom, it lists the address "826 Marine Dr. Astoria" and the phone number "503-325-3321".

An advertisement for Discover Our Coast. It features a laptop and a tablet displaying scenic coastal views. The text says "Discover More!" at the top. At the bottom, it says "DiscoverOurCoast.com" with a logo of three wavy lines.

An advertisement for Lower Columbia Bowl. It features a sign that says "LOWER COLUMBIA BOWL" with a star. Below the sign, it says "SAFE, SANITIZED, READY TO ROLL" in large yellow letters. Underneath, it says "Bowling is Back!" and "\$1 OFF WEDNESDAYS". At the bottom, it lists a list of items: "Take \$1 off: Shoe rental, Every Game, Fountain Sodas, Adult Beverages". A cartoon character wearing a face mask and holding up two hands is also present.

**ADVERTISE
YOUR
BUSINESS
HERE!**

**Call us at
503-325-3211
to learn more**