

THE BEAUTY WITHIN 'LONE'

Astoria gallery exhibit puts focus on solitary work

BY CAROLYN HOARD

“Lone,” a photography exhibit by Jody Miller, is on view now at LightBox Photographic Gallery in Astoria. Miller has lived in Astoria part-time for 15 years. Her photographic collection features images sensing the power and emotion of being alone as a state of mind and a state of being. The images in the show are photos Miller took alone that convey a feeling of loneliness.

Coast Weekend talked to Miller about her work, process and creating amid the pandemic.

Q: You started taking photos with the Kodak Brownie at the age of 9. Who gave you your first camera?

If You Go

LightBox Photographic Gallery

1045 Marine Drive, Astoria

Gallery viewing hours:
Wednesday, Thursday, Friday
and Saturday 12 p.m. to
5 p.m. or by appointment.

A: My parents gave me that camera. My father was a very gifted photographer and they gifted me with that camera at 9 and I drove them crazy with it.

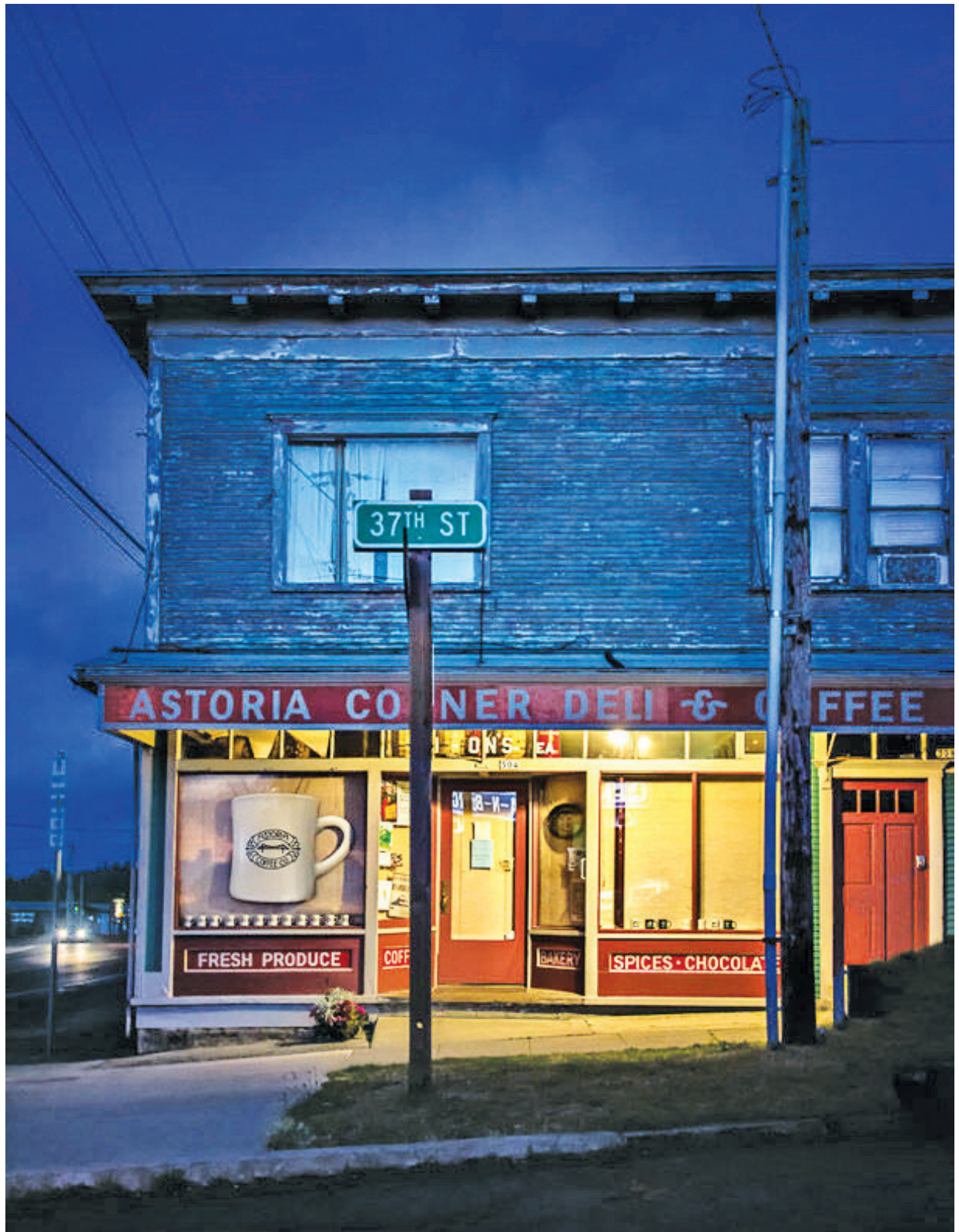
Q: You've described photography as a “solitary process.” Can you elaborate on that?

See Page 9



Carolyn Hoard

Photographer Jody Miller stands next to her favorite piece on display at LightBox Photographic Gallery.



Jody Miller

‘Corner Coffee,’ by Jody Miller, is one of the photos on display at LightBox Photographic Gallery.

COLUMBIA RIVER MARITIME MUSEUM

3D Theater • Lightship Tour • Gift Store

OPEN DAILY 9:30 TO 5:00 • 1792 Marine Drive, Astoria, OR
503.325.2323 • www.cmmm.org

