

Kid Scoop

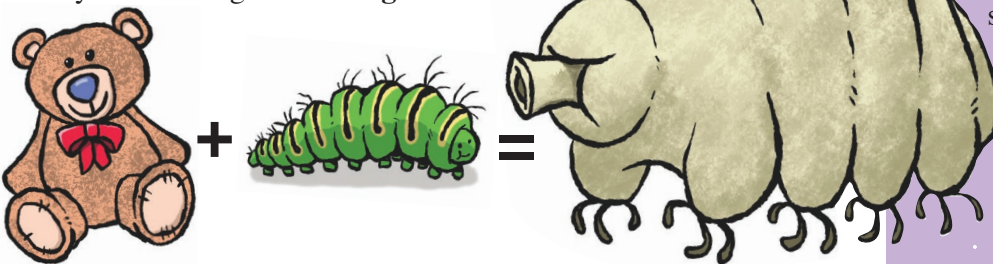
THE AWARD-WINNING PRINT & ONLINE FAMILY FEATURE



© 2021 by Vicki Whiting, Editor Jeff Schinkel, Graphics Vol. 37, No. 37

TARDIGRADES TOUGHEST ANIMAL ON EARTH

Imagine an animal that looks like a combination of a caterpillar and a teddy bear. Can you picture that? Then you have imagined a **tardigrade**!



Tardigrades, sometimes called water bears or moss piglets, are really tiny. They're **microscopic**—you need a microscope to see them.

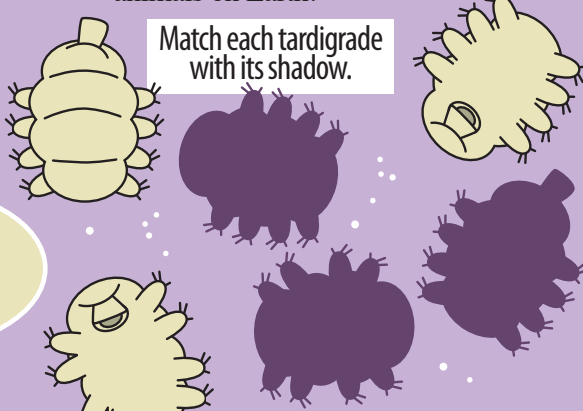
SURVIVED **INFORMATION** **REPLACE THE MISSING WORDS.** **SPACECRAFT** **HARSH** **REASON** **SURFACE** **LIVING**

Tardigrades on the Moon

In 2019, a small _____ called *Beresheet*, crashed on the _____ of the moon.

Beresheet was carrying a special "library." This library had all kinds of _____ about Earth, including some tiny tardigrades.

Some scientists think the tardigrades may have _____ the crash. They can survive all kinds of situations, including times with no water and no air. That's just one _____ they are often considered the toughest animals on Earth.



Match each tardigrade with its shadow.

A tardigrade's tiny feet have claws to help grip surfaces. A tardigrade's mouth is a tiny tube. They use this to suck food out of plants and animals.

WHERE TARDIGRADES LIVE

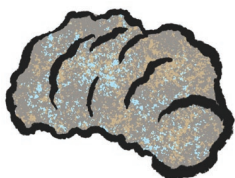


WHERE ON EARTH?

Tardigrades live **everywhere** on planet Earth. They live in the ocean and in every climate zone!

Here's a helpful tardigrade chart I made!

TARDIGRADE TOUGHNESS



When it is dry, tardigrades shrink into a little pill shape called a **tun**. They slow their breathing and **metabolism** to a death-like state. They can survive like this, without water, for **decades**. Once they get wet again, they come back to life in just a few hours!

WORD BOX

Metabolism: The processes in plants and animals by which food is changed into energy or to make cells and tissue.

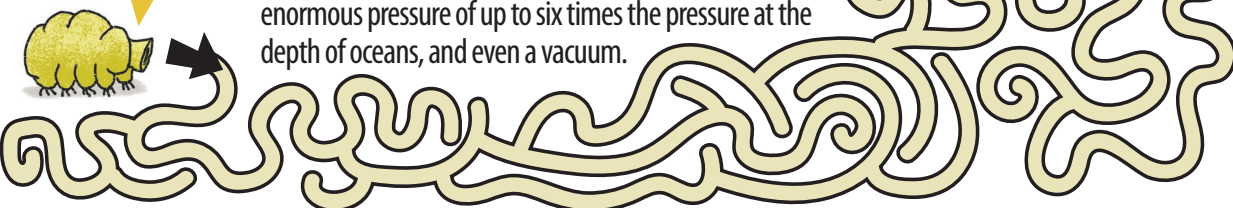
Use the Code

Tardigrades can withstand cold as low as negative _____ °F (-200°C)
They can live in temps as high as _____ °F (148.9°C).

	= 0		= 5
	= 1		= 6
	= 2		= 7
	= 3		= 8
	= 4		= 9

Tardigrades can survive high radiation, boiling liquids, enormous pressure of up to six times the pressure at the depth of oceans, and even a vacuum.

Can you help me reach the water droplet?



Kid Scoop Puzler

What do tardigrades eat?

Tardigrades really like to live in damp moss where they get all the food and water they need to thrive. Circle every other letter to discover the things tardigrades like to eat.

P K O N A P N C T R S Y B M
A S C B T U E G R H I Y A L A
C N F D S M W E D A Q T A

PL

Double Double Word Search

TARDIGRADE
CLIMATE
SURVIVE
LIBRARY
DECADES
TOUGH
CRASH
STATE
HARSH
CLAWS
TINY
DAMP
TUBE
PILL
WET

Find the words in the puzzle. How many of them can you find on this page?

C R E A T H S R A H
U R D E C A D E S G
C E S S W A L C Y U
T R T U B E L S R O
E D A R G I D R A T
W V T S M I A S R I
I T E A H T M H B N
E M T L L I P O I Y
O E V I V R U S L N

Standards Link: Letter sequencing. Recognize identical words. Skim and scan reading. Recall spelling patterns.

FROM THE Kid Scoop LESSON LIBRARY

Decade Math

A decade is 10 years. Look through the newspaper for three numbers that are more than ten. Rewrite each one as decades and years. For example, 54 is five decades and four years.

Standards Link: Mathematics: Understand base 10 place value.



How do pennies look under a microscope?

ANSWER: Magnificent

COLUMBIA RIVER MARITIME MUSEUM
1792 MARINE DR • ASTORIA

COLUMBIA VETERINARY HOSPITAL
576 31ST STREET ASTORIA
503-325-2250

Great Ocean DA YANG
Da Yang Seafoods LTD.

COLUMBIA RIVER BAR PILOTS
PROVIDING SAFE PASSAGE SINCE 1846

Lower Columbia Hospice
A COLUMBIA MEMORIAL HOSPITAL AFFILIATE
2158 Exchange St. | Suite 206 Astoria | 503-338-6230

S&F Land Services
Land Surveying & Remote Sensing
1725 N. Roosevelt Drive Suite B | Seaside
503-738-3425

Northwest West Inc. Income Tax Preparation
762 Avenue G • Seaside, OR 97138
503-738-3480

Tires LES SCHWAB
McCALL TIRE CENTER
WARRENTON 861-3252
1167 SE Marlin SEASIDE 738-8243
2155 S. Roosevelt

HAMPTON LUMBER MILLS

Classic BODYWORKS
AND TOWING
503.325.0411
34747 Hwy 101 Bus. ASTORIA

LEWIS & CLARK TIMBERLANDS
MANAGED BY GREENWOOD RESOURCES

Astoria's Best SOLUTIONS
for home users and small business
AstoriasBest.com 77 11th Street, Suite H Astoria | 503-325-2300

Kevin Bros LAND & TIMBER
ASTORIA | 503-556-0410

Clatsop County FAIR & EXPO
92937 Walluski Loop | Astoria
503-325-4600

Bayshore Animal Hospital
325 Marlin Avenue WARRENTON
503-861-1621

CLATSOP BEHAVIORAL HEALTHCARE
65 N. Hwy 101 Suite 204 Warrenton
503-325-5722

RE/MAX River & Sea

ASTORIA GRANITE WORKS
QUALITY STONE WORK SINCE 1917
423 GATEWAY AVE. • ASTORIA | 503-325-0761

Home Furnishings
1033 Commercial Street Astoria, Oregon 97103
(503) 325-5620

Premium ADJUSTABLE BEDS
ASTORIA • 503-325-1974

TERRY'S PLUMBING
Commercial & Residential 503-325-5180

J ELECTRIC SERVICE
Quality Work at Affordable Rates
503-739-7145
712 S. Holladay Seaside, Oregon
www.jelectric.com

Morgan Civil Engineering
PO Box 358 • Manzanita
503-368-6186

Thank you for supporting **Newspapers In Education**

- Bridgewater Bistro
- Chinook Marine Repair Shop
- Randall Lees Flooring America
- Red Dwarf Graphx
- Seaside Visitors Bureau

TLC Fibre Federal CREDIT UNION
85 W Marine Dr Astoria
2315 N Roosevelt Dr Seaside
1771 SE Ensign Ln Warrenton
www.tlfcu.org • 503.842.7523

Thankyou Teri Carpenter

QUACKENBUSH BUILDERS, INC.
Quality Construction from Design to Finish
503-440-2827

NORTHWEST READY MIX
950 Olney Ave • Astoria
503-325-3562

North Coast HOME CARE
Home Oxygen • Medical Equipment
2230 EXCHANGE ST. | ASTORIA | 503-325-9906

THE HOME DEPOT
1650 SE Ensign Lane WARRENTON
503-861-9999