

TOMORROW'S HOROSCOPE

WEDNESDAY, APRIL 22, 2020



ARIES (March 21-April 19).

Don't be too quick to align with the common opinion. It's often reductive. One person's weed is another person's gourmet salad or the star of their Pinterest-worthy bouquet.

TAURUS (April 20-May 20). You will receive transmissions on an energetic level. You'll think of someone and then cross paths, or you'll have an idea and then be contacted by just the person to help.

GEMINI (May 21-June 21). When you get into a relationship, you hope it will lead to a more expansive life, not a more constrained one. This was once your subtle wish, and now it's a conscious criteria.

CANCER (June 22-July 22). Give your reality a good shake. Imagine what your life would be like without the current content. Imagine a different home, work and relationship, and you'll appreciate what you have. Or you'll see where things could change.

LEO (July 23-Aug. 22). You may have a plan, but don't worry if you veer off. It just wasn't Velcro enough to keep your creative spirit fixed to it. You will thrive in the in-between moments of unstructured time.

VIRGO (Aug. 23-Sept. 22). You'll connect with your tribe, essentially having the same experience as your ancestors did 20,000 years ago when they sat around a fire and shared stories and dances under the stars.

LIBRA (Sept. 23-Oct. 23). You may hear yourself paying lip service to an idea that your heart is not totally backing up. Your awareness of this conflict is most fortuitous. Work it out. Save yourself from fully committing to a bad fit.

SCORPIO (Oct. 24-Nov. 21). In his poem "Truth is the Person Who is There" Geoff Bouvier suggests, "The sky meets the mountain with no further obligation." You'll be the sky. You'll be the mountain. Both are grateful positions.

SAGITTARIUS (Nov. 22-Dec. 21). You'll be negotiating in some way. It may feel uncomfortable to ask for what you really want, but it's important to do it anyway. Definitely don't cave to the other person's stance. Meet in the middle.

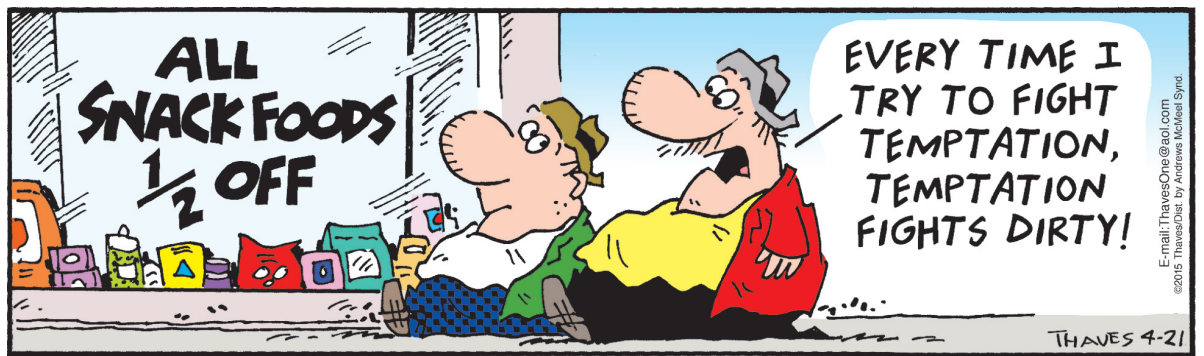
CAPRICORN (Dec. 22-Jan. 19). You're in a circumstance that's very much like a game and yet there are at least 20 more important things than winning at stake. Top three: the people you get to meet, the honing of skills and team spirit.

AQUARIUS (Jan. 20-Feb. 18). Like a shaman, you will have your foot in two different worlds today, forming a bridge between those who would otherwise find it very difficult to communicate. You'll carry messages from one side to the other.

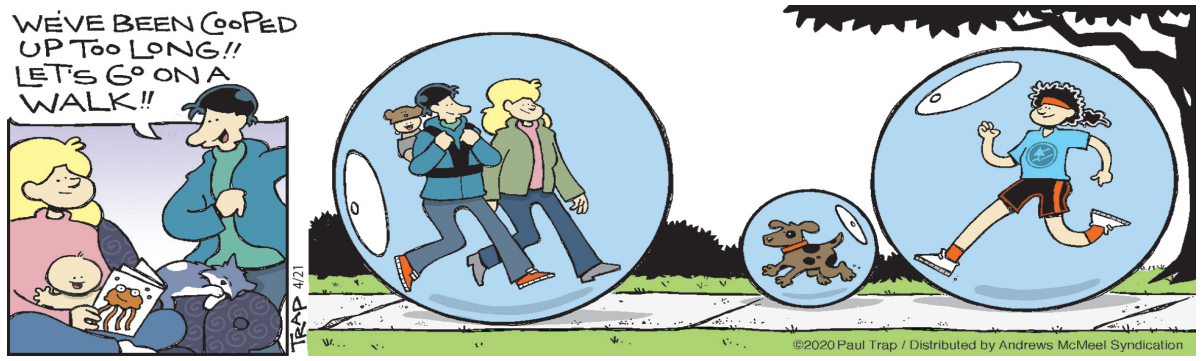
PISCES (Feb. 19-March 20). Everyone prefers environments where they feel large and in charge. Going where you know you'll be out of your element — whether it's an actual place, relationship or other realm — takes guts. You have guts.

WEDNESDAY'S BIRTHDAY (April 22). Your cosmic birthday gift includes a bundle of transcendent moments. You define yourself in new and unique ways, claiming a path that's all your own. From matters of spirituality to relationships, you are recognizing your own needs and customizing approaches and systems that bring precisely the experience you crave. Aquarius and Libra adore you. Your lucky numbers are: 7, 40, 28, 13 and 9.

FRANK AND ERNEST



THATABABY



PHOEBE AND HER UNICORN



LOLA



SIX CHIX



MUTTS



BABY BLUES



ZITS



ACROSS

1 Zealous group
5 Observe
8 Crop-growing tract
12 Culture medium
13 Web address
14 "Super-food" berry
15 Too
16 Protective glass cases
18 Blockhead
20 Tolerates
21 Jug handles
23 Sault — Marie
24 Prison roomie
28 "So be it"
31 Glamorous Gardner
32 Amtrak express
34 — -de-France
35 Gambling mecca
37 Revealing
39 French vineyard

41 Teeming
42 "Good grief!"
45 Bamboo eaters
49 Good health
51 Prescribed amount
52 Big fusses
53 "Exodus" hero
54 Oil cartel
55 Memory unit
56 Insult, slangily
57 Tidy

DOWN

1 "Misery" star James
2 Hybrid fruit
3 Endure
4 Mason's tool
5 Take away
6 Before
7 Jazzy Fitzgerald
8 Tex-Mex treat
9 College life
10 Scarce
11 Overlook
17 Ton fractions (Abbr.)
19 "— Rock"
22 Take the wheel
24 Train unit
25 Prior night
26 Guinevere's lover
27 Omission indication
29 Right angle
30 Formerly called
33 — Romeo
36 End of a threat
38 Muscle connector
40 SEAL's org.
42 Clear the decks?
43 Screen star Lamarr
44 Lettuce unit
46 Block-head
47 On the briny
48 Denomination
50 Lanka lead-in

Solution time: 21 mins.

A	L	T	O	S	C	L	E	V	E	R		
F	L	O	R	E	T	H	U	M	E	R	I	
A	G	L	A	R	E	A	C	O	R	N	S	
B	A	L	M	E	P	I	C	B	E	E		
			P	E	R	U	I	N	A			
A	M	A	V	I	P	S	I	T	E	M		
G	A	R	D	E	N	P	A	R	T	I	E	S
T	R	I	O	G	I	V	E	M	E	N		
			Z	O	E	E	A	S	Y			
S	N	O	A	S	S	N	U	P	D	O		
P	I	N	A	T	A	N	A	M	E	I	T	
O	K	A	P	I	S	A	R	M	L	E	T	
T	E	N	O	N	S	H	A	Y	E	S		

Saturday's answer 4-20

JANRIC CLASSIC SUDOKU

Fill in the blank cells using numbers 1 to 9. Each number can appear only once in each row, column and 3x3 block. Use logic and process elimination to solve the puzzle. The difficulty level ranges from Bronze (easiest) to Silver to Gold (hardest).

Rating: BRONZE

Solution to 4/18/20

5	1			7	6				
9			8	5					
	6	4		8	7				
	3	7	4	8				9	
		9	1						
6		2	7		4	1			
4		6		9	7				
		5	3					2	
	2	7			8	6			

© 2020 Janric Enterprises Dist. by creators.com

JANRIC CLASSIC SUDOKU

Fill in the blank cells using numbers 1 to 9. Each number can appear only once in each row, column and 3x3 block. Use logic and process elimination to solve the puzzle. The difficulty level ranges from Bronze (easiest) to Silver to Gold (hardest).

Rating: BRONZE

Solution to 4/18/20

1	2	9	6	4	3	7	5	8
4	7	5	8	2	1	9	6	3
3	6	8	5	9	7	4	2	1
8	5	4	2	1	9	3	7	6
6	1	2	3	7	8	5	9	4
7	9	3	4	5	6	1	8	2
9	4	1	7	6	2	8	3	5
5	8	6	9	3	4	2	1	7
2	3	7	1	8	5	6	4	9

© 2020 Janric Enterprises Dist. by creators.com