

MUSIC HAPPENINGS

Thursday, January 30

Sugar Thistles

6 p.m. The Bistro, 263 N. Hemlock, Cannon Beach. thebistrocannonbeach.com or 503-436-2661. Zoe and Dmitri Swain play original acoustic folk, country, and Americana music.

Jam Session

6:30 p.m. 1111 Exchange St., Astoria, OR 97103. astoriaseniorcenter.org. Bring an instrument and jam.

Folksongs of the Great American Railroad

7 p.m. 1131 Broadway Street, Seaside. folksinging.org. Folksinger, storyteller and autoharp virtuoso Adam Miller presents a free sing-along concert.

The Lonely: Celebrating Roy Orbison

7 p.m. Raymond Theatre, 323-1/2 3rd St., Raymond, WA. sundayafternoonlive.org or 360-942-4127. Seats are \$25 the night of the show. The show will be in tribute to Roy Orbison.

Open Mic Thursdays

7 p.m. Crown Alley Irish Pub, 21712 Pacific Way, Ocean Park, WA. crownalleyirishpub.com or 360-777-3716. Bring your instrument and perform.

Pretty Gritty

8 p.m. Pickled Fish, 409 Sid Snyder Drive, Long Beach, WA. pickledfishrestaurant.com or 360-642-2311. Blaine Heinonen and Sarah Wolff perform a mix of country, rock, blues and soul.

Friday, January 31

Hammer Dulcimer Concert

3 p.m. Hoffman Center for the Arts, 594 Laneda Ave., Manzanita. 503-368-3846. Mick Doherty performs hammer dulcimer, guitar, string bass, accordions, percussion and various sound effects devices.

Wes Warmund

6 p.m. The Bistro, 263 N. Hemlock, Cannon Beach. thebistrocannonbeach.com or 503-436-2661. Wes Warmund plays his instrumental guitar.

45th Parallel Universe Orchestra: Smorgasbord

7 p.m. Liberty Theatre, 1203 Commercial St., Astoria. libertyastoria.org or 503-325-9522. \$30. Experience Scandinavian folk music.

The Jessie Leigh Band

8 p.m. Manzanita Lighthouse, 36480 US-101, Nehalem. manzanitalighthouse.com or 503-368-4990. Jessie performs country music.

There Is No Mountain?

9 p.m. Pickled Fish, 409 Sid Snyder Drive, Long Beach, WA. pickledfishrestaurant.com or 360-642-2311. Husband and wife Kali and Matt play "pop with a short attention span."

Saturday, February 1

Celtic and Maritime Music With Curlew's Call

7 p.m. Peninsula Arts Center, 504 Pacific Ave. N., Long Beach, WA. peninsulaartscenter.org/concerts or 360-901-0962. \$15. Curlew's Call performs Celtic/Irish and maritime songs.

The Music Butchers

7 p.m. WineKraft Wine Bar, 80 10th St., Astoria. winekraftpnw.com or 503-468-0206. Folk originals and faves on guitar harmonica and Cajon.

Famous Lucy

7 p.m. Wild Grocery, 298 Laneda Ave., Manzanita. facebook.com/WildManzanita or 503-368-5316. Megan Trenary and George Yoder perform western soul.

The Blank Tapes

8 p.m. Sou'Wester Lodge, 728 J Place, Seaview, WA. souwesterlodge.com or 360-642-2542. The Blank Tapes performs "1960s-inspired folk-rock-surf-psych-soul-pop."

Sunday, February 2

Kitchen Music

1 p.m. Long Beach Grange, 5715 Sandridge Rd., Long Beach, WA. 360-642-4953. Bring an instrument for traditional bluegrass, folk, blues, country and pop. *Repeats on the first and third Sunday each month.

Just Us Four

3 p.m. Astoria Moose Lodge 408, 420 17th St. astoria.mooselodge.org/location/408-astoria or 503-325-0881. Just Us Four performs a one-hour set of rock, country and bluegrass, followed by an open mic.

Monday, February 3

Burgers and Jammin'

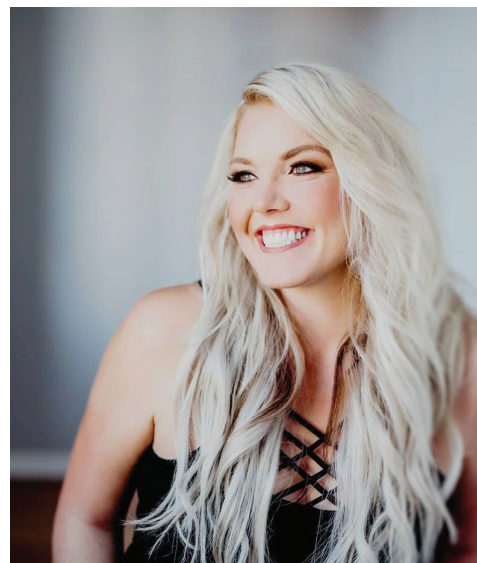
6 p.m. American Legion Cannon Beach Post 168, 1216 S Hemlock St., Cannon Beach. cannonbeachpost168.org or 503-436-2973. Enjoy burgers and live music.

Q Choir

7 p.m. Liberty Theatre, 1203 Commercial St., Astoria. lowercolumbiaqcenter.org. Rehearsals are



The Blank Tapes.



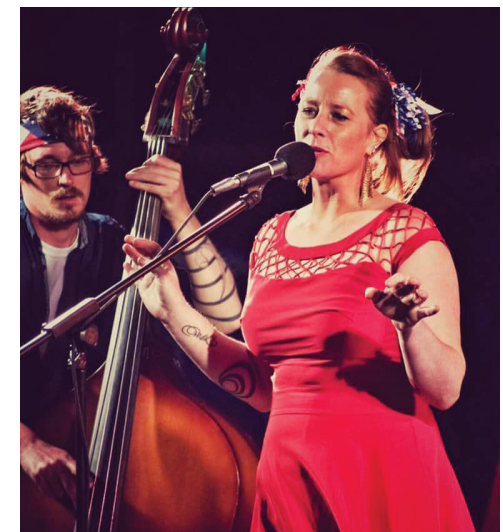
Jessie Leigh.

held every Monday. All are welcome.

Tuesday, February 4

Thistle & Rose

6 p.m. The Bistro, 263 N. Hemlock, Cannon Beach. thebistrocannonbeach.com or 503-436-2661. Thistle & Rose is a mix of soft folk ballad, contemporary Americana, 60's-to-80's pop-rock, and some hot-lick blues.



Famous Lucy.

Wednesday, February 5

Pretty Gritty

8 p.m. Pickled Fish, 409 Sid Snyder Drive, Long Beach, Wash. pickledfishrestaurant.com or 360-642-2311. No cover.

Thursday, February 6

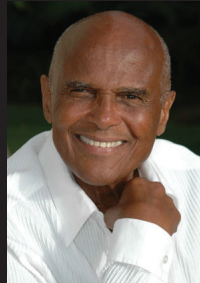
Jam Session

6:30 p.m. 1111 Exchange St., Astoria, OR 97103. astoriaseniorcenter.org. Bring an instrument and jam.

LIBERTY[®]
THEATRE
ASTORIA OREGON

1203 Commercial St.
Astoria, OR 97103

libertyastoria.org
503-325-5322 Ext 55



FILM:
"HARRY BELAFONTE:
SING YOUR SONG"

Sunday, January 19th
\$10 Admission
2:00pm



45th PARALLEL
UNIVERSE ORCHESTRA

Smörgåsbord
Friday, January 31st
7:00pm