

Continued from Page 4

Media Art Movement/ Rise of the Tradigitalists." This evolving New-Age art form is rapidly gaining acceptance from traditional artists. Both artists will meet with art walk guests to discuss the genre.

Seaside Yarn and Fiber, 10A N. Holladay Drive

Featuring an eclectic mix of hand-dyed yarn, macramé and décor items that fill every nook and cranny. Plan to take time to poke through the assortment of items and visit with the owner, who is choke full of information on the art of fiber.

The Whet Spot, 12 N. Holladay Drive

Combining the best of two worlds, art with craft beers, ciders and wines. Cutting edge art covers the walls including a fine collection of hand-made fused glass tiles and on the window sill an ever-changing series of painted rocks.

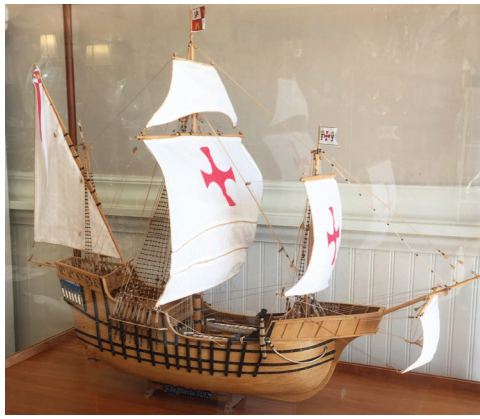
Angi D Wildt Gallery, 737 Broadway St., #2

Featuring mixed media monotypes by Bend artist Michelle Lindbloom. "My approach is intuitive. It is a visual playground of colors, textures, shapes and movement. My imagery portrays continuous dialogues with my psyche along with my awareness of everyday experiences."

Westport Winery, 810 Broadway St.

Featuring artist Teresa Weisman-Knight who in addition to creating whimsical and functional works in photography has also traveled across the Americas to the Antarctic and Arctic Oceans. Meet the artist in the winery.

Blue Bond Art Studio and Gallery, 417 S. Holladay Drive



'Santa Maria 1492' model at Pacific Heirloom Art and Collectables.

Fully rooted in the West, find original art, mostly oil work, by Blue Bond, who is a sought after Seaside artist by collectors from all over the country.

Starry Night Art Hotel and Inn, 811 First Ave.

Featuring new art from Judy Haas, an Oregon artist working in acrylics, watercolors and mixed media. Originals mostly small enough to fit in guest's luggage and extremely affordable in a style that feels like sophisticated folk art.

Find additional original art during the day at: Seaside Coffee House, 3 N. Holladay Drive; Seaside Antique Mall, 726 Broadway St., Dough Dough Bakery, 8 N Holladay Drive and Westport Winery, 810 Broadway St.



'Judy in the Winter' acrylic by Judy Haas at Starry Night Art Hotel.

ERIC WIEGARDT
AWS-DE, NWS

WATERCOLOR CLASS
6 SESSIONS STARTING OCT. 29TH
CALL FOR INFO & TO REGISTER: 360.665.5976

2607 Bay Ave. Ocean Park, WA - www.ericwiegardt.com

See. Go. Do.

The Arts • Music • Museums • Classes • Film
News • Blogs • Dining • & More

weekend

Winnifred Byrne
LUMINARI ART




- Art Cards
- Jewelry
- Stationary
- Ceramics

1133 Commercial Street
Astoria, OR 97103 503.468.0308

Winnifred Byrne
LUMINARI ARTS

Art Cards
Stationary
Jewelry
Ceramics

1133 Commercial Street
Astoria, OR 97103
503.468.0308



marie POWELL
GALLERY

ORIGINAL FINE ART
on the waterfront
port of ilwaco, wa
marie-powell.com
360-244-0800

"Lilies and Cupcake", mixed media