

Gearhart FIRST SATURDAY

ART WALK

Oct.
5
2 to 5 p.m.

GEARHART — October's First Saturday Art Walk takes place from 2-5 p.m. Saturday, Oct. 5. Wander through town and enjoy refreshments and art from participating merchants.

**A Great Gallery – 576 Pacific Way — 503-709-2840 –
agreatgallery.com**

'Tis the season for sunflowers, pumpkins and the rich colors of fall. Lots of new fall items in the gallery just in time to start your holiday shopping. Refreshments and chocolate will be served.

**The Natural Nook – 738 Pacific Way - 503-738-5332
— naturalnook65@gmail.com**

We represent more than 20 talented local consignment artists year-round. Stop in to see their latest endeavors.

**Trails End Art Association – 656 "A" Street – 503-
717-9458 — trailsendart.org**

Trail's End Gallery will open a new show featuring member artists from the association's Wednesday Watercolor Open Studio group.

Artist Sue Bish has been active in art and theatre for many decades, and belongs to the Watercolor Society of Oregon. She says, "... I still am and will always be a student. The learning process never stops and is an essential part of the evolving artist. It takes courage to plunge ahead, and I hope my art

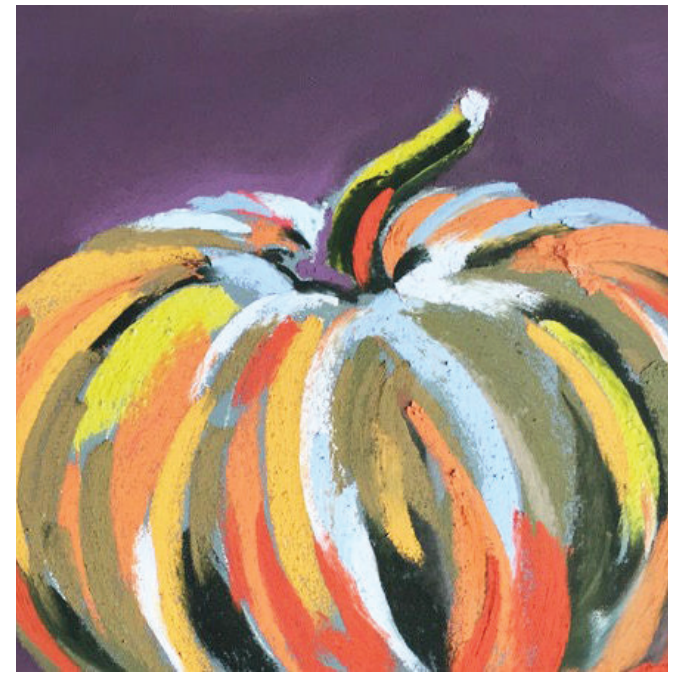


'Rainy Day' by Gheri Fouts at Trail's End Art Association.

reflects all of life's experiences."

Painter Linda Gebhart has entered many shows and most recently took two ribbons at the Trail's End Annual Judged Show. Gebhart loves painting small seascapes, architecture and landscapes. She recycles materials for matting and framing and uses her own travels and beach walks as subjects but welcomes photos from friends to continue honing her skills.

Award-winning watercolorist Gheri Fouts travels worldwide to hone her skills. She has taught beginning watercolor classes and is always learning through the challenging and changing nature of watercolors.





'Nutmeg' by Susan Thomas at A Great Gallery.

Color, challenge, unpredictability and emotion all fascinate artist Jane McGeehan. Her images reflect the beauty and wonder of the natural world, some impressionistic and others more fanciful.

Watercolor artist Linda Wyss is finding much success after taking her first lessons through Trail's End and being mentored by the group.

Artist Mary Ann Gantenbein has an innovative style and has learned from some of the best artists along the coast such as Eric Weigardt, Judith Fredrikson and Jo Pomeroy-Crockett. She recently took a first prize in Trail's End Annual Judged Show.

ASSISTANCE LEAGUE® 

THE COLUMBIA PACIFIC

Presents the 12th Annual assistance league

HOME CHIEF TOUR

GEARHART - OCEAN VIEWS

TICKETS \$30

DAY OF \$35

SATURDAY • OCTOBER 12TH • 2019 11AM-3PM

Tickets Available at:

**HOLLY McHONE JEWELERS • ASTORIA/THE SWEET SHOP • GEARHART
OR ONLINE AT WWW.ASSISTANCELEAGUECP.ORG**

HOMES ON TOUR	SPONSORS	RESTAURANT	FLORIST
Goodman/Garvey	AUTIO Co./England Marine	Thai Me Up	Erickson's
Hoffman/Trullinger	Miller/Keizer	Maggie's on the Prom	Bloomin Crazy
Cowles	Lum's	The Sweet Shop	Erickson's
Marino	TOTEM Properties	Pacific Way Cafe	Bloomin Crazy
Warren	US Bank	Finn's Fish House	Natural Nook
Natural Nook	Bigby's Tree Service	Dough Dough Bakery	Natural Nook

Proceeds benefit the 2019/20 "Operations School Bell" program that will provide clothing to over 700 Clatsop County Children.
FOR MORE INFO GOTO WWW.ASSISTANCELEAGUECP.ORG OR CALL 503.791.2879

Post 99 American Legion Auxiliary will be hosting a trip to:
**Chinook Winds Casino
Lincoln City
Saturday,
October 12, 2019**

Bus departs from the Seaside Legion Hall @ 8:30 and comes back @ 4:30pm

Enjoy the luxury of a motor coach ride among friends. A perfect day rain or shine.

Your \$30.00 ticket price includes \$10.00 slot play.

Don't Gamble? Enjoy one of the 5 restaurants with a \$3.00 off coupon.

**Reservations Required
Call Bev 503-717-2265**

**Gather a group and
join us for a fun day!**

