

Kid Scoop® .COM

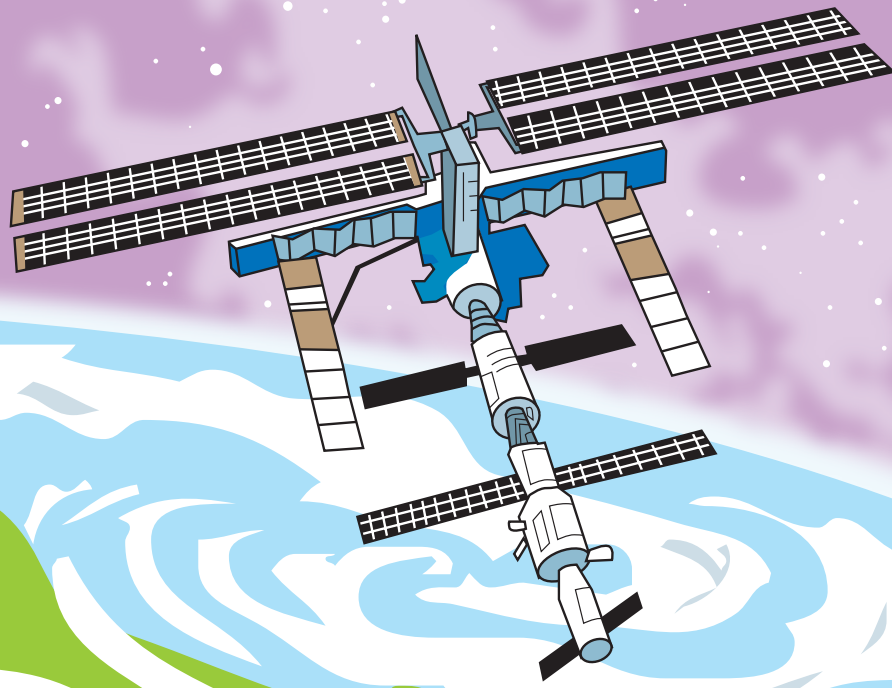
THE AWARD-WINNING PRINT & ONLINE FAMILY FEATURE
 Find Kid Scoop on Facebook
 © 2019 by Vicki Whiting, Editor Jeff Schinkel, Graphics Vol. 35, No. 34

Living in Space: International Space Station

WHO In 1984, the United States invited countries around the world to build an international space station. Now, with the participation of 18 countries, it has truly become a global cooperation project.

The flags below represent the 18 countries participating in the International Space Station project. Unscramble the letters to discover the name of each country.

- | | |
|--|---|
|  SIRUAS |  YITLA |
|  DACNAA |  ASPIN |
|  PANAJ |  DANSHERNETL |
|  ZIBLAR |  DEWSNE |
|  GUBLIME |  OTSUH AKREO |
|  MADRENK |  ZSKAKAHTNS |
|  RAFENC |  SUTHO FIACAR |
|  ERNYMAG |  TIEDNU GIDKNMO |
|  LSAMIAYA |  DETNUI TESTSA |



WHAT When completed in 2010, the ISS was longer than an American football field, has a living and working space the size of a 747 jumbo-jet, and is able to house up to seven astronauts.

How does it get electricity? Hold this sentence up to a mirror:

!solat panels collect solar power

Standards Link: Spelling: Spell grade-level appropriate words correctly. Economics: Students understand the effect that increasing international interdependence may have on countries.

WHEN When did the United States invite other countries to join in the building of the ISS?

When was it completed?

The answers can be found on this page.

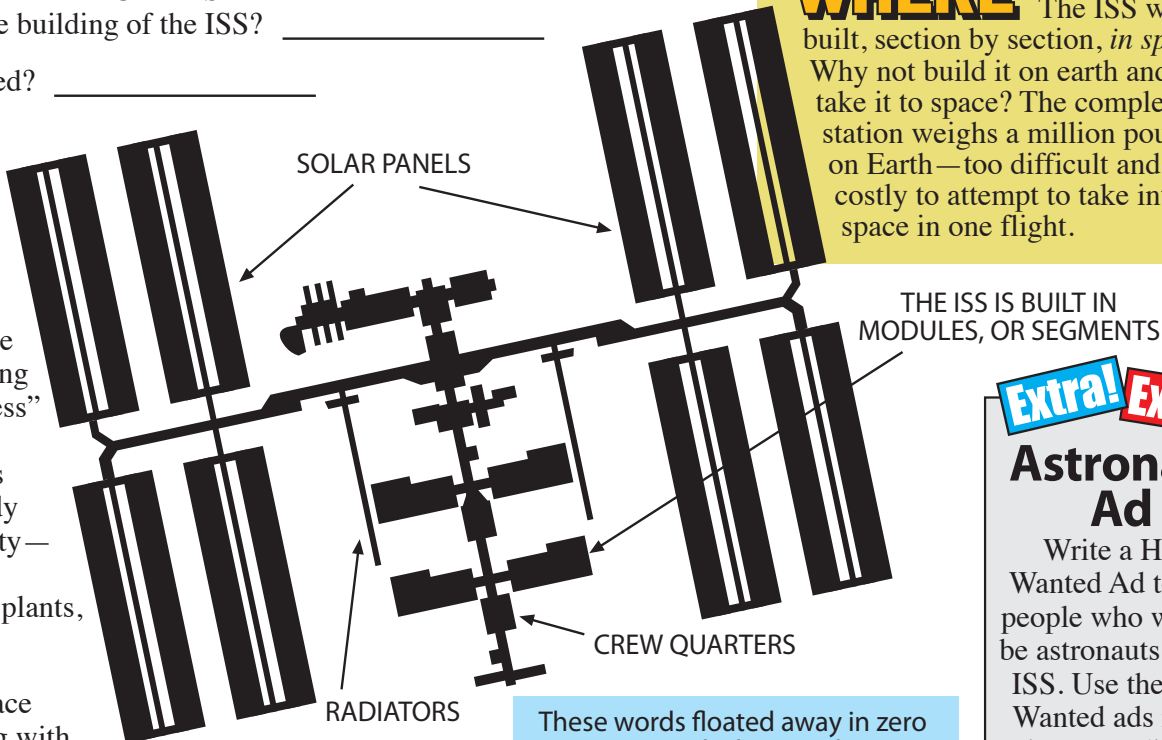
WHY

The space station _____ humans to live and _____ for long periods in a "weightless" _____. The space station provides an opportunity to study a world without gravity—and better understand gravity's _____ on plants, animals, and humans.

Lessons from past space travel show that living with little or no gravity _____ bones and muscles. The space station allows scientists to understand these effects and find _____ for long-term space travel.

Standards Link: Science: Know ways in which technology has increased our understanding of the universe.

WHERE The ISS was built, section by section, *in space*. Why not build it on earth and then take it to space? The completed station weighs a million pounds on Earth—too difficult and costly to attempt to take into space in one flight.



These words floated away in zero gravity! Find where each one belongs.

STUDY **WEAKENS** **SOLUTIONS**
ALLOWS **EFFECTS** **ENVIRONMENT**

Extra! Extra! Astronaut Ad

Write a Help Wanted Ad to find people who want to be astronauts on the ISS. Use the Help Wanted ads in the print or e-edition of your newspaper as examples.

Standards Link: Writing Applications: Write brief expository descriptions.

Kid Scoop® Puzzler

Space Milestones

In which year did each of these events happen? Do the math to find out!

Astronaut Neil Armstrong walks on the moon.
 $1 \quad 9 \quad \underline{\quad}$
 (21 X 3) + 6

U.S. sends four monkeys into the stratosphere.
 $1 \quad 9 \quad \underline{\quad}$
 (25 X 2) + 1

U.S.S.R. launches Sputnik 1 satellite into space.
 $1 \quad 9 \quad \underline{\quad}$
 (25 X 2) + 7

John Glenn becomes first American to orbit the earth.
 $1 \quad 9 \quad \underline{\quad}$
 (15 X 4) + 2

Standards Link: Number Sense: Use multiplication and addition to solve problems.

Double Double Word Search

ASTRONAUTS Find the words in the puzzle. How many of them can you find on this page?

- SPACE
- STATION
- GRAVITY
- GLOBAL
- INVITE
- SOLAR
- WEAKENS
- WEIGH
- FLAGS
- LONG
- EARTH
- NEIL
- JET



Standards Link: Letter sequencing. Recognized identical words. Skim and scan reading. Recall spelling patterns.

FROM THE Kid Scoop® LESSON LIBRARY

Average Age

Find 10 ages mentioned in the news. (For example: *Senator Smith, age 54*) Add them. Find the average age by dividing the total by 10. **Challenge:** Find the **mean** and the **mode**.

Standards Link: Data Analysis: Find the average, mean and mode.

What kind of songs do planets like to sing?

ANSWER: Nep-tunes.

Thanks to the following businesses for supporting **Newspapers In Education**


- Astoria Granite Works
- Beach Books
- Bridgewater Bistro
- Clatsop Behavioral Healthcare
- Clatsop County Fair
- El Catrin Mexican Restaurant
- Elements by the Sea
- Fibre Federal Credit Union
- Hampton Lumber Mills
- Hees Enterprises Inc.
- JJ Electric Service
- Jonathon's LTD
- Laser Print & Copy
- Lower Columbia River Chief Petty Officer Association
- Moberg & Rust, Attorneys at Law
- North Coast Home Care
- Premium Adjustable Beds
- Quackenbush Builders Inc.
- S&F Land Service
- Survey Technologies
- Terry's Plumbing
- U Street Pub and Eatery

TEAM work makes the dream work
TEAM
 Total Employment And Management
 3447 HWY 101 N Gearhart, OR (503)325-2553

Columbia Veterinary Hospital
 576 31st Street • Astoria
 503-325-2250

The Garibaldi Museum
 Maritime History
 112 Garibaldi Ave
 Garibaldi, Ore.
 (503) 322-8411

Astoria Forest Products, LLC
 10 Pier 1 • Suite 301
 Astoria, Oregon 97103

Astoria, Warrenton & Seaside
 1100 Northwest Ridge Road
 Hammond, OR 97121
 reservations 800-562-8506
 info 503-861-2606


Northwest West Inc.
 Income Tax Preparation
 762 Avenue G • Seaside, OR 97138
 503-738-3480

Tires LES SCHWAB
McCALL TIRE CENTER
 WARRENTON 861-3252
 1167 SE Marlin
 SEASIDE 738-8243
 2155 S. Roosevelt

Morgan Civil Engineering
 PO Box 358 • Manzanita
 503-368-6186

Classic AND TOWING
 503.325.0411
 34747 Hwy 101 Bus.
 ASTORIA

LEWIS & CLARK
 TIMBERLANDS™
 MANAGED BY
 GREENWOOD RESOURCES*

RE/MAX
 River & Sea

Teerin Bros. LAND & TIMBER
 ASTORIA | 503-556-0410


 503-325-8221
Emerald Heights
 APARTMENTS

NORTHWEST READY MIX
 950 Olney Ave • Astoria
 503-325-3562

STREET FOURTEEN CAFE
 1410 COMMERCIAL STREET
 ASTORIA
 503-325-5511

Great Ocean
 Da Yang Seafoods LTD.
DA YANG

La Cabana D Raya
 MEXICAN RESTAURANT
 35431 HWY 101 BUS • ASTORIA • 503-325-3656

325 Marlin Avenue
 WARRENTON
 503-861-1621
Bayshore Animal Hospital

WORKSOURCE ASTORIA
 NORTHWEST OREGON EMPLOYMENT DEPT.
 450 MARINE DR ASTORIA 503-325-4821

Home Furnishings
 1033 Commercial Street
 Astoria, Oregon 97103
 (503) 325-5620

COLUMBIA RIVER BAR PILOTS
 Providing safe passage since 1846

Certified **ZENTANGLE** Teacher
 Sandi Kelley
 106 3rd St.
 ASTORIA
 503.440.9788