

FESTIVAL ENTERTAINMENT

ASTORIA NORDIC PARK UPDATE

Astoria Nordic Heritage Park will honor the immigrant tradition that brought thousands of Nordic immigrants to Oregon's North Coast in the late 1800s and early 1900s. It will be a public space to make locals and visitors alike aware of the ethnic heritage that contributed immensely to the fabric of our community. It will honor families that said their last good-byes in Northern Europe and moved to Astoria to become Americans. Park Committee Chair and Astoria Scandinavian Heritage Association Vice-President Judi Lampi will describe the fantastic design for the park created by The West Studio of Seattle, Wash., and detail the timeline and progress of the efforts to raise \$1 million to pay for its construction. Hear Lampi's talk Saturday at 10 a.m. in Exhibit Hall; 1 and 3 p.m. at the Dairy Barn/Event Center and at 11:30 a.m. Sunday in Exhibit Hall.

ASTOR STREET OPRY – "SHANGHAIED IN ASTORIA"

Now in its 35th season, "Shanghaied in Astoria" is part-vaudeville, part-soap opera and part 1950s style Hollywood musical, all combined into a fun and entertaining look at traditional, local cultural folklore, including immigrant cannery workers from Scandinavia. What originated as a celebration of Astoria tradition has become a tradition itself. Catch "Shanghaied" cast members performing their olio acts at 1, 3 and 5 p.m. Saturday in the Beer Garden.

FRANK ELD: FINNISH LOG CONSTRUCTION – THE ART

Finlandia Foundation Lecturer of the Year Frank Eld is the son of a Finnish immigrant carpenter and loves the lost art of Finnish log cabin construction. Through visuals and live demonstration, Frank will educate and encourage the preservation of these tangible symbols of Finnish Culture, like the historic Lindgren Cabin at Cullaby Lake. Eld's appearance at the 2019 festival is sponsored by Finnish Brotherhood and Finlandia Foundation's Columbia-Pacific Chapter. Eld will be at Exhibit Hall at 2:15 p.m. Saturday and 12:30 p.m. Sunday.



Icelandic horses.

ICELANDIC HORSES – JACKIE & LARRY TAYLOR

Jackie and Larry Taylor of Yelm, Wash., will show their Icelandic horses in the horse arena in the low building next to the Midsummer Pole. Icelandic horses are a pure breed that developed in Iceland. The horses are mostly pony-sized but are still called horses. They are short backed and can carry a 225-pound man. They are hardy, have unusual gaits and live long lives. Jackie and Larry will provide demonstrations of these attractive animals and let you see them up close. The Taylor's will be in the Horse Arena at Noon Friday and 9 a.m. Saturday and Sunday.

LEIKARRINGEN OF PORTLAND DANCERS

"Leikarringen" means circle or round dance. The priority of this Portland group is the preservation of Nordic culture. Leikarringen likes to perform outdoors if the weather is nice. Look for them in front of the main entrance on Saturday. Performances are Saturday at 11:45 a.m. in the Arena and at 1:15 p.m. in Exhibit Hall.



Harald Haugaard/Helene Blum Band.

FEATURED ENTERTAINERS FROM SCANDINAVIA

HARALD HAUGAARD / HELENE BLUM BAND from DENMARK

The Harald Haugaard and Helene Blum Band recently celebrated 10 years together with a sold-out Northern European tour and are now in North America again sharing their updated traditional and original music with festival audiences. Band members include Kirstine Elise Pedersen on cello, Mikkel Grue on guitar and Sune Rahbek on percussion. The band plays in the Arena at 6 p.m. Friday; 12:45, 2:30 and 4:30 p.m. Saturday; and 11 a.m. and 1:45 p.m. Sunday.

BJØRN AND OLE FROM NORWAY

Combining fiddle and accordion in folk music has long been a tradition in Norway. Bjørn Kåre Odde and Ole Nilssen have strong skills on their respective instruments and know the traditions well, but their music together is innovative and imaginative and pushes tradition to the



Runhild Heggem

Bjorn and Ole.

boundaries. These young musicians have a light, playful and dynamic interaction that appeals to dancers and concert audiences equally. Enjoy listening to updated traditional and original tunes by some of Norway's finest new and upcoming musicians. The duo plays in the arena 5 p.m. Friday; 10:45 a.m., 3:30 and 5:30 p.m. Saturday; and 10 a.m. and 12:45 p.m. Sunday.



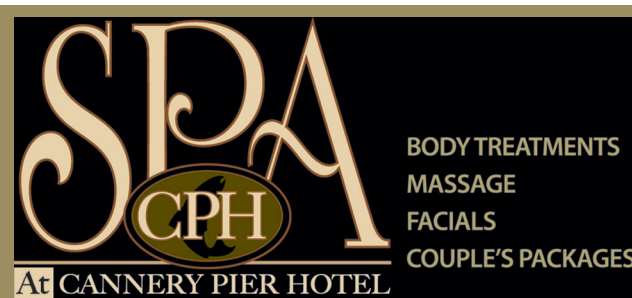
Breakfast, Lunch & Dinner
Banquets • Meetings • Rehearsal Dinners • Weddings •
Gift Shop

**Locals favorite stop
to & from Portland!**

42362 Highway 26
Elsie, Oregon
503.755.1818

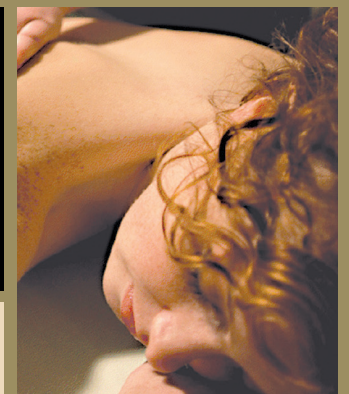
LOCATED ON HWY
26, 60 MILES FROM
PORTLAND, 22 MILES
FROM SEASIDE

www.camp18restaurant.com



Authentic Finnish Sauna • Gift Certificates Always Available
Mineral Therapy Hot Tub • Open to the public 7 days a week

No. 10 Basin St. • 503-338-4772 • www.cannerypierhotel.com • 10-6 Daily



BODY TREATMENTS
MASSAGE
FACIALS
COUPLE'S PACKAGES

At CANNERY PIER HOTEL