

DAY AFTER TOMORROW'S HOROSCOPE

SATURDAY, JUNE 8, 2019



ARIES (March 21-April 19). You don't require your friends to think just like you do, but you do want principled people around you who have values that are at least in the same ballpark as yours. You have to be in the same ballpark to play together!

TAURUS (April 20-May 20). When you want someone's attention and aren't getting it, that can be bothersome. Change the channel in your head fast, before it turns into a bigger deal than it needs to be.

GEMINI (May 21-June 21). The laughter you share is no small thing. There's so much that goes into a laugh. It's an alignment of spirit at the very least and could represent a multitude of shared experiences and thoughts.

CANCER (June 22-July 22). Investors use their instincts about finance in order to distinguish the profitable investments from the poor ones. Much more will be at stake in investments of the heart. Turn up those instincts regarding the character of people.

LEO (July 23-Aug. 22). Just as physical wounds need cleaning and tending to get the best possible chance at healing well, emotional wounds need to be handled. Don't do the emotional equivalent of slapping a bandage over a dirty wound.

VIRGO (Aug. 23-Sept. 22). The fast talkers may not be saying what you need to or want to hear. The speed of their verbiage may be meant to distract you from the lack of real communication between you.

LIBRA (Sept. 23-Oct. 23). Sometimes being who you want to be is automatic. Then there are days like this. It's harder. It takes restraint. In fact, your personality is as defined by what you wouldn't do as it is by your choices and actions.

SCORPIO (Oct. 24-Nov. 21). When you don't understand, you'll ask good, honest questions. The bottom line is that anyone who dismisses, deflects or distracts you from your line of questioning is hiding.

SAGITTARIUS (Nov. 22-Dec. 21). It's easy enough to look on the bright side in the daytime. At night, the bright side is all the way on the other side of the world. And anyway, you have to see the dark with the light to get an accurate picture.

CAPRICORN (Dec. 22-Jan. 19). Getting along with people is the skill that will apply across the board in every area of your life. Even when you're alone in your own space, getting along helps the you-to-you relationship go smoothly.

AQUARIUS (Jan. 20-Feb. 18). Friends will call you in need of emotional support. Support has many forms. It can be just listening. It can be physical, like a pat on the back or a hug. It can be a moment of care, as in sharing food or lending a hand.

PISCES (Feb. 19-March 20). You're not working for feedback, but the comments do matter. They tell you whether or not you're creating your desired effect. So be willing to hear from the crowd, knowing you'll have to sort the valuable information from the rabble.

SATURDAY'S BIRTHDAY (June 8). You're living toward ideas that serve and uplift. There's just no time left over for the sort of drama you used to know. Things like love triangles, disharmony and litigation may work on television but not in real life. You're incredibly fortunate in July. You'll invest and reinvest in business. Promises, deals and love in August. Leo and Libra adore you. Your lucky numbers are: 2, 20, 10, 40 and 1.

ACROSS

1 Satan's purchase
5 Chest protector
8 Ski lift type
12 Old U.S. gas brand
13 Piercing tool
14 Hindu royal
15 Pub potables
16 King, in Cannes
17 Choir voice
18 New
20 Pal of Pooh
22 Stephen of "Still Crazy"
23 Hobbyist's abbr.
24 Mineral-hardness scale name
27 Tot's train
32 Rock's Brian
33 Science room
34 Klutz

35 Folks from Indiana
38 Garrison
39 Flop
40 Ostrich's kin
42 Exhibited ennui
45 In a way
49 "Metamorphoses" poet
50 Hosp. hookups
52 Carry on
53 Ms. Rowlands
54 Golf prop
55 Like some vaccines
56 Gross

57 Last letter in London
58 Mr. Disney

DOWN

1 Line of fashion?
2 Capital on a fjord
3 Second-hand
4 Also-rans
5 Clinging crustacean
6 — Jima
7 Radar dot
8 Dire
9 Hype
10 Pot starter
11 Laugh-a-minute
19 Concerning
21 Altar vow
24 "I'm not impressed"
25 Music's Yoko
26 Snooker
28 Guffaw syllable
29 Fanatical
30 Rowing need
31 Frequently
36 Half the weekend
37 Chemical suffix
38 Groove
41 Kansas City's st.
42 Quotable Berra
43 Opposite of "sans"
44 Bubble-head
46 O'Hara estate
47 Cameo shape
48 Fedora fabric
51 Victory sign

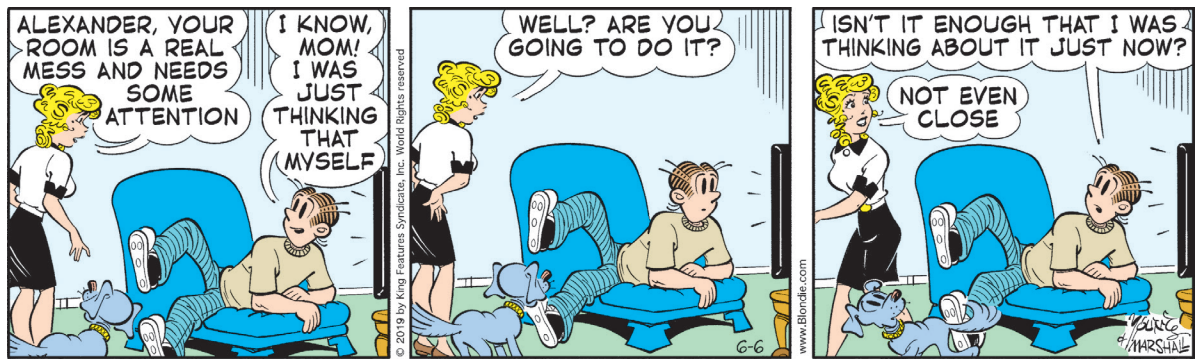
Solution time: 24 mins.

M	A	R	C	W	A	G	G	A	G	A		
O	N	O	R	A	B	E	A	L	A	N		
P	T	B	A	R	N	U	M	S	L	U	S	T
S	I	E	N	A	S	C	A	M	P	S		
				I	T	C	H	A	S	I		
P	I	T	A	H	I	T	S	N	B	A		
A	M	Y	L	A	N	E	S	U	R	B		
R	P	M	A	I	D	E	B	M	O	C		
			P	O	I	U	S	S				
B	E	A	R	D	S	P	A	S	S	E		
U	L	N	A	P	E	R	A	N	N	U	M	
S	M	U	T	P	E	R	I	D	O	R	M	
T	O	M	E	D	E	B	O	B	E	Y		

Yesterday's answer 6-6

1	2	3	4	5	6	7	8	9	10	11	
12				13				14			
15				16				17			
18				19			20	21			
			22					23			
24	25	26		27	28	29			30	31	
32				33					34		
35			36	37					38		
			39				40	41			
42	43			44		45			46	47	48
49				50	51				52		
53				54					55		
56				57					58		

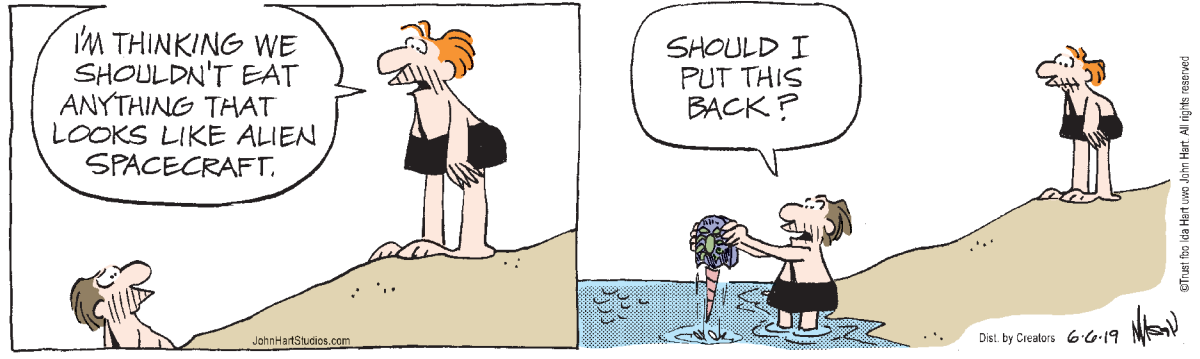
BLONDIE



RHYMES WITH ORANGE



B.C.



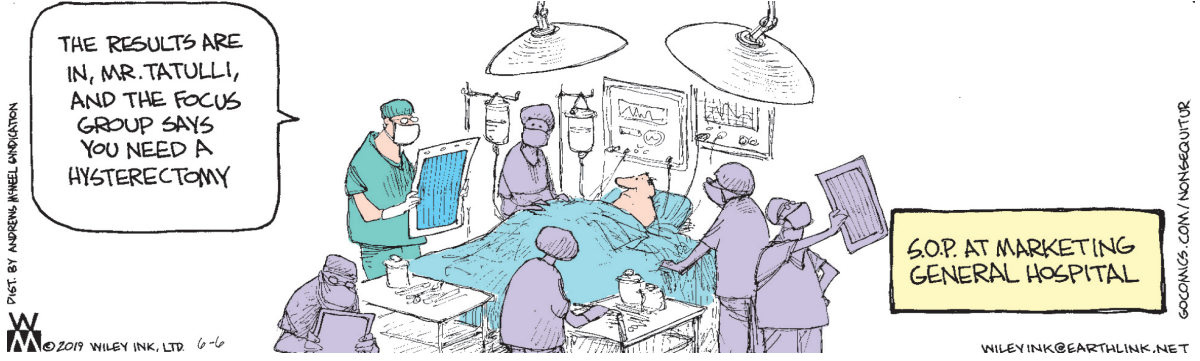
DILBERT



BIZARRO



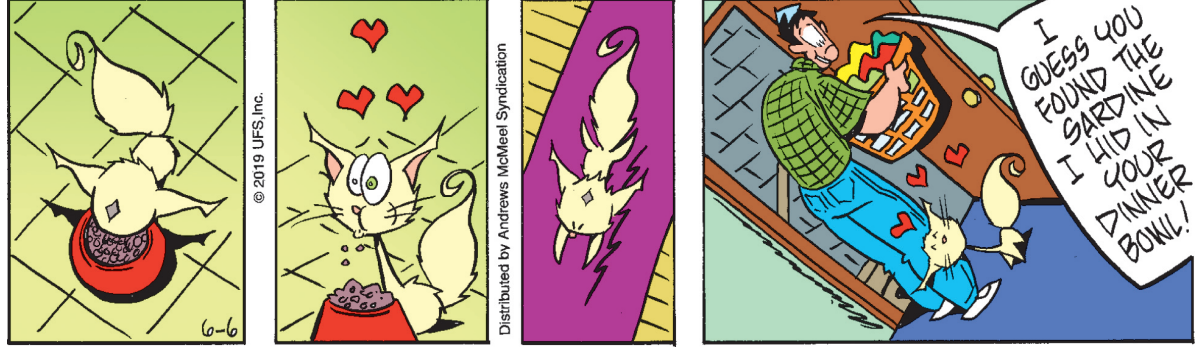
NON SEQUITUR



WIZARD OF ID



ROSE IS ROSE



JANRIC CLASSIC SUDOKU

Fill in the blank cells using numbers 1 to 9. Each number can appear only once in each row, column and 3x3 block. Use logic and process elimination to solve the puzzle. The difficulty level ranges from Bronze (easiest) to Silver to Gold (hardest).

Rating: BRONZE

Solution to 6/05/19

5		3			1	9				
	4	7		2						
9	8	5		7	4					
8		7	2		5		1			
			8	3						
2	3		1		8			4		
	5	4		6		1		3		
			9		1		5			
1	2			7				8		

7	5	1	9	3	2	8	6	4		
6	2	4	7	5	8	9	1	3		
3	8	9	6	1	4	2	7	5		
1	4	2	8	7	3	5	9	6		
5	6	7	2	4	9	1	3	8		
9	3	8	5	6	1	4	2	7		
4	9	5	3	2	7	6	8	1		
2	1	3	4	8	6	7	5	9		
8	7	6	1	9	5	3	4	2		

6/06/19