

BUSINESS DIRECTORY

Arborist

**Affordable Rates
BIGBY'S TREE SERVICE**

ISA CERTIFIED ARBORISTS

- Pruning
- Removal
- Stump Grinding
- Excavator/Brush Rake
- Vegetation Management

(503)791-0767

bigbystreeservice.com

CCB#158562

Handyman Services

North Coast Handyman & Woodworking, LLC
(503) 440-5758
Facebook: northcoasthw
Interior remodeling, siding, windows, decks, rot specialist.
Licensed, bonded, & insured.
CCB#215908

Lawn & Garden

Bellos Landscape Maintenance & House Services
Retaining walls* Moss Removal* Storm cleanups* Hedging* Dumping Service* Brush Clearing* Weeding* One-time cleanups & year round maintenance* Bark Pressure washing* Fences Deck Repairs* Painting Driveway Grading

Free Estimates
Call Jose (503)741-1582

De Jesus Landscape
Have you gotten behind on your landscape projects?

From one time clean ups to year round maintenance; new installations, & grading; we want to help!

No job too big or too small so give us a call
503-791-5329
Ask for Alex LCB#9629

JIM'S LAWN CARE
• Brush Clearing • Lawns • Shrubs
• Hauling • Gutter & Storm-Cleanup
(503)325-2445
• Free Estimates

Lawn & Garden

Diego's Lawn Care LLC

One time clean ups!
Year-round maintenance!

Mowing, Edging, Weeding, Trimming, Bark Dust, Hauling. Many other services!

Call Diego
(503)791-0190

Ellis Tree & Lawn Service
One-time clean-up or year-round lawn care. Brush clearing, tree service, stump grinding, pressure washing & many other services.
Call Rick (503)791-1837

Masonry

B&B STONE AND TREE LLC
Stone Masonry

- Retaining walls
- Steps
- Patios
- Artistry

(503) 853-5991
CCB# 212106

Vegetation Management

Bigby's Tree Service

- Excavator mounted Flail Mower
- Brush Raking
- Brush Hogging
- Lot Clearing
- Scotch Broom Removal
- Chipping
- Invasive Species Removal
- Levee/Dike Mowing
- Low Impact Logging.

(503)791-0767

bigbys tree service.com

Affordable rates.
CCB#158562

SUDOKU

Fill in the blank cells using numbers 1 to 9. Each number can appear only once in each row, column and 3x3 block. Use logic and process elimination to solve the puzzle. The difficulty level ranges from Bronze (easiest) to Silver to Gold (hardest).

| | | | | | | | | |
|---|---|---|---|---|---|---|---|---|
| 7 | 8 | | | 6 | 3 | | | |
| 9 | | 3 | 8 | | | | | |
| | | | | 7 | 4 | | 9 | |
| | | 9 | | 4 | | | | 2 |
| 6 | | 2 | | | 9 | | 4 | |
| 4 | | | 1 | | 7 | | | |
| 2 | | 1 | 3 | | | | | |
| | | | | 5 | | 2 | | 1 |
| | 4 | | 7 | | | | 9 | 6 |

Rating: SILVER

Solution to 3/7/19

| | | | | | | | | |
|---|---|---|---|---|---|---|---|---|
| 4 | 9 | 7 | 2 | 1 | 8 | 6 | 5 | 3 |
| 2 | 8 | 3 | 5 | 9 | 6 | 7 | 4 | 1 |
| 1 | 5 | 6 | 7 | 4 | 3 | 9 | 2 | 8 |
| 9 | 6 | 1 | 3 | 7 | 2 | 4 | 8 | 5 |
| 7 | 4 | 8 | 1 | 6 | 5 | 2 | 3 | 9 |
| 5 | 3 | 2 | 4 | 8 | 9 | 1 | 6 | 7 |
| 3 | 7 | 4 | 8 | 2 | 1 | 5 | 9 | 6 |
| 8 | 2 | 9 | 6 | 5 | 7 | 3 | 1 | 4 |
| 6 | 1 | 5 | 9 | 3 | 4 | 8 | 7 | 2 |

3/8/19

© 2019 Janinc Enterprises Dist. by creators.com

SUDOKU

Fill in the blank cells using numbers 1 to 9. Each number can appear only once in each row, column and 3x3 block. Use logic and process elimination to solve the puzzle. The difficulty level ranges from Bronze (easiest) to Silver to Gold (hardest).

| | | | | | | | | |
|---|---|---|---|---|---|---|---|---|
| | 9 | 4 | | 1 | 8 | 2 | | |
| 8 | | | 5 | | | | | 4 |
| | | 9 | | | 7 | | | |
| | | 6 | | | 5 | 9 | | 8 |
| | 3 | | | 2 | | | 4 | |
| 4 | 5 | 3 | | | 1 | | | |
| | | 9 | | | 1 | | | |
| 6 | | | | 4 | | | | 9 |
| | | 1 | 5 | 9 | | 4 | 6 | |

Rating: GOLD

Solution to 3/8/19

| | | | | | | | | |
|---|---|---|---|---|---|---|---|---|
| 7 | 8 | 4 | 2 | 9 | 6 | 1 | 3 | 5 |
| 9 | 1 | 3 | 4 | 8 | 5 | 6 | 2 | 7 |
| 5 | 2 | 6 | 1 | 3 | 7 | 4 | 8 | 9 |
| 1 | 7 | 9 | 6 | 4 | 3 | 8 | 5 | 2 |
| 6 | 3 | 2 | 5 | 7 | 8 | 9 | 1 | 4 |
| 4 | 5 | 8 | 9 | 1 | 2 | 7 | 6 | 3 |
| 2 | 9 | 1 | 3 | 6 | 4 | 5 | 7 | 8 |
| 3 | 6 | 7 | 8 | 5 | 9 | 2 | 4 | 1 |
| 8 | 4 | 5 | 7 | 2 | 1 | 3 | 9 | 6 |

3/9/19

© 2019 Janinc Enterprises Dist. by creators.com

Oregon Coast Real Estate

WWW.OREGONCOASTREALESTATE.COM

135 NW Cedar Ct., Warrenton

OPEN HOUSE: SATURDAY MARCH 9, 1-3PM



- Newly remodeled kitchen
- Cozy pellet stove
- Vaulted ceilings
- Backyard with Patio

\$299,900

CHRISTY CHALOUX COULOMBE
503-724-2400

Windermere
REAL ESTATE
WINDERMERE REALTY TRUST

745 Ave Q., Seaside

OPEN HOUSE: SAT 3/9 AND SUN 3/10, 1:00 TO 3:00 PM



- Additional lot included with investment potential
- 3bd, 1.5 ba, detached garage with workshop area

\$245,000

TERRY MISTOFSKY
909-633-9886

AREA Properties
503-325-6848

3990 Abbey Lane #B208, Astoria

OPEN HOUSE: SATURDAY MARCH 9TH, 3:00-5:00PM



- Cannery Loft Studio Condo-minium
- River Front, Corner Unit
- Pier 39, The Riverwalk, and Astoria Trolley at your doorstep!

\$289,000

JENNY FRANK
503-440-1973

Windermere
REAL ESTATE
WINDERMERE REALTY TRUST

92722 Old Market Rd., Astoria



- 2 bedroom, 1 bath manufactured home
- Located on .45 of an acre private corner lot
- 2,400 sq ft large shop built in 2008 with oversized bay doors
- Convenient location and within minutes to Astoria

\$219,900

MARY WIKSTROM
503-791-9381

AREA Properties
503-325-6848

Mill Pond Properties

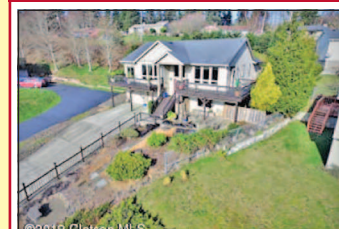


- TL6888 Mill Pond Lane Astoria, OR 97103 **\$45,000**
- TL6893 Mill Pond Lane Astoria, OR 97103 **\$45,000**

MARY WIKSTROM
503-791-9381

AREA Properties
503-325-6848

1248 Sonora Ave., Astoria



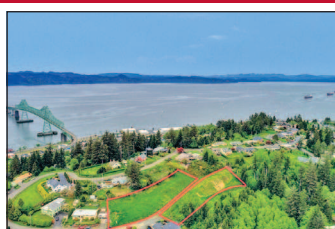
- 4 bedrooms, 3 baths, 2,747 sq. ft.
- Stunning water and mountain views
- Daylight basement, large living room, second kitchen area
- Large driveway, double garage

\$498,500

MARY WIKSTROM
503-791-9381

AREA Properties
503-325-6848

186 W. Jerome Ave., Astoria



- Subdivision opportunity with potential for 10 separate home sites, or build your dream home on these 1.31 beautiful acres
- South facing property sits in a desirable neighborhood near the waterfront
- Utilities at the property line, road easement already in place

\$375,000

MAGGIE ARMSTRONG
971-901-1043

THE KELLY GROUP
REAL ESTATE

88724 Teal Rd, Gearhart



- Built in 2009
- One-Level Home
- Elevated Lot
- Over Half Acre
- 3 BD, 3 Bths, 1914 Sq Ft

\$379,000

MELISSA EDDY
503-440-3258

Windermere
REAL ESTATE
WINDERMERE REALTY TRUST

830 5th Ave, Seaside



- Great Home – Great Value
- Solar Heat features
- Set-back off the road
- Mature Garden
- Private-like Setting

\$285,000

MELISSA EDDY
503-440-3258

Windermere
REAL ESTATE
WINDERMERE REALTY TRUST

210 W Grand Ave., Astoria



- 3 Bedrooms, 3 Baths, 2,850 Sq. Ft.
- Exquisite views of the Columbia River, Washington Coast & Bridge
- Open floor plan, newly renovated kitchen
- .15 acre lot

\$599,000

DEBRA BOWE
503-440-7474

Windermere
REAL ESTATE

411 W E Street, Rainier, OR



- View of the Columbia River "Breath-taking"
- 2 Bedrooms 1 Full Bath
- Beautiful Attic for Storage, wood finished.
- 1008 Sq. Ft. + Full Basement
- HUD Owned – HUD Properties Sold "AS-IS"
- FHA Should Be OK with Repair Escrow

\$127,000

CARRIAGE HOUSE REAL ESTATE
503-739-3500

1224 2nd Ave, Hammond



- Easy Living Ranch Style Home
- Ranch style home with vaulted ceilings, open floor plan, attached garage, updated kitchen and bathrooms

\$209,900

CHRISTY CHALOUX COULOMBE
503-724-2400

Windermere
REAL ESTATE
WINDERMERE REALTY TRUST

35470 Gustafson Ln., Astoria



- 4 bedrooms, 3.5 baths, 2,080 sq.ft
- Quiet country location, 1.15 acres
- Level Lot. Southern exposure. Large fenced garden area.
- Room for shop, great wrap around deck and 220 outlet outside for RV parking

\$390,000

VICKY RUTHERFORD
503-338-2116

AREA Properties
503-325-6848

3499 Grand Ave., Astoria



- 3 bedrooms, 2 baths, 2,226 sq. ft.
- Own a piece of Astoria's history, charming victorian built in 1901
- Columbia River views
- .23 acre for plenty of room for gardening

\$350,000

DEBRA BOWE
503-440-7474

Windermere
REAL ESTATE

292 W Irving Ave., Astoria



- 4 bedrooms, 3 baths, 3,671 sq. ft.
- Picture perfect custom contemporary in one of Astoria's finest neighborhoods.
- Spectacular views of the Columbia River
- No detail overlooked. 8-9 ft. ceilings, walls of windows. Top of the line everything

\$869,000

DEBRA BOWE
503-440-7474

Windermere
REAL ESTATE

1850 7th St, Astoria



- Ranch style home on South Slope
- Great views of bay and sunsets
- Full basement with walk out to back yard
- Off street parking

\$235,000

VICKY RUTHERFORD
503-338-2116

AREA Properties
503-325-6848

ADVERTISE YOUR LISTINGS HERE!

Call **SARAH SILVER**
503-325-3211
ssilver@dailyastorian.com