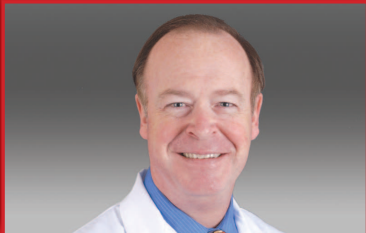




URGENTCARE NW - ASTORIA

a smart **ER** alternative

*Life happens...
That's why we're here!*



Keith Klatt, MD



Sally Baker, PA-C



Mark Tabor, PA-C



Kenyon Solecki, PA-C

Our **friendly** and **dedicated Physicians and Physician Assistants** are available for all of your **routine healthcare needs**, not just for emergency situations!

If you're suffering from a **headache, toothache, earache, backache, any illness or injury**, are in need of a **refill of your prescription medications**, or even a **sports physical or DOT physical**, our dedicated staff is here to assist you!

We are open 7 days a week. We are located in the **Park Medical Building East in Suite 111.** We accept **most insurances**, offer a cash discount and also accept the **Oregon Health Plan, WA Medicaid and Medicare.**

Express Healthcare for Busy Lifestyles

www.urgentcarenwastoria.com

We observe the following holidays & are closed on July 4th, Thanksgiving, Christmas & New Year's Day.



**2120 Exchange Street
Suite 111
Astoria, Oregon**

Hours:
Mon-Fri 7AM-7PM
Sat-Sun 9AM-7PM

503-325-0333