

Kid Scoop

THE AWARD-WINNING PRINT & ONLINE FAMILY FEATURE



© 2019 by Vicki Whiting, Editor Jeff Schinkel, Graphics Vol. 35, No. 14

How Do Leprechauns Get Their Pots of Gold?

Around St. Patrick's Day, you will often hear legends about leprechauns and their pot of gold at the end of the rainbow. **Have you ever wondered where they get all of that gold?**



We make shoes for fairies!



Their shoes wear out very quickly because fairies dance all night.



So, we are always busy making new shoes for them. And they pay us in gold – LOTS of gold!

Watching the Costs

Just making and selling shoes isn't enough to collect the gold needed to fill a leprechaun's pot. Leprechauns have to keep an eye on the **costs** of making fairy shoes, too.

Take a look at the cost of shoe supplies on this list.

- Tree Bark for Shoe Soles: 2 coins
- Pine Needles for Sewing: 1 coin
- Daisy Petals for Shoe Liners: 2 coins
- Lilac Petals: 3 coins
- Petunia Petals: 2 coins
- Rose Petals: 4 coins

How many shamrocks can you find on this page?

What if the leprechaun spent more gold coins to make the shoes than he charged the fairies? He would run out of gold pretty quickly!

If it costs 7 gold coins for the supplies to make one pair of fairy shoes, what should the leprechaun charge so that he covers his costs and has some money left over to pay himself for his work to make the shoes?

Price matters!

Picking the right price is important. If the leprechaun charges too little, he will lose money. But if he charges too much, he will lose customers.

Use these worksheets to add up the costs of making each pair of shoes. Then find the difference between the costs and the selling price to determine the profit for each pair of shoes.

50 gold coins! That's way too expensive for me!

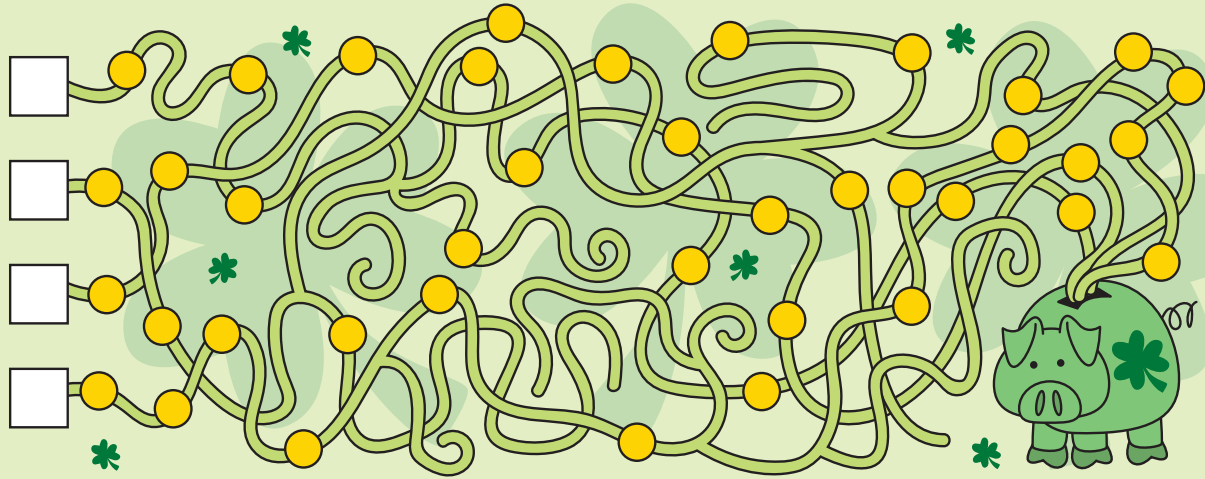


LEPRECHAUN'S GOLDEN VOCABULARY WORD:

PROFIT: Money earned after the expenses are paid.

Pixie Prancers	Pretty Petunias	Refined Rosies
TREE BARK	TREE BARK	TREE BARK
DAISY PETALS	DAISY PETALS	DAISY PETALS
PINE NEEDLES	PINE NEEDLES	PINE NEEDLES
LILAC PETALS	PETUNIA PETALS	ROSE PETALS
TOTAL COST: _____	TOTAL COST: _____	TOTAL COST: _____
PRICE: 13	PRICE: 16	PRICE: 20
PROFIT: _____	PROFIT: _____	PROFIT: _____

Add up the coins on each path that leads to the Leprechaun piggy bank. Which path has the most gold coins?



Extra! Extra!

Math is GOLDEN!

Numbers are useful every day. Look through the newspaper to find a number that tells each of the following:

- An address
- A price
- A phone number
- An age
- A year

Standards Link: Research: Use the newspaper to locate information.

Kid Scoop Puzzler

Fairy Shoe Sorter

Draw lines between each pair of fairy shoes to make exact matches. Look carefully!



Standards Link: Follow simple written directions.

Double Double Word Search

- LEPRECHAUN
- CUSTOMERS
- PATRICK
- LEGENDS
- FAIRIES
- PETALS
- PROFIT
- COSTS
- SHOES
- PRICE
- NIGHT
- GOLD
- PAIR
- BUSY
- POT

Find the words in the puzzle. How many of them can you find on this page?

Y S U B S R H K O P
 G O L D I E P C S R
 L A N A T O O I P O
 E D P H T S S R R F
 G P G R T E O T I I
 E I F S O I P A C T
 N U A H C E R P E L
 D T S E I R I A F S
 S C U S T O M E R S

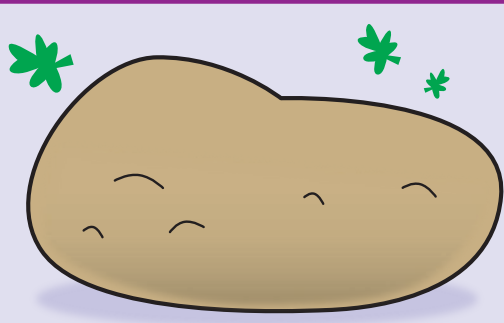
Standards Link: Letter sequencing. Recognized identical words. Skim and scan reading. Recall spelling patterns.

FROM THE Kid Scoop LESSON LIBRARY

Small, Large, Larger and Largest

Find four numbers in today's newspaper. Cut them out and glue them on a piece of paper in order from the smallest to the largest.

Standards Link: Research: Use the newspaper to locate information.



When are Irish potatoes not Irish potatoes?

ANSWER: When they are French fries!

Thanks to the following businesses for supporting **Newspapers In Education**

www.dailyastorian.com/nie

- Appelo Archives Center
- Hees Enterprises Inc.
- Quackenbush Builders Inc.
- Bridgewater Bistro
- Clatsop Behavioral Healthcare
- Lazerquick Seaside/Astoria
- Premium Adjustable Beds
- Suzanne Elise Assisted Living
- Moberg & Rust, Attorneys at Law

- Lower Columbia Clinic
- Ship Inn
- Rock Bauer Landscapes
- Diane Barendse, CPA
- Hammond Kennels
- Bergerson Construction
- Josephson's Smokehouse
- U Street Pub and Eatery

Emerald Heights
APARTMENTS
503-325-8221

Certified **ZENTANGLE** Teacher
106 3rd St. ASTORIA
503.440.9788

Quality Work at Affordable Rates
JJ ELECTRIC SERVICE
503-739-7145
7125 Holladay Seaside, Oregon
www.jjelectricservice.com

SUBWAY
11 W. Marine Dr. | Astoria | 503-325-3322

Columbia Veterinary Hospital
576 31st Street • Astoria
503-325-2250

The Garibaldi Museum
Maritime History
112 Garibaldi Ave
Garibaldi, Ore.
(503) 322-8411

Astoria Forest Products, LLC
10 Pier 1 • Suite 301
Astoria, Oregon 97103

KOA Astoria, Warrenton & Seaside
1100 Northwest Ridge Road
Hammond, OR 97121
reservations 800-562-8506
info 503-861-2606

Northwest West Inc.
Income Tax Preparation
762 Avenue G • Seaside, OR 97138
503-738-3480

Tires LES SCHWAB WARRENTON 861-3252
1167 SE Marlin
McCALL TIRE CENTER SEASIDE 738-8243
2155 S. Roosevelt

Morgan Civil Engineering
PO Box 358 • Manzanita
503-368-6186

JOE'S Mobil 1701 Marine Dr.
Astoria, OR
503-325-7812

Classica BODYWORKS AND TOWING
503.325.0411
34747 Hwy 101 Bus.
ASTORIA

LEWIS & CLARK
TIMBERLANDS™
MANAGED BY
GREENWOOD RESOURCES*

RE/MAX
River & Sea

Tevin Bros. LAND & TIMBER
ASTORIA | 503-556-0410

Sunspire Health
Astoria Pointe
The Rosebriar
263 W Exchange • Astoria | (877) 435-7790

NORTHWEST READY MIX
950 Olney Ave • Astoria
503-325-3562

STREET FOURTEEN CAFE
1410 COMMERCIAL STREET
ASTORIA
503-325-5511

DA YANG Great Ocean
Da Yang Seafoods LTD.

La Cabana D Raya
MEXICAN RESTAURANT
35431 HWY 101 BUS • ASTORIA • 503-325-3656

Bayshore Animal Hospital
325 Marlin Avenue
WARRENTON
503-861-1621

WORKSOURCE OREGON
NORTHWEST OREGON EMPLOYMENT DEPT.
450 MARINE DR ASTORIA 503-325-4821

Home Furnishings
1033 Commercial Street
Astoria, Oregon 97103
(503) 325-5620

COLUMBIA RIVER BAR PILOTS
Providing safe passage since 1846