

# Kid Scoop

THE AWARD-WINNING PRINT & ONLINE FAMILY FEATURE



© 2019 by Vicki Whiting, Editor Jeff Schinkel, Graphics Vol. 35, No. 9

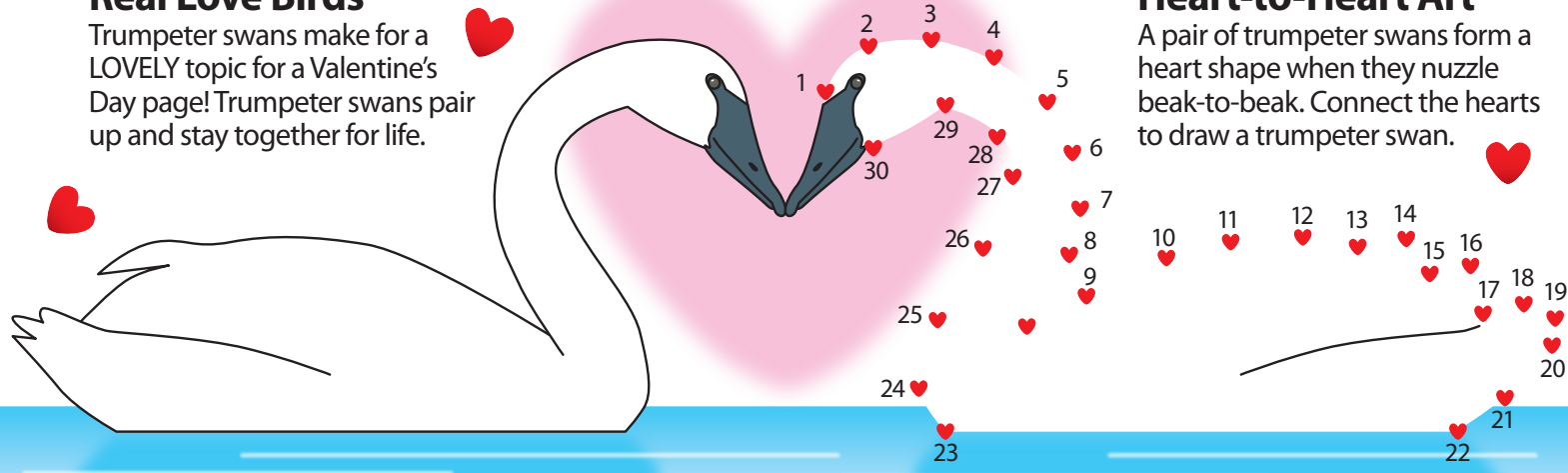
VALENTINE'S DAY

## Trumpeter Swans

Challenge a friend to see who can find the most hearts on this page!

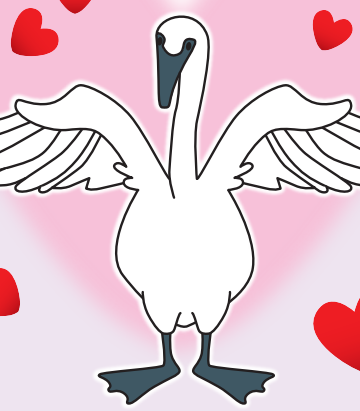
### Real Love Birds

Trumpeter swans make for a LOVELY topic for a Valentine's Day page! Trumpeter swans pair up and stay together for life.



### Heart-to-Heart Art

A pair of trumpeter swans form a heart shape when they nuzzle beak-to-beak. Connect the hearts to draw a trumpeter swan.



### Large and Lovely

Trumpeter swans are the largest native waterfowl in North America. Do the math to find out how big they are:

An adult swan can grow to be 25 - 21 = \_\_\_\_\_ feet tall.  
(Are you taller than a trumpeter swan?)

A trumpeter swan's wingspan is about 21 - 14 = \_\_\_\_\_ feet wide.

A trumpeter swan weighs about 7 + 7 + 7 = \_\_\_\_\_ to 42 - 12 = \_\_\_\_\_ pounds.

### Replace the missing words.

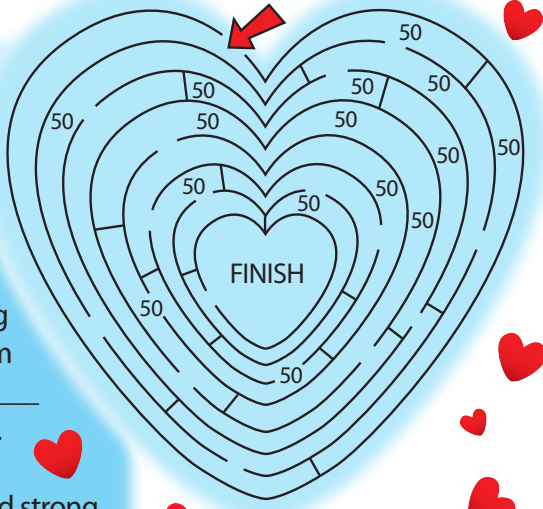
Trumpeters \_\_\_\_\_ underwater to eat plants. Their broad, flat \_\_\_\_\_ have tiny tooth-like notches along the edges to help them strain aquatic \_\_\_\_\_ from water as they feed.

The birds' long necks and strong feet allow them to \_\_\_\_\_ plants in water up to 4 feet deep.

These birds eat the leaves, \_\_\_\_\_ and roots of many kinds of pond weeds.

### Flying Fact Maze

In order to take off, how many feet of water does a trumpeter swan need? Add the numbers on the correct path to the center of the heart to get the answer.



### Why are they called "trumpeter" swans?

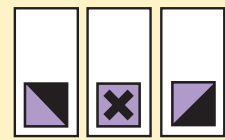
They make a noise that sounds like a person playing a trumpet! Hear their call at [kidscoop.com](http://kidscoop.com)

### Trumpeter Swan Secret Code

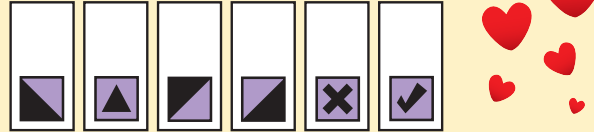
= B    = E    = N    = P    = U  
 = C    = G    = O    = T    = Y

A male swan is called a:

A female swan is called a:



A young swan is called a:



**Extra! Extra!**

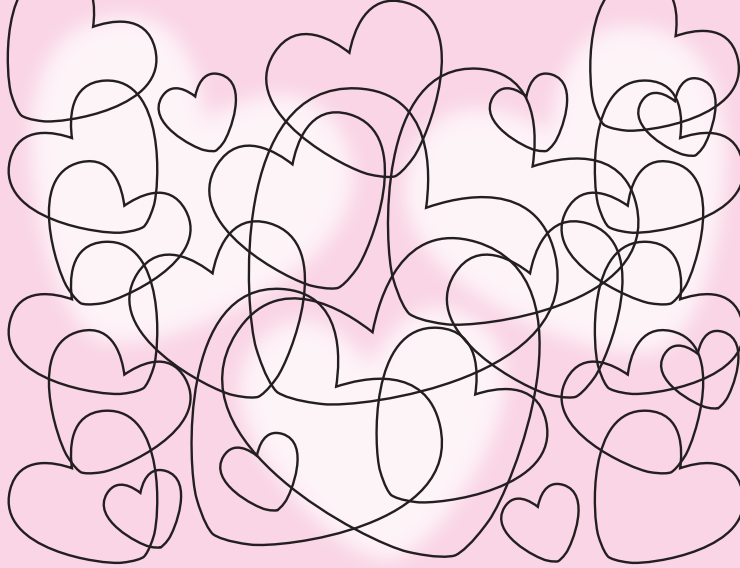
### Measure Up!

Locate a photograph in the newspaper and make of list of the people, animals or things in the image. Measure each one in inches and in centimeters. Label each with the measurements.

Standards Link: Research: Use the newspaper to locate information.

### Kid Scoop Puzzler

How many hearts can you find?

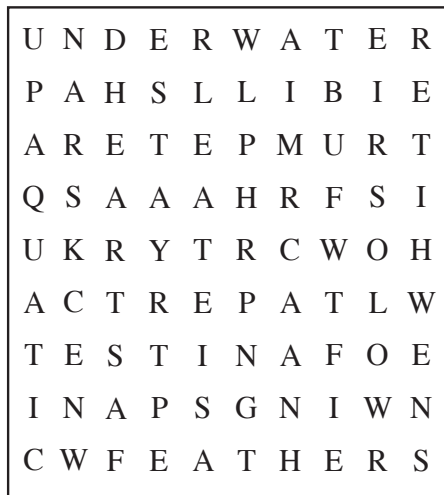


Standards Link: Follow simple written directions.

### Double Double Word Search

UNDERWATER  
TRUMPETER  
WINGSPAN  
FEATHERS  
NOTCHES  
AQUATIC  
HEARTS  
SWANS  
WATER  
WHITE  
BILLS  
NECKS  
PAIR  
STAY  
EAT

Find the words in the puzzle. How many of them can you find on this page?



Standards Link: Letter sequencing. Recognized identical words. Skim and scan reading. Recall spelling patterns.

### FROM THE Kid Scoop LESSON LIBRARY

#### Nouns and Nouns

Look through the newspaper for five singular nouns. Write them in a list on a piece of paper. Next to each noun, tell if it is a person, place or thing. Then next to that, write each noun in its plural form.

Standards Link: Language Arts: Students recognize nouns.



**What kind of Valentine's Day candy is never delivered on time?**

ANSWER: CHOCOLATE.

Thanks to the following businesses for supporting

### Newspapers In Education

[www.dailyastorian.com/nie](http://www.dailyastorian.com/nie)

- Appelo Archives Center
- Hees Enterprises Inc.
- Quackenbush Builders Inc.
- Bridgewater Bistro
- Clatsop Behavioral Healthcare
- Lazerquick Seaside/Astoria
- Premium Adjustable Beds
- Suzanne Elise Assisted Living
- Moberg & Rust, Attorneys at Law

- Lower Columbia Clinic
- Ship Inn
- Rock Bauer Landscapes
- Diane Barendse, CPA
- Hammond Kennels
- Bergerson Construction
- Josephson's Smokehouse
- U Street Pub and Eatery

**Emerald Heights**  
APARTMENTS  
503-325-8221

Certified **ZENTANGLE** Teacher  
106 3rd St. ASTORIA  
503.440.9788

Quality Work at Affordable Rates  
**JJ ELECTRIC SERVICE**  
503-739-7145  
7125 Holladay Seaside, Oregon  
[www.jjelectricservice.com](http://www.jjelectricservice.com)

**SUBWAY**  
11 W. Marine Dr. | Astoria | 503-325-3322

**Columbia Veterinary Hospital**  
576 31st Street • Astoria  
503-325-2250

**The Garibaldi Museum**  
Maritime History  
112 Garibaldi Ave  
Garibaldi, Ore.  
(503) 322-8411

**Astoria Forest Products, LLC**  
10 Pier 1 • Suite 301  
Astoria, Oregon 97103

**KOA** Astoria, Warrenton & Seaside  
1100 Northwest Ridge Road  
Hammond, OR 97121  
reservations 800-562-8506  
info 503-861-2606

**Northwest West Inc.**  
Income Tax Preparation  
762 Avenue G • Seaside, OR 97138  
503-738-3480

**Tires LES SCHWAB** WARRENTON  
861-3252  
1167 SE Marlin  
**McCALL TIRE CENTER** SEASIDE  
738-8243  
2155 S. Roosevelt

**Morgan Civil Engineering**  
PO Box 358 • Manzanita  
503-368-6186

**JOE'S Mobil** 1701 Marine Dr.  
Astoria, OR  
503-325-7812

**Classic AND TOWING** 503.325.0411  
34747 Hwy 101 Bus.  
ASTORIA

**LEWIS & CLARK**  
TIMBERLANDS™  
MANAGED BY  
GREENWOOD RESOURCES\*

**RE/MAX**  
River & Sea

**Teerin Bros. LAND & TIMBER**  
ASTORIA | 503-556-0410

**Sunspire Health**  
Astoria Pointe  
The Rosebriar  
263 W Exchange • Astoria | (877) 435-7790

**NORTHWEST READY MIX**  
950 Olney Ave • Astoria  
503-325-3562

**STREET FOURTEEN CAFE** 1410 COMMERCIAL STREET  
ASTORIA  
503-325-5511

**DA YANG** Great Ocean  
Da Yang Seafoods LTD.

**La Cabana D Raya**  
MEXICAN RESTAURANT  
35431 HWY 101 BUS • ASTORIA • 503-325-3656

**Bayshore Animal Hospital**  
325 Marlin Avenue  
WARRENTON  
503-861-1621

**WORKSOURCE OREGON**  
NORTHWEST OREGON EMPLOYMENT DEPT.  
450 MARINE DR ASTORIA 503-325-4821

**Home Furnishings**  
1033 Commercial Street  
Astoria, Oregon 97103  
(503) 325-5620

**COLUMBIA RIVER BAR PILOTS**  
Providing safe passage since 1846