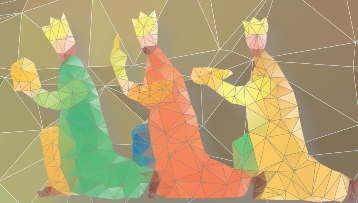


Worship



Rejoice in Jesus' Birth

Christmas Eve Candlelight Service • 10pm
 Christmas Day Worship Service • 10am



Bethany Free Lutheran Church

451 34TH STREET • ASTORIA
 (across from Safeway)

FOR MORE INFO CALL (503) 325-2925

Calvary Episcopal Church



DECEMBER 24
 8:30 pm - Carol Sing
 9 pm - Holy Eucharist

DECEMBER 25
 10 am - Holy Eucharist
 503 N. Holladay, Dr. • Seaside, OR

Last Sunday of Advent Service

SUNDAY • DECEMBER 23RD • NOON

Christmas Carol Service

MONDAY • DECEMBER 24TH • 7^{PM}

ASTORIA UNITED METHODIST CHURCH
 11th and Franklin Avenue • Astoria

*Enjoy wonderful instrumental music,
 candle lighting and refreshments.*

OUR SAVIOUR'S LUTHERAN CHURCH

Sunday, December 23
 8:00 & 10:00am
Fourth Sunday in Advent

Sunday December 24
 7:00pm

Family Christmas Eve Candlelight Service

320 1st Avenue
 (across from the Seaside Convention Center)
www.oslc-seaside.org

ALL ARE WELCOME

First Baptist Church

A place where you feel like family...come home.



Christmas Eve
Candlelight Service 6^{PM}
 December 24th

Christmas Day
 Sunday Advent
 Worship Services
 10:45AM

7th & Commercial, Astoria • (503) 325-1761

BETHANY LUTHERAN CHURCH

will sponsor a

LIVE NATIVITY

Acting out the birth of Jesus in a stable with animals

SATURDAY
 DECEMBER 15TH
 5-7 PM

On the Bethany Church lawn, across from Safeway



BETHANY FREE LUTHERAN CHURCH
 451 34TH STREET • ASTORIA
 503.325.2925

Lessons & Carols
 Wednesday, December 19th, 6PM
*A festival of readings and music
 for the season*

Christmas Eve Services
 Monday, December 24th

Family Worship
 4:30 PM

Hymn Sing
 10:30 PM

Midnight Mass with choir
 11 PM

Christmas Day Service
 Tuesday, December 25th

Morning Prayer
 10 AM



Grace Episcopal Church

1545 Franklin, Astoria
 (503) 325-4691
www.graceastoria.org

Christmas Eve Candlelighting Service at 7 pm

Special music provided by
**Members of
 the Congregation**
 Sermon:
 "The Light of Christmas"



Seaside United Methodist Church

241 N. Holladay Dr. • Seaside • 503-738-7562