

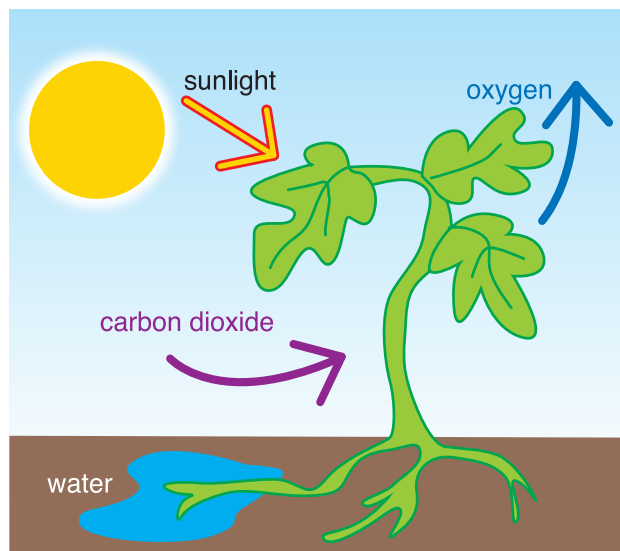
Kid Scoop

THE AWARD-WINNING PRINT & ONLINE FAMILY FEATURE



© 2018 by Vicki Whiting, Editor Jeff Schinkel, Graphics Vol. 34, No. 43

Why do leaves change color in the fall?



It's Not Easy Staying Green

Plants make food in a process called **photosynthesis**. During summer, plants take water up from their roots to their leaves. They absorb **carbon dioxide** from the air. These combine to make **chlorophyll** which makes plant leaves green.

Photosynthesis slows in fall as winter approaches. Trees and plants live off their stored food. The green chlorophyll disappears leaving red, orange and yellow leaves. The dry, brittle leaves soon drop from trees with the help of crisp autumn breezes.

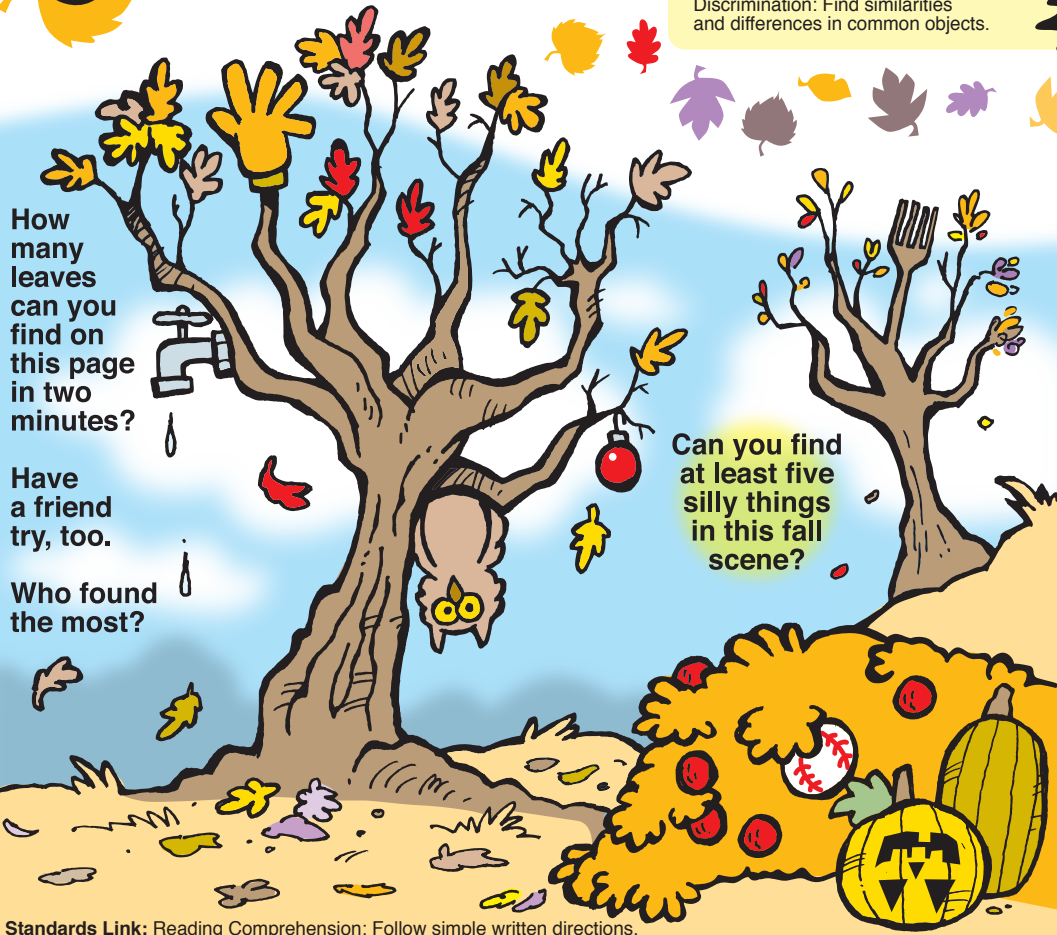
When the rain comes down, what goes up?

Find the answer in the fall leaf border! Start here. Then read every other letter as you move clockwise around the border.

Lookalike Leaves

All of the leaves at right have an identical twin – **except one**. Can you find it?

Standards Link: Visual Discrimination: Find similarities and differences in common objects.



How many leaves can you find on this page in two minutes?

Have a friend try, too.

Who found the most?

Can you find at least five silly things in this fall scene?

Standards Link: Reading Comprehension; Follow simple written directions.

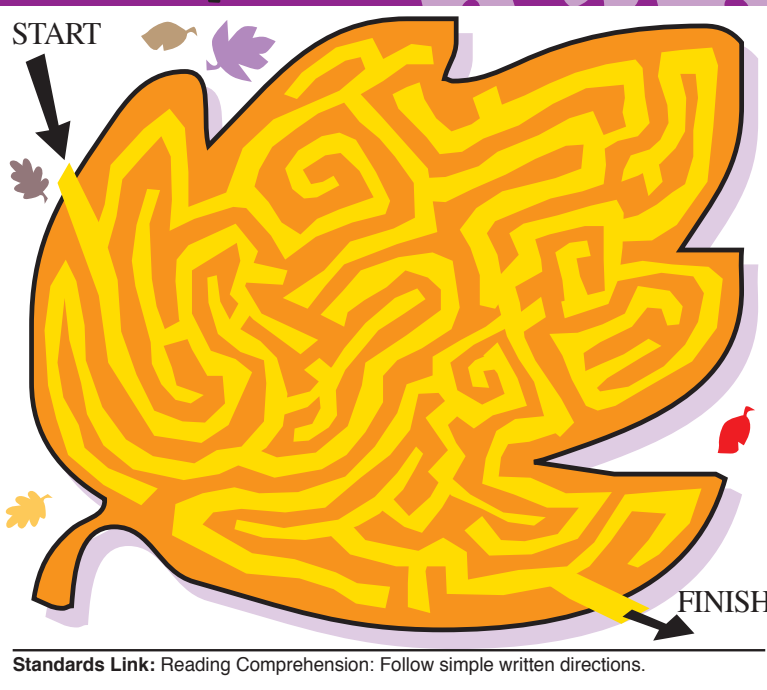
Extra! Extra! Fall Syllables

Find words in the newspaper that have the same number of syllables as the fall words below. Paste each word on the picture with the matching number of syllables.



Standards Link: Decoding and Word Recognition: Decode regular multi-syllabic words.

Kid Scoop Puzzler



Standards Link: Reading Comprehension: Follow simple written directions.

Double Double Word Search

- LEAVES
- WATER
- SYLLABLES
- CARBON
- SEASON
- WINTER
- SCENE
- BORDER
- CRISP
- ACORN
- GREEN
- DISAPPEAR
- ROOTS
- FALL
- DAYS

Find the words by looking up, down, backwards, forwards, sideways and diagonally.

S Y S E R E D R O B
Y S E L B A L L Y S
A T A L A R S V E R
D O S A S E C H A E
G O O F V T A N C T
R R N A C A R B O N
E N E C S W G E R I
E L G P S I R C N W
N R A E P P A S I D

Standards Link: Letter sequencing. Recognized identical words. Skim and scan reading. Recall spelling patterns.

FROM THE LESSON LIBRARY

Autumn
Find five words in the newspaper that describe the autumn season. Paste the words onto a sheet of paper. Write a sentence using each word. Decorate your paper with images of fall.

Standards Link: Grammar: Identify and use adjectives in writing. Sentence Structure: Write simple and complex complete sentences.



ANSWER: Climb a tree and act like a nut.

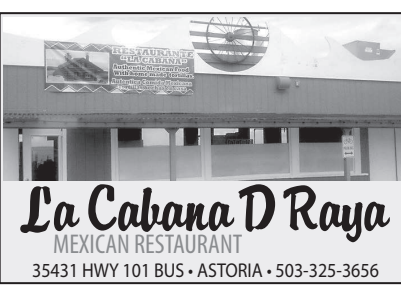
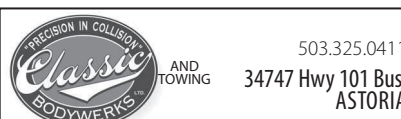
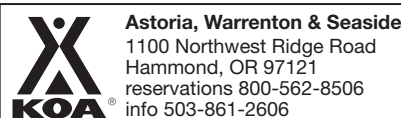
Columbia Veterinary Hospital

576 31st Street • Astoria
503-325-2250



Astoria Forest Products, LLC

10 Pier 1 • Suite 301
Astoria, Oregon 97103



Thanks to the following businesses for supporting Newspapers In Education

- Appelo Archives Center
- Hees Enterprises Inc.
- Quackenbush Builders Inc.
- Bridgewater Bistro
- Clatsop Behavioral Healthcare
- Lazerquick Seaside/Astoria
- Premium Adjustable Beds
- Suzanne Elise Assisted Living
- Moberg & Rust, Attorneys at Law
- Lower Columbia Clinic
- Ship Inn
- Rock Bauer Landscapes
- Diane Barendse, CPA
- Hammond Kennels
- Bergerson Construction
- Josephson's Smokehouse
- U Street Pub and Eatery

