

Talk trains during Clamshell Railroad Days

ILWACO — Join the fun as we celebrate Clamshell Railroad Days on Saturday and Sunday, July 14 and 15, at the Columbia Pacific Heritage Museum with expanded events and old favorites.

The \$5 admission fee includes a souvenir pin and museum entrance for two days. Kids under 12 get in free.

During “Train Talks,” local experts will discuss the history of the railroad.

At 2 p.m. Saturday, Dr. Gary Brooks will present “Railroad Logging Around Willapa Bay.” Brooks has been building miniatures for 20 years and is perhaps best known for his 34-foot by 8.5-foot model of the World War I Spruce Production Division mill, on view at Fort Vancouver.

At 1 p.m. Sunday, historian Bruce Weilepp narrates the “Return of the Railcar Nahcotta.” For almost 40 years,



COURTESY COLUMBIA PACIFIC HERITAGE MUSEUM

Dr. Gary Brooks

the Nahcotta was parked outside of Puyallup, Wash., at the home of rail car collector Henry Welzel, who left the car to the Columbia Pacific Heritage Museum when he died. Its journey back to Ilwaco 15 years ago was documented

with photographs and video.

At 2 p.m., celebrate the 15th anniversary of the car's return with cake in the courtyard.

The railcar Nahcotta will be open for tours on both days. Members of the Nah-

cotta Preservation Committee will be on site to talk about new findings and the ongoing preservation of the Nahcotta railcar.

For more information, call 360-642-3446 or visit columbiapacificheritagemuseum.org.

The search for the Beeswax Shipwreck

SEASIDE — Join us at 1 p.m. Saturday, July 14, as The Friends of the Seaside Library host anthropologist Scott Williams, who will speak on “Searching for the Beeswax Shipwreck.” The event will take place in the Community Room.

One of the most popular mysteries of the Oregon Coast has been the identification of the “Beeswax Wreck” at Nehalem Beach, in Tillamook County.

Identified over time by various researchers as either a Chinese or Japanese junk, a Spanish galleon, a Portuguese trader, or a lost English or Dutch pirate vessel, we have been able to determine that the ship was in fact a Spanish Galleon of the Manila Trade.

Nehalem Indian oral histories and the journals of the earliest traders in the



EDWARD STRATTON PHOTO

Scott Williams has been searching for a shipwreck off of Manzanita for the past decade through the Beeswax Wreck Project.

area indicate that the galleon wrecked prior to European settlement — indeed, before most European exploration of the Pacific Northwest. The site has been buried for the last 100 years.

However, blocks of beeswax are occasionally found

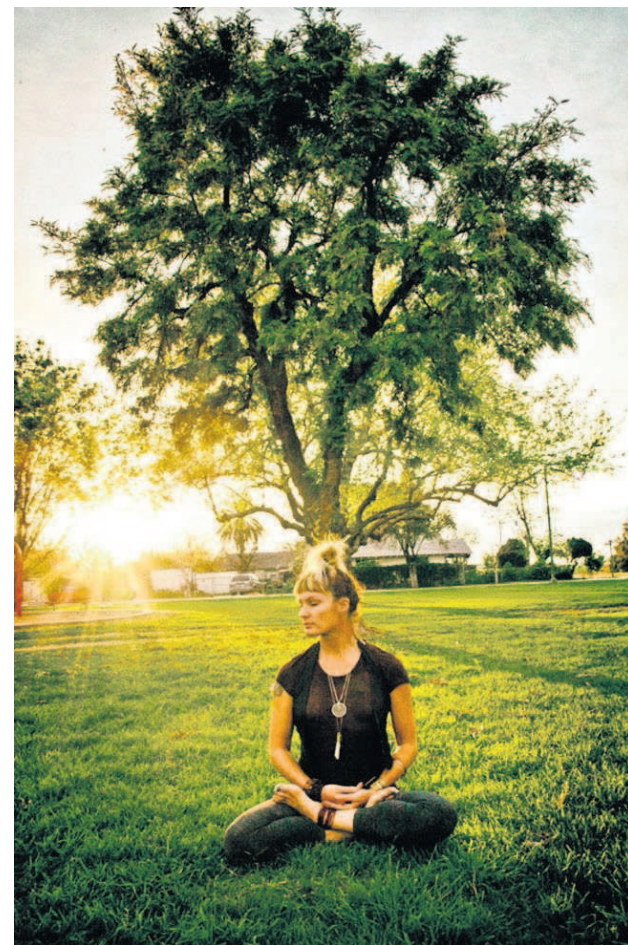
by beachcombers in the sand dunes adjacent to the site.

Archaeologists have recovered assemblages of Chinese porcelain sherds from nearby archaeological sites, including some that were modified into projectile points by local Nehalem

Native Americans. These sherds display design motifs indicating they were manufactured in China in the late 17th century and were intended for export to the European market. Analysis of the motifs indicates the majority of the porcelain was manufactured sometime between 1680 and 1700 AD.

Radiocarbon samples from wood known to be associated with the wrecked vessel and beeswax blocks that were part of her cargo have also been dated, and, while not as precise as the ceramic dates, they also indicate the vessel is from the period of the Spanish Manila Trade.

The Seaside Public Library is located at 1131 Broadway St.. For more information, call 503-738-6742 or visit seasidelibrary.org.



COURTESY SOU'WESTER LODGE

Shanna Gillette

Reconnect mind, body, and spirit at Sou'Wester

SEAVIEW, WASH. — Shanna Gillette, a certified yoga instructor, mindfulness coach and metaphysical counselor, leads a workshop at the Sou'Wester Lodge, 2 to 5 p.m. Wednesday, July 25.

Titled “Reconnecting Mind, Body & Spirit (Let That Shift Go!),” the three-hour workshop focuses on reducing stress, releasing tension and trauma from the body, discovering our perceived limitations and transcending them, creating a safe and respectful place to explore the heart, and designing simple practices to feel good every day.

Participants will use ancient yogic techniques mixed with the latest in neuroscience and proven methods to reconnect

mind, body and spirit and tap into the highest and best version of you.

This workshop is for students 12 and older; 10 students max. Bring a yoga mat, notebook and pen. Coffee and hot tea will be provided.

RSVP to souwesterfrontdesk@gmail.com or 360-642-2542. The cost is \$30.

The Sou'wester Lodge is located at 3728 J Place, Seaview, Wash.

This class is part of the Summer 2018 Workshop Series. All classes are open to the public, all skill levels welcome.

Visit souwesterlodge.com/calendar for the full schedule of artist-led workshops.