

PHOTOS COURTESY IMOGEN GALLERY

Artist Rachel Maxi lets it all hang out

ASTORIA — Seattle artist Rachel Maxi is holding her first solo exhibition at Imogen Gallery titled “Letting It All Hang Out.”

Known throughout the Pacific Northwest for her representational oil paintings of Seattle scenes, old trucks,

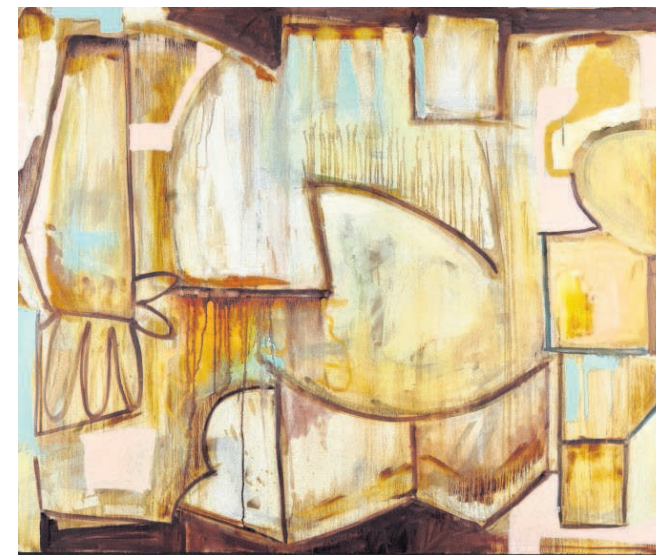
dumpsters and oysters, she has transitioned into the realm of abstraction.

Still working in oil, she explores the process of painting more intuitively, allowing an expression of personal growth and development after life-altering experiences.

The exhibition opens July 14 during Astoria’s Second Saturday Art Walk, with a reception held 5 to 8 p.m. Everyone is invited to join us for the reception and meet Maxi, who will be available to answer questions about her work. Light bites and beverages will be provided by the Astoria Coffee House & Bistro.

“Letting It All Hang Out: New Works by Rachel Maxi” will remain on display through Tuesday, Aug. 7.

Maxi is not a newcomer to Astoria. She spent several



Rachel Maxi’s ‘When She Comes,’ oil and gold spray paint on canvas.

months living and working here as a member of the restoration crew for the Astoria Column in 2015.

For more information about

Imogen Gallery, visit imogengallery.com, call 503-468-0620 or stop by in person to see what’s new. The gallery is located at 240 11th St.

Dining Out NORTH COAST AND PENINSULA

Trav's PLACE

Buy 1 Meal, Get 1 1/2 off
(of equal or lesser value)
Monday-Thursday
Offer expires 8/31/18

303 1st Avenue South, Ilwaco, Washington
360-777-3740 • travsplace.net
OPEN AT 4 AM

ROUGH day on the course? Make it up to yourself—Score a Friday Night Dinner Special!

Seaside Golf Course 451 Ave U Seaside 503-738-5261
seasidegolfcourse@gmail.com

CA 18 MP RESTAURANT

503.755.1818
www.camp18restaurant.com
Favorite stop to & from the Coast

The DEPOT Restaurant

38TH & L, ON THE SEAVIEW BEACH APPROACH
360-642-7880
DEPOT DECK NOW OPEN

FAMILIES WELCOME!

HUNGRY HARBOR GRILLE

313 Pacific Hwy, Downtown Long Beach, WA
360-642-5555 • www.hungryharbor.com
— NEW SUMMER HOURS —

DOWNTOWN WATERFRONT Inferno LOUNGE

Specialty Cocktails | House Infused Spirits | Local Brews | Small Plates

Incredible View, Outdoor Patio
Award-Winning Cocktails, House-Infused Spirits
Local Brews, Full Menu
N.Y. Style Pizza & Video Poker

77 11TH. ST. @ PIER 11, ASTORIA
(503)741 3401

BA BAKED ALASKA

DINING ROOM • PIZZERIA • BAR
THE ONLY THING WE OVERLOOK IS THE COLUMBIA RIVER

503.325.7414
bakedak.com
#1 12th Street, Astoria, OR

Place Your Ad Here!

SMOKEHOUSE BUTCHER BLOCK

MEAT, SMOKED MEAT, MARIO, GHOSTS and more!

LIKE US ON FACEBOOK FOR WEEKLY SPECIALS

125 9TH ST. ASTORIA OR.
(503)325-4744

Tour beautiful gardens from foothills to the shores

TILLAMOOK COUNTY — Tillamook County Master Gardeners Association’s 2018 Spade & Wade Garden Tour takes place 10 a.m. to 4 p.m. Saturday, July 21.

The tour features six beautiful, unique gardens in the Tillamook, South Prairie and Cape Meares area.

Visit a garden that includes a serene woodland alongside a vegetable garden worked the way a garden should be.

A master of bonsai will show off her collection and give demonstrations on how to create these gems. A garden is created for birds and bees — and humans — with a wide variety of ornamental shrubs and perennials as well as vegetable crops.

Take a river walk along a property with areas creating several different gardens: natural areas along the river, berry and vegetable gardens, areas for ornamentals and a greenhouse to get the plants started.

And travel to the coast.



COURTESY TILLAMOOK COUNTY MASTER GARDENERS ASSOCIATION
A variety of unique and successful gardens are on view during the Tillamook County Master Gardeners Association’s biannual Spade & Wade garden tours.

Set high on a hill overlooking the Pacific is an area planted to survive the ubiquitous deer and elk in the area, as well as to withstand the salt air from the ocean. And in the back is a garden with unusual plants for the area: hardy begonias, a prostrate coast redwood, winter hardy palms and a mature

Mexican Palm. Nearby, take a walk in a woodland through an old-growth forest with a variety of ferns and examples of nurse logs. For more information, email ksarnaker@gmail.com. Check out the Facebook page: facebook.com/tillamookmastergardeners/