



COURTESY CENTER DIAMOND

Have fun with family exploring quilt shops this summer.

Row by Row Junior is sew fun!

CANNON BEACH — “I learned to sew on a sewing machine, and I made this!”

That’s what hundreds of quilt shops across America and Canada hope to hear from kids age 6 to 14 in their communities this summer.

Local quilt shop proprietors like Center Diamond in Cannon Beach are welcoming kids to their shops Thursday, June 21, through Wednesday, Oct. 31, by participating in Row by Row Junior. It’s the kids version of the widely popular summertime travel event for quilt-making fans known as Row by Row Experience.

Kids visit shops in person and collect a free sewing pattern designed just for them to make. They’ll find encouragement and be inspired by the colorful, creative world of sewing right in their own hometown.

“We want to introduce kids to the intrinsic benefits of learning how to sew,” said Janet Lutz, creator of Row by Row Experience. “Making things on today’s modern sewing machines incorporates all the elements of STEM

education in an artful way that builds self-esteem and perseverance.”

When offered for the first time in 2017, Row by Row Junior was the largest initiative of its kind ever attempted in the sewing industry. This year, six new patterns and project ideas designed around the theme “Sew Musical” will appeal to kids and their families.

“Fostering intergenerational relationships and learning to sew at home is important to the Row by Row Junior program,” Lutz said.

Kids will enjoy the uniquely educational experience of visiting the shops. At home, families can find free tutorial support and activities online by visiting rowbyrowexperience.com.

Trail’s End Annual Judged Show open to all artists

GEARHART — The Trail’s End Art Association’s 68th Annual Judged Show is open to all artists. This year’s exhibition will run Saturday, Aug. 4, through Friday, Aug. 31.

Trail’s End President Jim Schoeffel said in a statement: “We are the oldest art association on the North Oregon Coast. We were organized in 1950 to foster the creation of original fine art in all media, and to provide art education and enjoyment opportunities to the community.

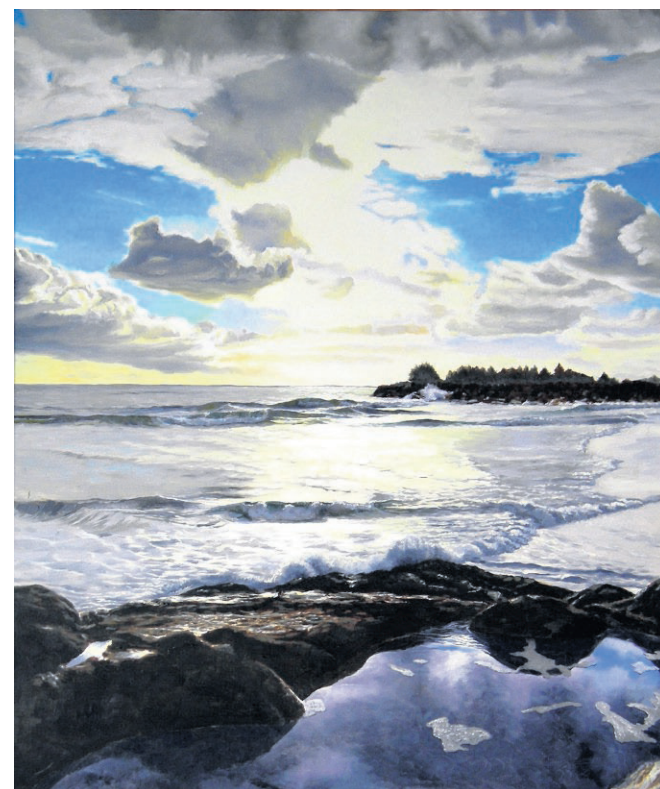
“While we have new monthly shows of members’ art at the gallery throughout the year, our Annual Judged Show is open to non-member artists as well,” she said. “This Annual Judged Show has gained in popularity each year, and we welcome all members of the surrounding communities to enter art.”

A gala reception is planned for 2 to 5 p.m. Saturday, Aug. 4. The Award Ceremony is scheduled for 3 p.m. This year’s prizes include \$100 for “Best in Show,” and a \$50 award for the “Mayor’s Award.” Prizes were also donated by McMenamin’s Gearhart Hotel and Dots ‘N Doodles Art Supply in Astoria.

Artists may submit their work on Sunday and Monday, July 29 and 30, between 10 a.m. and 3 p.m. Following the show, artists are asked to pick up their submissions Saturday or Sunday, Sept. 1 and 2, between 10 a.m. and 3 p.m. Since this is Labor Day weekend, artists may also pick up their submissions during the last week of August.

Age categories: Adults (over 16 years); youth (13 to 16); children (12 and under)

Artwork categories:
• Wet: oil, watercolor and other (includes ink, mono-print, lithograph, serigraph, sepia, etc.)



COURTESY TRAIL’S END ART ASSOCIATION

‘Waikiki Reflections,’ an oil painting by David Shipley, won “Best of Show” in Trail’s End Art Association’s Annual Judged Show last year.

- Dry: pastel and other (charcoal, colored pencil, graphite, etc.)
- Mixed media: collage, multi-media, Citrisolv, etc.
- Photograph and 3D
- Sculpture, fine jewelry, fiber arts, woodturning, fused glass, etc.

Artists may submit two pieces not to exceed 24 inches by 30 inches each (720 square inches). Should a piece exceed 720 sq. inches, the artist will be limited to entering one piece only.

Two-dimensional artwork must be professionally mounted and presented appropriately. No sawtooth hangers are allowed. All wires should be at least one inch below the top of the frame when hung.

Many artists become members of Trail’s End at the time of the Annual Judged Show. Trail’s End members

receive free entry and are charged only a 15-percent commission on artwork sold. Nonmembers are charged \$20 for the first submission, or two pieces for \$30, and a 30-percent commission to Trail’s End.

The 68th Annual Judged Show “Call for Art” form may be picked up at Trail’s End upon delivery of art for the show.

Trail’s End Art Gallery is located at 656 A St. in Gearhart. The phone number is 503-717-9458. The website is trailsendart.org. The “Call for Art” information is located on the website for reference.

The website also has listings for classes and other information of interest to members and those interested in becoming a new member. Plan now to be a part of this event and joining Trail’s End Art Association.

The Illahee Apartments



Downtown Astoria’s Most Respected Apartment Complex Since 1969.

1046 Grand Avenue
Astoria, OR 97103
503-325-2280

**LOOKING TO PURCHASE OR REFINANCE A HOME,
we are ready to help you with your mortgage needs**

Lance Allbritton

c:503-801-2400 o:503-338-5200



MOTTO
MORTGAGE
PROFESSIONALS