

Add a splash of color to your Memorial Day

Palette Puddlers hold three-day art show, sale

CANNON BEACH — The Palette Puddlers' annual Memorial Day weekend art show and sale will be held at the Cannon Beach Chamber of Commerce, 207 N. Spruce St., 10 a.m. to 5 p.m. Friday, May 25; Saturday, May 26; and Sunday, May 27.

We will also be open 10 a.m. to 3 p.m. Monday, May 28. Admission and refreshments are free.

In addition, our artists will provide demonstrations of their art styles throughout the weekend. It's possible you will find something "just created" to purchase.

The Palette Puddlers are a group of professional women artists, many



A painting by Suzanne King

of whom have painted together for years. Every Monday, rain or shine, they paint in a Cannon Beach locale while providing mutual support, critiquing artistic efforts, sharing the joy of creativity and just having a great time.

Over Memorial Day Weekend, they create an art gallery at the Visitor's Center to share and sell their original work.

Members Susan Bish, Judith Fredrikson, Mary Ann Gantenbein, Suzanne King, Jo Pomeroy-Crockett, Linda Gebhart, Debbie Loyd, Barbara Thacker and Jane McGeehan will show and sell original works of art, including watercolor, acrylics, mixed media and pastels.

Cards and print reproductions of their work are also available, as well as the bargain bin and bargain rack where framed and unframed paintings are available for a minimal price. Some of these artists show their work in other venues in the Northwest, and their paintings adorn homes throughout the state and nation.

Most of the Palette Puddlers display their work at trailsendart.org. If you are interested in a specific artist's work, go to the website, then click on "artists" on the left hand menu. That will take you to the artist list.

But better yet, come to Cannon Beach over Memorial Day weekend, meet the artists, watch them work and check out these reasonably priced paintings.



A painting by Jo Pomeroy-Crockett

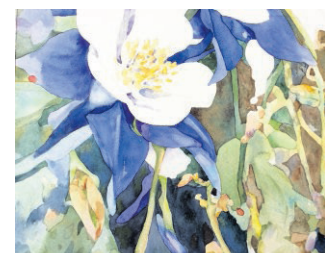
PHOTOS COURTESY PALETTE PUDDLERS



A painting by Mary Ann Gantenbein



A painting by Susan Bish



A painting by Judith Fredrikson

*Sou'Wester
Garden Club*

**plant
sale**

**Saturday,
May 26
9am-Noon
Seaside
Convention
Center**

Wide Variety of
Plants & Planters

Raffle and
Silent Auction