

China's new policy leads to increase in Seaside trash rates

Pickup rates rise 3.5 percent

By R.J. MARX
The Daily Astorian

SEASIDE — Policies in Asia are driving up costs for Seaside Recology customers.

Carl Peters, a general manager for the company, came to Seaside Monday night with a 3.5 percent solid waste collection increase.

The hike is driven by decisions by the Chinese government to cut payments for recycling deliveries, Peters said.

"It's a problem, and it's a big problem," he told the City Council. "It was a commodity. It had value. Now we're paying over double what it costs for disposing the trash."

China has gone from accepting 60 to 70 percent of the world's recycling down to about 20 percent, he said.

Twenty-four items were listed as no longer acceptable, including unsorted mixed paper, the largest component of recycling. "Ultimately they said, 'We don't want any of it anymore,'" he said.

Trade disputes have further limited the market. Chinese officials may turn away an entire cargo and charge shippers fines of up to \$50,000.

As a result, recyclers are facing issues finding personnel to sort conveyor lines



R.J. Marx/The Daily Astorian

Rates for pickup in Seaside are increasing as a result of activity overseas.

and must slow down belts to remove more trash. Inventory that used to be accepted is "not so easy to ship," Peters said.

Examples of the impact for residential curbside service show a 32-gallon weekly cart at \$16.27 per month will increase to \$16.54 per month, a difference of 57 cents. A 90-gallon cart weekly cart at \$27.12 per month will increase to \$28.07 per month, a difference of 95 cents.

While Seaside customers are seeing a rate hike, it's less onerous than some changes instituted in cities throughout the state, Peters

said. Some are passing surcharges on to customers, adding price increases of 10 to 15 percent or suspending service altogether. "That's what they needed to do, but I won't pass judgment on it," he said. "We aren't going to do that, but it is more difficult and it is more expensive."

City councilors asked Peters for details on lawn debris and glass recycling. Currently, the options are unavailable to Seaside customers.

The city could designate a recycling center, drop-off capability in Astoria or home recycling.

All come with a fee. "It can be done," he said. "I would guess on the inexpensive side, you can take it up and dump it at the recycling center in Astoria with a 3 percent increase — about 50 cents a month. But that's not a lot of service."

Home lawn debris recycling service might increase between \$2 or \$3 a month, he added. "We could have a conversation about that," he said. "The economy of scale makes a lot of difference."

The City Council unanimously approved a resolution adjusting the solid waste collection rates, effective July 1.

Woman gets 11 years for home invasion

By NATALIE ST. JOHN
Chinook Observer

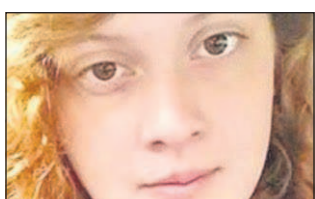
SOUTH BEND, Wash. — A young woman who shot up her grandmother's house will spend nearly 11 years in prison.

Sincer-A Marie Nerton, 19, of Naselle, pleaded guilty Friday to first-degree robbery, first-degree burglary, first-degree kidnapping, theft of a firearm and second-degree theft. Her co-conspirator, Joshua A. Turner, 26, of Naselle, has pleaded not guilty and is awaiting trial.

Pacific County Prosecutor Mark McClain asked the judge to give Nerton the maximum penalty despite her lack of prior criminal history.

"To do otherwise would simply place our community in danger," McClain said.

Nerton and Turner allegedly raided her grandmother's Bay Center home in March. According to probable cause statements, the pair burst into the 52-year-old woman's house around 4 a.m., armed with several guns. After shooting a couple of rounds into the ceiling, they allegedly cuffed Nerton's grandmother to her girlfriend. They ordered a male guest into the bedroom at gunpoint before getting high on meth and looting the house. The pair reportedly took about



Sincer-A Marie Nerton

\$2,000 in cash, firearms, jewelry, a Visa card and the victims' phones.

No one was hurt, but Turner and Nerton allegedly left the house riddled with bullet holes and terrified the victims. The couple released the women before driving away in a car with swapped license plates. The grandmother called 911 from a neighbor's home.

Records obtained through a public disclosure request show that the first Pacific County Sheriff's deputies to respond did not arrive until about 90

minutes after the incident, because no one was on duty when it occurred.

The couple fled to Coos County in Oregon, where they were arrested separately. Police found Nerton after she asked for a ride in a local online community.

During the robbery, Nerton was reportedly highly intoxicated, with needle marks all over her arms. Her Oregon mugshot showed a thin, disheveled-looking young woman, but in a recent court appearance, she appeared to be healthier. Nerton had gained

weight, her skin was clear, and her demeanor was calm and polite.

Nerton did not speak during her sentencing, according to McClain. However, he said, her grandmother asked him to let Nerton know that she still loves her.

Nerton will be required to undergo drug treatment and three years of post-release probation.

"Nerton also agreed to participate in locating the firearms in this case to ensure the firearms don't fall into the wrong hands," McClain said.

WANTED
Alder and Maple Saw Logs & Standing Timber
Northwest Hardwoods • Longview, WA
Contact: John Anderson • 360-269-2500

THURSDAY, MAY 17
COLUMBIA FORUM PRESENTS

THE ARCHAEOLOGY OF LIGHT

Join us for a visual presentation of the science and art of light, manipulated as a 3D medium. Discover through an artist's eye the natural wonder and beauty of light in Oregon, in myth and in Aztec and Mayan prehistoric cultures.



Presenter:
Jill Mulholland PhD
University Professor & Manager of the International Association of Lighting Designers

Jill is a part time light artist. She has practiced, taught, researched, published, designed and built with light in many manifestations.

She has a B.A. in Maya archaeology from Rutgers College, learned light as a three-dimensional art form in the theater, and has a master's degree in interiors from the University of Oregon. She completed a PhD. in architecture from Texas A&M University, where she taught design studios in the architecture and visualization departments.

Jill's work has come full circle back to archaeology, forming her research interests and the inspiration for the book she plans to write called "The Archaeology of Light."

TO ATTEND:

Appetizers will be available at 6 p.m. Dinner is served at 6:30 p.m., provided by Baked Alaska (\$25 for members, \$35 for non-members)

The speaker will begin after the dinner service is complete and the non-dinner members and guests (program only guests: \$10 per person) of the audience take their seats.

FORUM TO BE HELD AT:

CMH Community Center at 2021 Exchange St., Astoria

FOR RESERVATIONS OR TO BE ADDED TO THE COLUMBIA FORUM CONTACT LIST:
Contact Holly Larkins at 503-325-3211x227 or forum@dailyastorian.com

RSVP BY MAY 14

ColumbiaForum

COLUMBIA FORUM IS SPONSORED BY:

THE DAILY ASTORIAN ■ CRAFT3 ■ OSU SEAFOOD LABORATORY ■ KMUN-FM CANNERY PIER HOTEL & SPA

Astoria doctor reprimanded by state Medical Board

By EDWARD STRATTON
The Daily Astorian

Dr. Sangkun Park, a local physician for more than 20 years, was reprimanded by the state Medical Board for unprofessional conduct after entering into a property transaction with a patient.

The Medical Board in April fined Park \$10,000, required him to take courses on professionalism and ethics, and barred him from entering business contracts with current and recent patients and their immediate families.

A complaint was filed alleging unprofessional conduct by Park in 2015 with a patient suffering from depression after the death of his wife. After physically examining the patient and requesting further testing, Park signed an agreement to buy the patient's house,

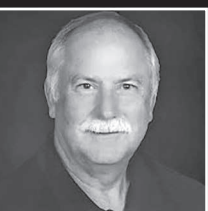
according to a stipulated order signed by Park and the Medical Board. The patient's daughter later expressed concerns about his possible dementia, lack of energy, mood swings and anxiety attacks, the order said.

Park "states that he never wrote a payment check to Patient A and asserts that he had no genuine interest in purchasing the property — that he only signed the agreement to give Patient A peace of mind," the order said.

But the Medical Board faulted Park for failing to recognize a conflict of interest and violating his position of trust by "entering into a financial transaction with an elderly, emotionally distraught patient suffering from depression and possibly early stage dementia."

Park could not immediately be reached for comment.

Consult a PROFESSIONAL



Steve Putman

Medicare Products

503-440-1076

Licensed in Oregon and Washington

putmanagency@gmail.com

Q: Is Medicare Supplement Plan F going away?

A: There has been a lot of confusion on this. Anyone eligible for Medicare Part A before January 1, 2020, can enroll in Plan F after 2020 and can keep their plans as long as they choose.



LEO FINZI

AstoriasBest.com

Microsoft REGISTERED Refurbisher

We transfer your photos, documents, etc. to your new computer.

M-F 10-6 Sat. 11-4
77 11th Street, Suite H
Astoria, OR
503-325-2300

Q: How do I get the Windows 10 April 2018 Update now?

A: Visit the website: <https://www.microsoft.com/en-us/software-download/windows10>

Click on the blue "Update Now" rectangle in the upper half of the page.

Email me at Leo@AstoriasBest.com, to receive an email you can simply click on to get the update.

To update several computers, click on the "Download tool now" rectangle, and install the update tool to a USB.

If you were thinking of getting a tune up, now is a good time. We include the April 2018 update with your tune up.



JEFFREY M. LEINASSAR
DMD, FAGD



503/325-0310
1414 MARINE DRIVE,
ASTORIA
www.smileastoria.com

Q: What should I use to clean my baby's teeth?

A: Remember baby's teeth are not only important but part of their health and development. Cleaning baby's teeth can be done by gauze, a finger swipe, or a small brush. Make it quick and fun!! Remember that a night-time bottle with milk has lactose (milk sugar) and juice has fructose or sucrose (sugar) and if it sits on teeth day after day problems are going to develop. Baby teeth are small with thin enamel so they are important to keep clean.



ASTORIA CHIROPRACTIC
Barry Sears, D.C.

503-325-3311
2935 Marine Drive
Astoria, Oregon

Q: Are chiropractors real doctors?

A: Yes, like all other doctors, we undergo four years of graduate school including two years of life science and 2 years of clinical sciences with an internship. The degree conferred after successful completion of schooling is a D.C. or DOCTOR OF CHIROPRACTIC. We are also called chiropractic physicians. Yearly continuing education is required to keep skills up. Our approach is to find the simplest solution with the fewest tests. We are happy to accept new patients.