

Kid Scoop

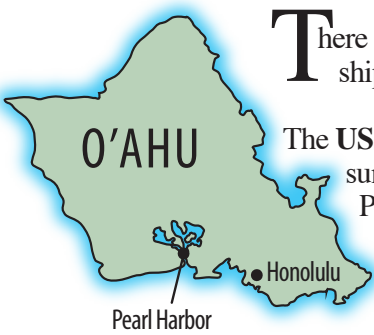
THE AWARD-WINNING PRINT & ONLINE FAMILY FEATURE



© 2018 by Vicki Whiting, Editor Jeff Schinkel, Graphics Vol. 34, No. 24

MEMORIAL DAY

USS Arizona and the Battleship Missouri



There is a sunken U.S. Navy ship in Pearl Harbor, Hawaii.

The USS *Arizona* battleship was sunk when Japan attacked Pearl Harbor on Dec. 7, 1941. The attack caused the U.S. to join the fighting in World War II.

More than 1,000 sailors and marines died that day. Many of them remain with their ship under the harbor. And many Pearl Harbor survivors choose to be placed with their fellow crew members when they die.

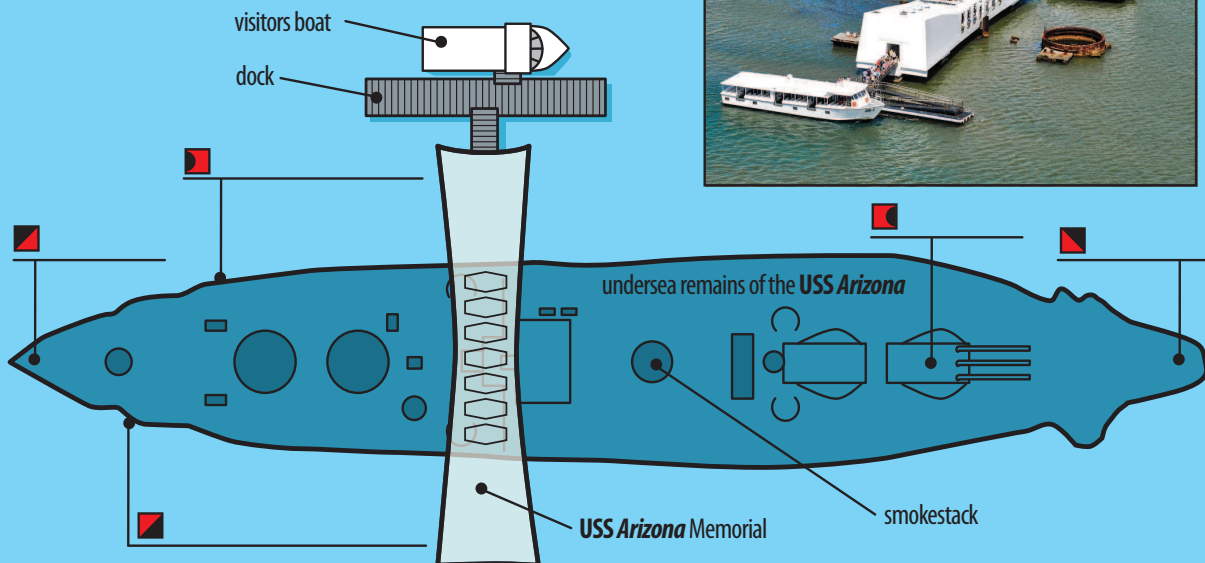
From a building constructed above the water, visitors can see the USS *Arizona* under the harbor's clear ocean waters. This is the USS *Arizona* Memorial, which opened in 1962.



Talk Like a Sailor

Parts of a ship have particular names. If you know the names, you can talk about ships like a sailor! Use the code below to label the diagram at right.

- **stern:** the back end of a ship
- **bow:** the front of a ship
- **port side:** the left side of a ship or boat
- **starboard side:** the right side of a ship or boat
- **turret:** on a battleship, a rotating platform for large guns

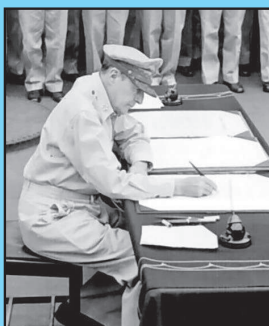


Battleship Missouri

Replace the missing words.



Not far from the USS *Arizona* Memorial, the Battleship *Missouri* is open for _____. Aboard this ship, Japan and the United States and their Allies signed _____ to end World War II.



Gen. MacArthur signs papers ending World War II aboard the USS *Missouri*.

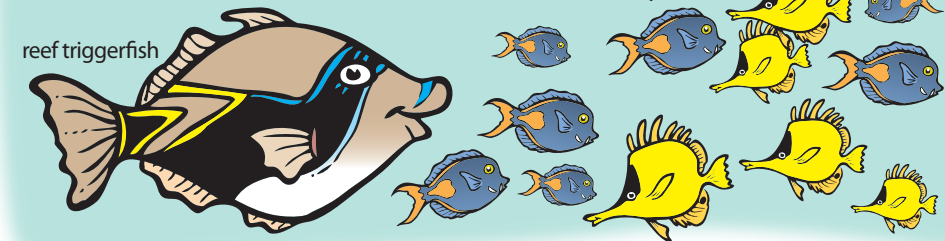
General Douglas MacArthur led the ceremony and he was the last person to _____ the "Instruments of Surrender." He concluded the ceremony by saying: "Let us pray that _____ be now restored to the _____, and that God will preserve it always. These proceedings are closed!" And with those words, World War II was officially over.

Congress declared Memorial Day a national holiday to remember the people who died in American wars. It is observed on the last Monday in May. What year did Memorial Day officially begin? Color in the even-numbered squares to reveal the answer.

3	9	7	5	9	1	7	3	5	5	1	3	1
5	4	9	2	8	4	5	2	6	2	5	8	7
9	8	5	8	3	8	9	1	3	6	5	4	7
3	6	3	4	2	6	9	3	5	8	3	2	3
7	8	1	5	1	8	5	7	1	4	9	8	1
5	2	9	3	5	2	1	9	5	4	7	6	5
7	5	7	7	9	5	3	1	5	7	5	1	9

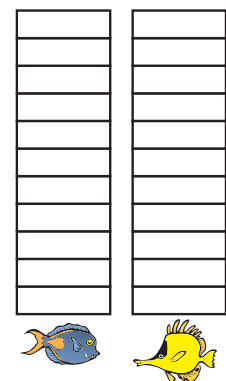
The Little Fish with a BIG Name

In the tropical waters of Hawaii, a huge variety of colorful fish live among the coral reefs. The reef triggerfish isn't very big, but it has a name in Hawaiian that's VERY long: *humuhumunukunukuapua'a!* You pronounce it: *who-moo-who-moo-noo-koo-noo-koo-ah-pooah-ah.*



Graph It!

Color a space on this graph for each fish you count. Which fish appears most?



Extra! Extra! Patriotic Collage

Look through today's newspaper for pictures and words that show love of your country. Cut these out and glue onto a sheet of paper to make as Patriotic Collage.

Standards Link: Language Arts: Identify synonyms in reading.

Kid Scoop Puzzler

In 1958, President Dwight Eisenhower signed a law that started fundraising for the USS *Arizona* Memorial. Their goal was to raise \$500,000, but only \$155,000 had been raised by 1960.

A rock and roll legend solved the problem. He held a concert in Hawaii that raised over \$60,000. But the concert raised more than money – it made people across the country aware of the USS *Arizona* and the drive to build a memorial. Donations started coming in and the full \$500,000 was raised by September, 1961.

Circle every other letter to reveal this rock legend's name:
O E G L M V T I C S Y P N R K E B S V L U E S Y
E _____

FROM THE Kid Scoop LESSON LIBRARY

Memory Game

Ask a friend to study a picture in the newspaper for one minute. Then cover the picture and have your friend write down as many details as they can remember. Now reverse roles and you try.

Standards Link: Reading Comprehension: Follow simple written directions.

Kid Scoop Word Search

- MEMORIAL
- MISSOURI
- ARIZONA
- HARBOR
- HAWAII
- PEARL
- OCEAN
- ELVIS
- PEACE
- MONEY
- SHIP
- NAVY
- SUNK
- WARS
- CREW

Find the words by looking up, down, backwards, forwards, sideways and diagonally.

L	I	R	U	O	S	S	I	M	O
N	A	H	A	W	A	I	I	A	P
T	I	I	A	O	P	N	A	I	L
P	E	A	R	R	R	E	H	K	L
Y	L	M	I	O	B	S	A	R	E
E	V	M	Z	W	M	O	A	C	W
N	I	A	O	O	A	E	R	R	E
O	S	U	N	K	P	R	M	I	R
M	A	N	A	E	C	O	S	L	C

Standards Link: Letter sequencing. Recognized identical words. Skim and scan reading. Recall spelling patterns.

Thanks to the following businesses for supporting Newspapers In Education

- Appelo Archives Center
- Hees Enterprises Inc.
- Quackenbush Builders Inc.
- Bridgewater Bistro
- Clatsop Behavioral Healthcare
- Lazerquick Seaside/Astoria
- Premium Adjustable Beds
- Suzanne Elise Assisted Living
- Moberg & Rust, Attorneys at Law
- Lower Columbia Clinic
- Ship Inn
- Rock Bauer Landscapes
- Diane Barendse, CPA
- Hammond Kennels
- Bergerson Construction
- Josephson's Smokehouse
- U Street Pub and Eatery

Emerald Heights
APARTMENTS
503-325-8221

Certified **ZENTANGLE** Teacher
106 3rd St. ASTORIA
503.440.9788

Quality Work at Affordable Rates
JJ ELECTRIC SERVICE
503-739-7145
1616 S. Roosevelt Dr., Seaside, OR
www.jjelectricservice.com

SUBWAY
11 W. Marine Dr. | Astoria | 503-325-3322

Columbia Veterinary Hospital
576 31st Street • Astoria
503-325-2250

The Garibaldi Museum
Maritime History
112 Garibaldi Ave.
Garibaldi, Ore.
(503) 322-8411

Astoria Forest Products, LLC
10 Pier 1 • Suite 301
Astoria, Oregon 97103

KOA Astoria, Warrenton & Seaside
1100 Northwest Ridge Road
Hammond, OR 97121
reservations 800-562-8506
info 503-861-2606

Northwest West Inc.
Income Tax Preparation
762 Avenue G • Seaside, OR 97138
503-738-3480

LES SCHWAB WARRENTON 861-3252
1167 SE Marlin
McCALL TIRE CENTER SEASIDE 738-8243
2155 S. Roosevelt

Morgan Civil Engineering
PO Box 358 • Manzanita
503-368-6186

JOE'S Mobil 1701 Marine Dr.
Astoria, OR
503-325-7812

Classic BODYWORKS 503.325.0411
AND TOWING 34747 Hwy 101 Bus.
ASTORIA

LEWIS & CLARK
TIMBERLANDS™
MANAGED BY GREENWOOD RESOURCES*

RE/MAX
River & Sea

Teerin Bros. LAND & TIMBER
ASTORIA | 503-556-0410

Sunspire Health
Astoria Pointe
The Rosebriar
263 W Exchange • Astoria | (877) 435-7790

NORTHWEST READY MIX
950 Olney Ave • Astoria
503-325-3562

STREET FOURTEEN CAFE 1410 COMMERCIAL STREET
ASTORIA
503-325-5511

DA YANG Great Ocean
Da Yang Seafoods LTD.

La Cabana D Raya
MEXICAN RESTAURANT
35431 HWY 101 BUS • ASTORIA • 503-325-3656

325 Marlin Avenue
WARRENTON
503-861-1621
Bayshore Animal Hospital

WORKSOURCE OREGON
NORTHWEST OREGON EMPLOYMENT DEPT.
450 MARINE DR ASTORIA 503-325-4821

Home Furnishings
1033 Commercial Street
Astoria, Oregon 97103
(503) 325-5620

COLUMBIA RIVER BAR PILOTS
ESTABLISHED 1986
Providing safe passage since 1846