

# Seaside FIRST SATURDAY

## ART WALK

April 7  
5 to 7 p.m.

SEASIDE — Celebrating 14 years this year, the next Seaside First Saturday Art Walk takes place 5 to 7 p.m. April 7. Visitors meet artists, view artist demonstrations and enjoy live music performances. This free event is about checking out art in the galleries and boutiques in the historic Gilbert District of downtown Seaside.

### SunRose Gallery 606 Broadway St.

Spring is celebrated at SunRose this month! Featured are colorful new china mosaic flowerpots by Cathy Tippin, stained glass sun catchers by Patty Thurlby and new millifiori (million flower) earrings by Charlotte Dube. New to Astoria, "O Pato eo Peixe" will be performing Brazilian bossa nova classics and light appetizers will be served.

### Moxie Shine 609 Broadway St.

Moxie features exclusive jewelry and art where everything is handmade. As a member of the Fair Trade Federation, Moxie demonstrates a genial and equitable approach to conducting business.

### Bev Drew Kindley Pop-Up Gallery 608 Broadway St.

An Oregon artist, Bev Drew Kindley often paints impressionistic landscapes

## SINGLE MALT Q-TET LIVE AT THE OREGON COAST

BRENT FOLLIS, JIMMIE HERROD, DAN FAEHNLE, PHIL BAKER & OTHER SPECIAL GUESTS



APRIL 7TH, 2018

DOORS OPEN AT 7:00PM  
TICKETS AVAILABLE AT WWW.TICKETMOTO.COM  
NCRD PERFORMING ARTS CENTER

36155 9th St., Nehalem, OR 97131  
General Admission Presale \$23 (plus ticket fee)  
Reserved Seating \$28 (plus ticket fee)  
At the Door \$28 (plus ticket fee)



Lea Barozzi's "Changeling Girl," on display at the Starry Night Inn



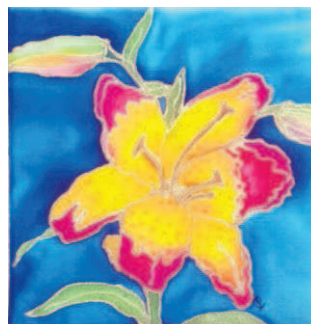
"Blossom," by Robin Montero, on view at SunRose Gallery

"en plein air." Searching for the brightness and joy in every season, inspired by the light and energy found in nature, the artist experiments to transform the excitement felt into colors, shapes, movement and brushstrokes. For April, the Bev Drew Kindley Pop-Up Studio and Gallery is sponsored by the Gilbert Block Building and Fairweather Gallery.

### Fairweather House &



A painting of an eagle at Blue Bond Studio and Gallery



"Lily," a painting on silk by Patti Isaacs, on display at Fairweather House & Gallery

### Gallery 612 Broadway St.

Fairweather House & Gallery offers an exploration between the study of botany and fine art. The opening reception for "Observing Botany," the gallery's April exhibition, presents original artwork in watercolor, graphite, colored pencil and pen-and-ink and the exploration of the many styles, forms and approaches unique to botanical illustration. Region-



PHOTOS COURTESY DENISE FAIRWEATHER

### Westport Winery

al artists will be on hand at the exhibit to answer questions, provide interesting facts or anecdotes.

Featured artists are Nick Brakel, Lori Bedard, Diane Copenhaver, Penelope Culbertson and JoAnn Pari-Mueller. In addition, the gallery introduces Patti Isaacs, an artist who paints on silk.

Seaside/Gearhart naturalist and biologist Neal Maine will speak about the ecology of the coastal habitat at 6 p.m. Artist Carolyn Macpherson will offer a Seaside Painting LIVE episode.

Free fused glass art demonstration by Lori Bedard. Live music by Shirley 88.

### Art in the Loft Gallery at Beach Books

616 Broadway St.

Featuring the Seaside ukulele group of eight to 10 players who will be at the bookstore playing live music throughout the evening. This group plays the ukulele while jamming with others playing the harmonica. They learn together, laugh together and create beautiful music together.

### Katharine Stewart, Ancient Health and Healing

10-B Holladay Drive

Featuring the "Art of Healing." Katharine Stewart graduated from the Santa Barbara College of Oriental Medicine, was one of the founding faculty mem-

bers of the Phoenix Institute of Herbal Medicine and Acupuncture, where she also served as Clinic Dean, Acupuncture Chair and Clinical Supervisor. She believes that healing is an art, and there are many paths to achieving good health. Acupuncture can be one of many powerful healing modalities, and works beautifully with them all.

### The Whet Spot

12 N. Holladay Drive

The Whet Spot offers a relaxed friendly, adults-only atmosphere, where patrons can catch up with old friends while enjoying craft beers, ciders and wines. No minors are permitted at any time. Featuring the art of pouring with 20 rotating taps for craft beers and ciders, a Growler filling station and offering wines by the glass.

### Westport Winery Seaside

810 Broadway St.

As part of this evening of art, Westport will be featuring its 34 unique labels featuring original art by the family and friends. At the same time, they will offer free olive oil and balsamic vinegar tasting from the Olivelle Company whose motto is "The Art of Flavor." Filled with harmonious connections to the sea, Westport Winery is a coast traveler's dream.

### Blue Bond Studio and Gallery

417 S. Holladay Drive

Amazing paintings by artist Blue Bond done in oil on canvas. Animals, people, still life and wonderful scenery pictures will delight Art Walk guests. Blue Bond is a local artist who paints and teaches in oil and acrylic to novices and experienced painters alike.

### Starry Night Inn

811 First Ave.

An art motel by the sea located in a Victorian villa where each room features art from nine Portland artists. This motel offers artist residencies. The art at the motel is curated by Chris Haberman. The motel is featuring the work of Ace Troy, Ursula Barton, Judy Haas, Lea Barozzi, Gary Houston, Tom Healy and Chris Haberman.

Find additional original art during the day at Hold Fast Gallery, 611 Broadway St.; Dough Dough Bakery, 8 North Holladay Drive, Seaside Antique Mall, 726 Broadway St.; and Seaside Coffee House, 3 N. Holladay Drive.

### Crossword Answers

F	A	R	F	R	O	M		P	C	B	S		P	U	N	I	T	I	V	E		
A	L	A	B	A	M	A		O	H	O	H		A	V	E	M	A	R	I	A		
K	I	D	I	N	A	C	Y	S	T	O	R	E		P	A	E	X	P	R	E	S	S
E	V	A		I	N	S	I	P	I	D		M	C	A	T		G	N	A	T		
S	E	R	F					N	I	C	E	D	A	Y			G	E	E	S		
		S	U	I	T	S		E	E	L	E	D		P	L	O	T					
		C	R	E	A	M			L	O	C	A	L	R	I	S	S	I	A	N		
A	L	L	H	S	O	N	D	E	C	K		I	M	B	E	A	T		A	D	O	
T	I	E	I	N		R	O	A	N		E	S	S	I	E		M	A	T			
T	V	M	A		B	A	C	K	L	O	T		A	S	A		W	P	A			
H	E	M		Y	A	N	K	E	E	D	O	O	D	L	E	D	Y		O	T	S	
E	W	E		E	R	A		S	T	R	A	I	T	S		A	M	I	E			
B	I	S		A	S	S	T	S		O	C	H	O		B	R	A	V	A			
A	T	E		H	O	A	G	I	E		H	U	R	R	I	C	A	N	E	S	Y	
T	H	E	A	M	A	Z	I	N	G	R	I		S	E	R	U	M					
		P	A	P	I		G	O	G	E	T		S	E	P	I	A					
		G	M	E	N		D	I	S	H	R	A	G			S	C	A	R			
P	A	I	R		W	E	A	N		T	O	B	A	C	C	O		C	U	E		
E	L	A	S	T	I	C	B	S		A	F	I	S	H	C	A	L	L	E	D	W	A
C	O	M	O	E	S	T	A		D	I	C	E		E	R	E	A	D	E	R		
S	P	I	N	S	H	O	T		S	T	A	T		D	E	S	C	E	N	D		