

Gearhart

FIRST SATURDAY

ART WALK

March

3

2 to 5 p.m.

GEARHART — The first Gearhart First Saturday Art Walk of 2018 takes place 2 to 5 p.m. March 3.

A Great Gallery

576 Pacific Way
503-709-2840
agreatgallery.com

Welcome spring! A Great Gallery has been busy for the past couple of months. We've been closed to remodel: new paint, more lighting and lots of new merchandise! Come see what's new to kick off the Gearhart Art Walk season and enjoy refreshments. Each month our refreshments will theme a different country from around the world. This month's theme will be Italian, "Ci vediamo presto."

Trails End Art Association

656 A St.
503-717-9458
trailsendart.org

With spring just around the corner we welcome any sign of it, including fine art to inspire us at Trail's End Gallery.

During the first Gearhart Art Walk of the year, the association will feature Bill Logan, a new member to Trail's End. The show opening will include a reception in Logan's honor 2 to 5 p.m. Saturday, March 3. In addition to our featured artist will be new paintings, photographs and three-di-

mensional work by other member artists. The gallery is located at 656 A St., one block south of Pacific Way.

Logan hails from Massillon, Ohio, and now lives in Astoria. In high school, he began painting with oil on large plywood sheets. His artwork took a hiatus while he earned a living as a career journeyman lineman. Now Logan has returned to his passion of painting.

He uses a graphic tablet to create abstract drawings, combining computer tools with his brushes. He selects his colors and blends them on the computer screen as one would traditional materials. "It is my hope that you receive as much joy in viewing my work as I do in creating it," he said.

Trail's End welcomes newcomers to the art world as well as seasoned ones. We have a judged show every year and a new show of member artists each month.

For more information, drop by or call during winter hours 11 a.m. to 3 p.m. Wednesday through Sunday. The number is 503-717-9458.

Because it was "the little red schoolhouse" in the early 1900s, the gallery contains two classrooms with an office in between. One side was



PHOTOS COURTESY

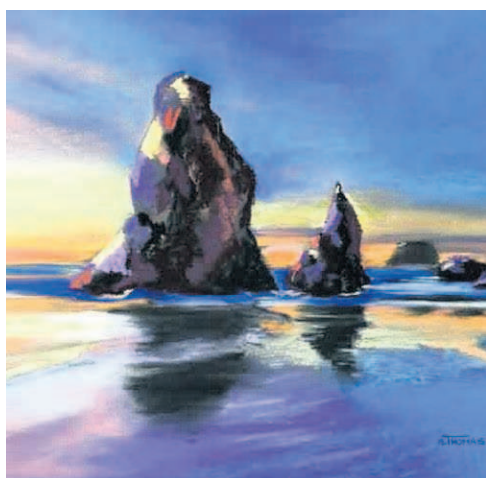
TRAIL'S END ART ASSOCIATION

ABOVE: "Cityscape" RIGHT: "Circles" (both by Bill Logan)



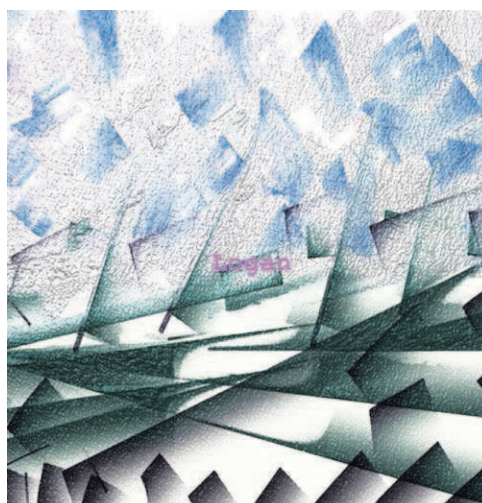
converted to a gallery; the other became a classroom used for open studio use for members and drop-ins who pay a minimal fee, classes and workshops. The office is now a lobby displaying many smaller items and prints.

For more information, drop by or call during winter hours, 11 a.m. to 3 p.m. Wednesday through Sunday. Our number is 503-717-9458.



COURTESY SUSAN THOMAS

"Coastal Rocks" by Susan Thomas, on view at A Great Gallery



COURTESY TRAIL'S END ART ASSOCIATION

"Industrial Winter" by Bill Logan

Crossword Answers

F	I	F	E	S	W	A	T	S	M	A	K	E	S	C	A	B		
E	R	R	O	R	K	E	Y	U	P	I	R	A	T	E	O	X	O	
G	E	O	R	G	I	A	N	E	R	A	K	E	S	H	A	B	I	G
B	E	N	T	O	N	T	S	K	N	A	T	H	A	N	H	A	L	E
E	B	A	Y	M	U	S	H	W	A	D	E	I	N	E	L	L	Y	
R	I	G	P	I	S	T	A	C	H	I	O	S	A	O	R	T	A	S
T	E	E	O	D	E	A	H	A	L	F	L	U	B					
			P	T	A	G	R	A	T	E	K	I	L	T	J	E	W	
W	A	S	S	A	I	L	E	N	I	D	O	R	E	S	A	S	H	
E	Y	E	S	T	R	A	I	N	F	I	G	M	E	N	T	R	C	A
R	E	C	T	O	C	H	E	R	T	U	B	A	A	S	F	O	R	
E	A	R	C	D	T	O	W	E	R	S	U	R	F	N	T	U	R	F
O	Y	E	H	E	A	P	C	O	L	T	M	O	D	E	L	T	S	
N	E	T	I	T	I	S	A	D	I	O	S	R	I	M				
			S	P	E	D	N	E	E	O	V	E	N	S	L	R		
A	C	C	E	S	S	A	S	T	O	U	N	D	I	N	G	C	U	E
D	O	U	R	T	O	P	T	E	N	I	A	M	S	T	H	R	U	
D	A	D	B	L	A	S	T	E	D	B	C	C	I	C	E	M	E	N
O	C	D	I	B	S	E	N	C	R	E	A	M	C	H	E	E	S	E
N	H	L	A	L	I	S	T	H	E	N	N	A	A	N	A	I	S	
S	K	Y	M	E	E	T	S	I	D	E	S	T	D	A	R	N		

The Franklin Apartments



Providing Elegance & Efficiency to Downtown Astoria for Over 100 Years

1432 Franklin Avenue
Easom Property Management, Inc.



503-325-5678