

EYES OF THE STORM // PHOTOS FROM AROUND THE REGION



ALEX PAJUNAS

A pair of cork elk trunks snapped during the storm on the grounds of the Flavel House. The trees, listed as Oregon Heritage Trees, were planted before the construction of the iconic landmark.



DAMIAN MULINIX

Sandra Eddy's RV, which she used to move to the Peninsula two years prior to the storm, was smashed by a large tree that missed her house by only about 6 feet.



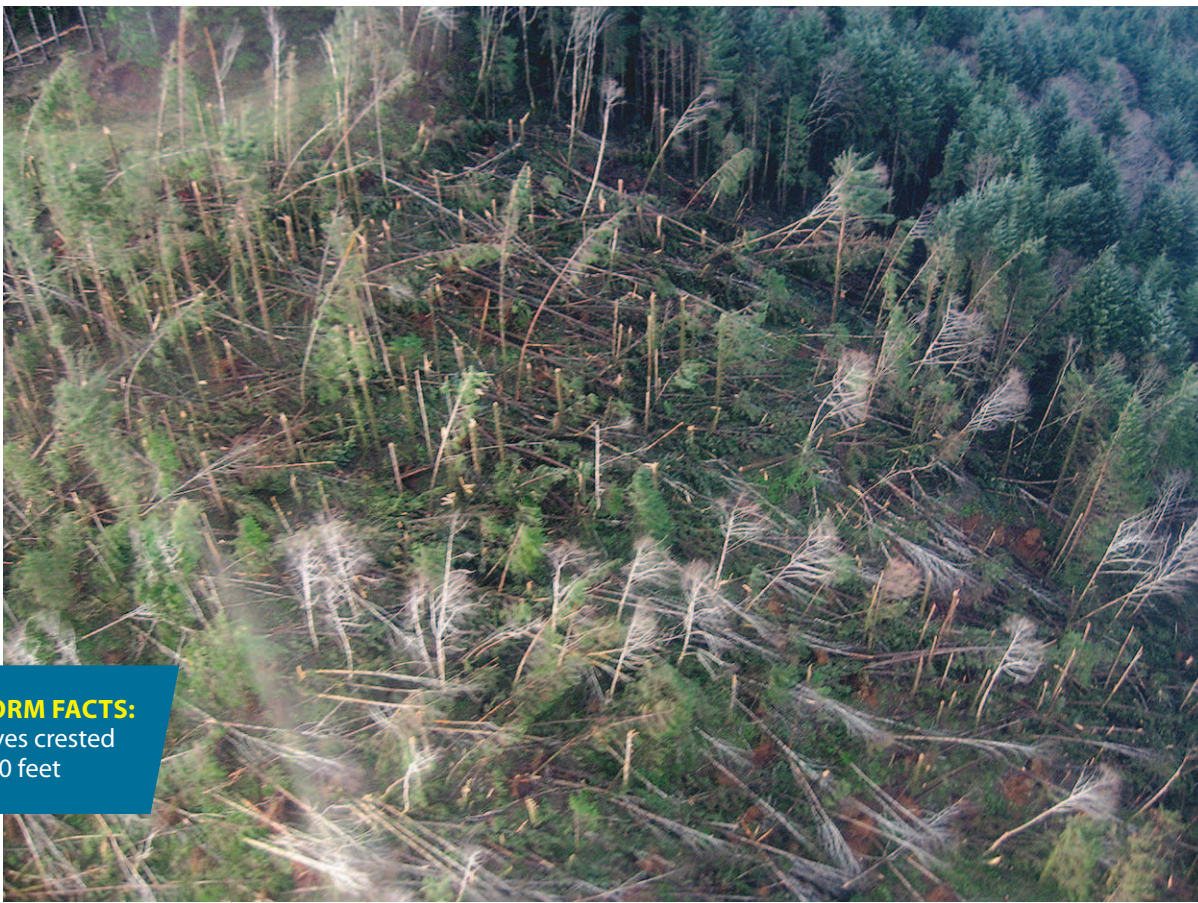
DAMIAN MULINIX

While some of the biggest gusts rocked the Peninsula, not everyone took shelter inside. Abigail Goodwin and her two sisters took turns seeing how long they could hold onto a bed sheet blown by the wind at their home in Ocean Park.



DAMIAN MULINIX

An unidentified man pulls a four-light stoplight to the sidewalk after it was blown off its pole at the intersection in downtown Ilwaco.



MATEUSEZ PERKOWSKI

Wind gusts snapped acres of trees in Clatsop and Tillamook counties.



A footbridge at 344th in Surfside that had been condemned was destroyed by high winds December 3.



ALEX PAJUNAS

The Capt. E.V. Nielsen, a fishing boat docked in the Warrenton Marina, rests partially submerged.

STORM FACTS:
Waves crested at 70 feet

Service
Remodels
Residential
Commercial
New Construction
Lighting Retrofits

**BOGH
ELECTRIC**

Tony Bogh ⚡ Owner
503.325.5000
CCB#188326



Tony Bogh and Jean Bogh

9 1 1TM

THE NUMBER TO KNOW

Medix Ambulance Service would like to thank the dispatch teams at Medix, Astoria, Seaside and Pacific County, WA 9-1-1 centers for their hard work.

The best way to help 9-1-1 dispatchers help you is by remembering to:

REMAIN CALM, BE PREPARED

- Try to stay calm, give information and follow all instructions.
- Professional call-takers are trained to get information from you. Listen very carefully and answer as concisely as possible.
- Remember that even if the dispatcher is still asking questions or giving instructions, help is on the way.
- You can save a life! Do not hang up until the call-taker does.



NATIONALLY RECOGNIZED,
LOCALLY OWNED