

110 Announcements



New Patient Special

Dr. Stephanie White is inviting you to her practice to receive the highest quality care for your dental needs.

Mention this Ad and receive a **Free Electric Toothbrush!**

Schedule Today!!

503-738-9273
3965 HWY 101 N.
Gearhart, OR 97138
www.gearhartdentistry.com
Email:
frontdesk@gearhartdentistry.com

Special applies to new patients that receive a comprehensive exam.
Special expires 12/31/17

204 Automobiles

2003 Ford Explorer XLT
Excellent condition
165,000 miles
\$4000/obo
360-665-2336 or
360-244-1397

504 Homes for Sale

92159 Clover Road
Astoria, OR
2/bd 1/ba
Fireplace, large backyard,
water frontage.
\$130,000 firm
Lots of potential.
(503)325-2068

525 Commercial Property

Astoria: 3925 Abbey Lane,
800 SF. Starting at \$.50/SF
(503)440-6945

Must See

Commercial Sports Bar &
Restaurant For Sale
Newer roof & parking lot
Seller financing
Easy access off Highway 101
Monthly sign lease income
5 lottery machines \$525,000.
MLS# 17579359, Kip Running,
See at: 2490 N. Highway 101,
Seaside, OR, 503-799-2488
www.runningre.com
kip@runningre.com

GARAGE SALES are a big success when advertised in the classified ads!

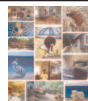
604 Apartments

Astoria, 222 Alameda. 1 bedroom, \$700-\$750+deposit. Hot water included. No pets/smoking. References.
503-680-4210

Seaside: Riverview, 2 bedroom, 1 bath
Washer/dryer, carport.
\$875 per month+deposit.
DNC Rental Properties
(503)791-2855

613 Houses

3/bd, 2/ba, 2100sqft.
Riverfront in Hammond
Single-car garage.
\$1750/mo(tenant pays utilities)
No pets/smoking
503-861-1494



Artistic Cannon Beach
Vacation Home available
for longer-term rental.

Beautifully appointed four bedroom main home with detached office/studio. Walk to town and beaches, peekaboo view.
\$3500 month.

Photos cannot describe the serenity and ambiance of this home. A must see. Owned by nationally collected, Cannon Beach artist, Miska
425-922-6329

651 Help Wanted

Hiring CDL drivers for the Astoria and Warrenton areas. Home daily, paid weekly.
Call for details
(360)262-9383

Local upscale restaurant
Hiring a chef and Line cooks
Please send resume to
Blind Box 33
c/o The Daily Astorian
P.O. Box 210,
Astoria, OR 97103

The Portway is looking for an experienced cook. Full-time/year round. Please apply in person at the Portway 422 West Marine Drive, Astoria. No phone calls please.

Looking for a new place to live? The classified ads offer a complete section of homes, apartments, and mobile homes to fit your needs. Check daily for new listings!



John Orr

DAMIAN MULINIX PHOTO

John Orr Jazz Trio plays WineKraft

ASTORIA — The John Orr Jazz Trio will play at WineKraft in Astoria (80 10th St.) 7 to 9 p.m. Friday, Nov. 3.

The Trio consists of Joe Church (bass), Tom Peake (drums) and John Orr (electric guitar and voice). The band draws from an eclectic jazz repertoire of Latin jazz, swing and an occasional ballad.

Orr's musical style is influenced by Wes Montgomery, Joe Pass, Harry Connick and Mose Allison. The trio is at once relaxing, stimulating and upbeat.

The group is available for booking for clubs, parties and holiday gatherings for Christmas jazz. Contact Orr at realjohnnyo@gmail.com or call 503-741-6085.

Expert examines natural, human-related influences on sedimentation in Lower Nehalem Bay

MANZANITA — The Lower Nehalem Watershed Council will welcome Rob Wheatcroft, of Oregon State University, for the next installation of the Speaker Series 7:20 p.m. Thursday, Nov. 9, at the Pine Grove Community House (225 Laneda Ave.) in Manzanita.

The presentation will follow an update from the Watershed Council at 7 p.m. Doors open at 6:30 p.m. The event is free and open to the public.

Wheatcroft will examine how natural processes — such as variations in river flow and coastal uplift, as well as human-related processes, such as timber harvesting and land reclamation — combine to influence the supply and accumulation of sediment and organic carbon in Oregon estuaries. The Nehalem River system will be featured, but lessons learned from other dispersal systems in the Pacific Northwest will be used to provide context.

In his research, Wheatcroft, a professor in the College of Earth, Ocean, and Atmospheric Sciences, focuses on the transport and accumulation of sediment and organic carbon across the land-ocean boundary from event to millennial time scales.

This interest has led him and his students to study small, mountainous river systems in the Apennines, Pyrenees, California and the Pacific Northwest. He is leading a team funded by Oregon Sea Grant to better understand the competing roles of relative sea-level rise and river sediment supply in the accumulation of sediment and carbon in Oregon estuaries over the last 300 years.

Find more information on the speaker series on the Watershed Council's Facebook page ([facebook.com/lncw1](https://www.facebook.com/lncw1)).



L. BROPHY PHOTO

From left: Sean Mahaffey (Oregon Sate University), Narayan Elasmay (Columbia River Estuary Study Taskforce) and Grace Molino (Brown University) work to extract a 3-meter-long core from a Nehalem Bay marsh in June 2016.