

Continued from Page 9

Paul Brent Pop-Up Studio and Gallery

608 Broadway St.
Paul Brent, sponsored by the Gilbert Block Building, is an artist whose work has become internationally known to represent the coastal lifestyle. From his watercolors to his recent oil paintings, he captures nature in its best and most idyllic form. While best known for his beach subjects, he has painted landscapes that are equally indicative of his talent to recreate all aspects of nature.

Fairweather House and Gallery

612 Broadway St.
Opening reception for "Shadows," an exhibition that focuses on the interplay of light and dark through selected art that expresses time as the fall season progresses. New artwork by Northwest artists Diane Copenhaver, Gregory Bell, Janet Hickox, Lisa Wisner, Whelsey Whelp, Tamara Johnson and Marga Stanley will be featured.

"As I contemplated the subject of 'Shadows,' I found inspiration in a variety of perspectives around the



A piece at SunRose Gallery

idea of shadow; shadow as opposite, reflection, repetition, companion, or as enabled by light," Copenhaver said. "I have expressed "Shadows" through a variety of works, bold and expressive, muted and gentle, solid and soft edges, and layers of dark and light. I am naturally moved to create a sense of mystery in my painting and hope that my work for "Shadows" pro-

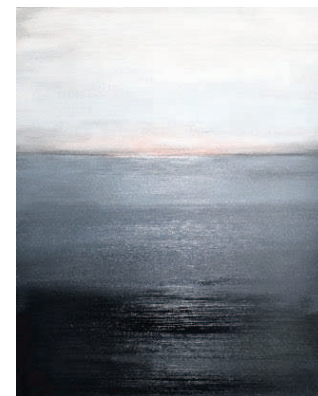
vides the space to engage and create a personal story and interpretation of shadow."

Seaside and Gearhart naturalist Neal Maine will speak at 6 p.m. about the ecology of the local habitat. Music by Shirley 88, and special guest of honor will be "Flynn," an American kestrel, from the Wildlife Center of the North Coast.

SUBMITTED PHOTOS



"Rest Area" by Scott Johnson



"Lost Light"



The Illahee Apartments



Why Live Anywhere Else?

1046 Grand Avenue
Astoria, OR 97103
503-325-2280

Open 7am Daily!

ASTORIA COFFEEHOUSE & BISTRO

243 11th Street, Astoria, OR 97103
503-325-1787
www.AstoriaCoffeeHouse.com

SERVING BREAKFAST, LUNCH & SUPPER

European Style Coffeehouse by day, intimate bistro offering neo-regional cuisine by night.

Regional selection of beers, wines and vintage cocktails available.

We cater your event!

Follow & "Like" us on Facebook

Weekly Specials: 5-8 PM
Sushi & Martinis Mondays
Taco & Margarita
Thursdays (3 Buck Tacos)

Art-in-the-Loft Gallery at Beach Books

616 Broadway St.

Presents the second in a series of exhibits, featuring up-and-coming artists from the Pacific Northwest: Stefanie Shilling and Nanette Tsatsaronis.

Becoming an artist takes skill, time and talent. Becoming a successful artist is not easy (downright difficult, some will tell you). However, despite its difficulty, art is a calling, and few who venture into the world of artistic expression regret it. Being creative is hard work, but enormously rewarding.

To the artist and their patrons, art is a win-win proposition; everyone wins when an artist shares their artistic expression with others. In pursuit of this goal, artists put creative thoughts and imagery onto canvases, paper, glass, metal, pottery and a multitude of other media for others to enjoy. This month the gallery is highlighting two women artists who have done the hard work and are ready to take a well-earned step forward in their artistic careers.

Dough Dough Bakery

8 North Holladay Drive

Artistic chef Jonathan Hoffman has his fingers in many pies; he is an

entrepreneur who works with local farmers, anglers and foragers to use the freshest ingredients in his culinary fares. Dough Dough features an encore exhibit from artist Scott Colin Johnson, whose art is rooted in the study of en plein air (open air) painting.

T.anjuli Gallery

7 North Holladay Drive
Artist Billy Lutz is the gallery owner/resident artist/Seaside philosopher, whose body of work spans a career of 30 years of mature thematic art of the resistance painting.

Artist's statement: There are two modern forms of governance in American culture: the conservative, Strict Father model and the progressive Nurturing Parent model. The first prescribes an individualist authority instructing one how to behave — "we know what's best

for you, so do what you are told" — while the other model prescribes consensus and collective thinking — "let's discuss our problems and arrive at compromise."

Moxie Shine

609 Broadway St.
Moxie is a unique and conscientious business filled with the eclectic from exclusive jewelry and art where everything is handmade. Illustrious and innovative, Moxie is an altruistic institution of significant change in the world of business. An established member of the Fair Trade Federation, Moxie demonstrates a genial and equitable approach to conducting business.

Find additional original art during the day at Hold Fast Gallery, 611 Broadway St.; Seaside Antique Mall, 726 Broadway St.; and Seaside Coffee House, 3 N. Holladay Drive.