

Kid Scoop

THE AWARD-WINNING PRINT & ONLINE FAMILY FEATURE



© 2017 by Vicki Whiting, Editor Jeff Schinkel, Graphics Vol. 33, No. 37

Pluto: Is it a planet or not?

Billions of miles from Earth is tiny Pluto. We learned more about it when a NASA spacecraft passed by it for the very first time.



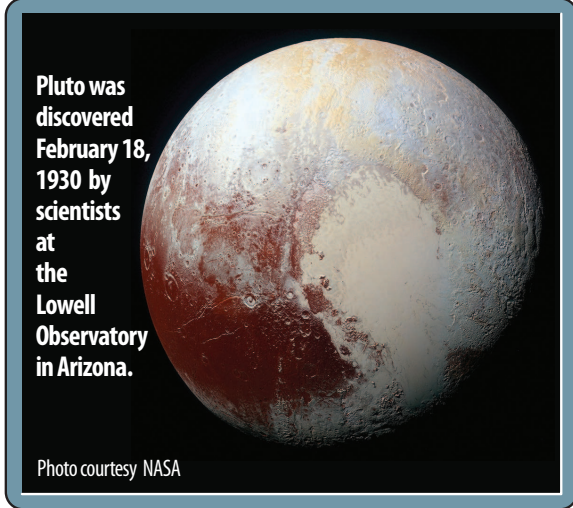
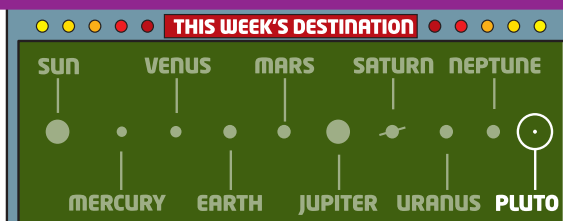
Dear Kid Scoop Readers -
Once Pluto was considered the ninth in our solar system.

In 2006, it was _____ that Pluto was too _____ to be a regular planet, so now it is called a "dwarf planet." It _____ the sun just like the other planets. But tiny Pluto is only half as _____ as the United States and it's _____ much smaller than our _____.

- Woodward

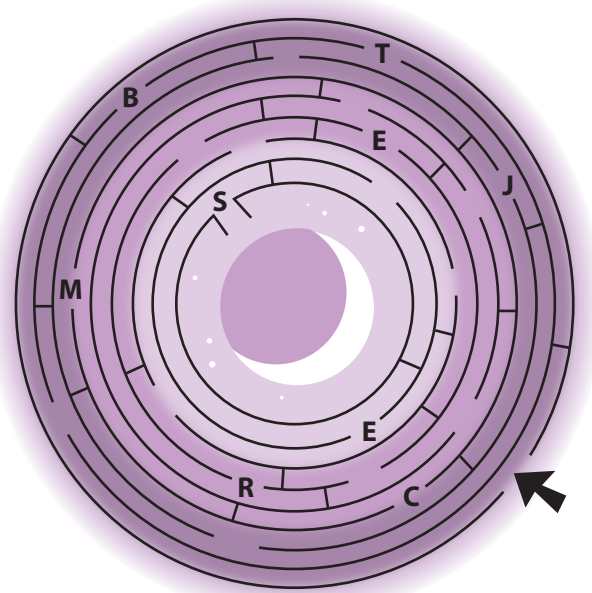
Replace the missing words.

- ORBITS
- WIDE
- MOON
- PLANET
- SMALL
- DECIDED



Dwarf Planets

To date, there are five objects orbiting the sun that are called dwarf planets. Pluto is one of them. Write down the letters on the correct path through this maze to discover the name of another of the dwarf planets.



Circle every other letter to find the names of the other three dwarf planets.

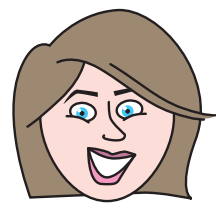
- E K R D I J S B E
- H T A N U B M Y E T A M H
- M D A T K R E N M T A S K U E Y M

Visit Pluto. Lose Weight.

If you visited Pluto, you would weigh much less there than you do on Earth. Do the math to find out how much less each person weighs on Pluto.



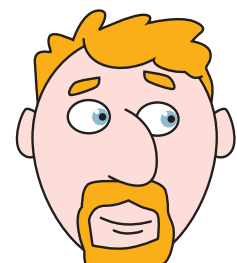
Albert weighs 75 pounds on Earth. He weighs (3+2) _____ pounds on Pluto.



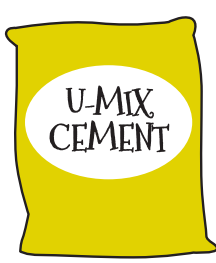
Mrs. Aster weighs 120 pounds on Earth. She weighs (12-4) _____ pounds on Pluto.



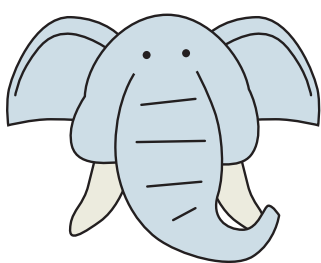
Cosmo the cat weighs 15 pounds on Earth. He weighs (100-99) _____ pound on Pluto.



Mr. Wilson weighs 200 pounds on Earth. He weighs just (7+7) _____ pounds on Pluto.



An 80 lb. bag of cement on Earth weighs only (10-4) _____ pounds on Pluto.



An elephant weighs 6,000 pounds on Earth. It weighs (210+210) _____ pounds on Pluto.

Use this chart to answer these questions.

- Pluto orbits the sun at a very high rate of speed.
 True False
- The diameter of Pluto is about the same as the distance between New York City and Houston, Texas.
 True False

	PLUTO	EARTH
DISTANCE FROM THE SUN	3.6 BILLION MILES	93 MILLION MILES
TIME TO ORBIT THE SUN	248 EARTH YEARS	365 DAYS
ORBIT SPEED	10.7 MILES PER HOUR	70,000 MILES PER HOUR
LENGTH OF DAY	6.5 EARTH DAYS	JUST A BIT OVER 24 HOURS
DIAMETER	1,473 MILES	7,926 MILES
NUMBER OF MOONS	5	1

SOURCE: planetfacts.org

Extra! Extra!
Pluto Adjectives
Look through the newspaper to find five adjectives that describe Pluto.
Standards Link: Language Arts: Follow simple written directions.

Kid Scoop Puzzler

How Pluto Got Its Name

When Pluto was discovered in 1930, it was called simply, Planet X. Because Pluto orbits in the dark, outer reaches of space, the name of the Roman god of the underworld seemed like a good fit to this clever namer.

Use the code to find out the name of the 11-year-old English girl who suggested the name Pluto.

- = A ■ = B ■ = C ■ = E ■ = I ■ = N
- = R ■ = S ■ = T ■ = U ■ = V ■ = Y



Double Double Word Search

Find the words in the puzzle. Then look for each word in this week's Kid Scoop stories and activities.

- UNDERWORLD
- MAKEMAKE
- BIRTHDAY
- REGULAR
- PLANET
- PLUTO
- DWARF
- ORBIT
- CERES
- NINTH
- DARK
- TRIP
- ERIS
- LOSE
- MATH



Standards Link: Letter sequencing. Recognized identical words. Skim and scan reading. Recall spelling patterns.

FROM THE LESSON LIBRARY

Measure It!

- There are so many things to measure in a newspaper. Measure with a ruler and find out:
- The size of a person standing in a photo
 - The length of the longest headline
 - The length of the longest word you find

Standards Link: Research: Use the newspaper to locate information.

What spacecraft is loud, fast and very crunchy?
ANSWER: A rocket chip.

Astoria Forest Products, LLC
10 Pier 1 • Suite 301
Astoria, Oregon 97103

KOA Astoria, Warrenton & Seaside
1100 Northwest Ridge Road
Hammond, OR 97121
reservations 800-562-8506
info 503-861-2606

Northwest West Inc. Income Tax Preparation
762 Avenue G • Seaside, OR 97138
503-738-3480

Tires LES SCHWAB WARRENTON 861-3252
1167 SE Marlin
McCALL TIRE CENTER SEASIDE 738-8243
2155 S. Roosevelt

Morgan Civil Engineering
PO Box 358 • Manzanita
503-368-6186

JOE'S Mobil 1701 Marine Dr.
Astoria, OR 503-325-7812

Classic BODYWORKS AND TOWING 503.325.0411
34747 Hwy 101 Bus. ASTORIA

LEWIS & CLARK TIMBERLANDS
MANAGED BY GREENWOOD RESOURCES

RE/MAX River & Sea

Tevin Bros. LAND & TIMBER
ASTORIA | 503-556-0410

Sunspire Health
Astoria Pointe
The Rosebriar
263 W Exchange • Astoria | (877) 435-7790

NORTHWEST READY MIX
950 Olney Ave • Astoria
503-326-3562

STREET FOURTEEN CAFE 1410 COMMERCIAL STREET
ASTORIA 503-325-5511

DA YANG Great Ocean
Da Yang Seafoods LTD.

ASTORIA RIVERWALK INN 400 INDUSTRY ST.
ASTORIA 503.325.2013
AstoriaRiverwalkInn.net

La Cabana D Raya MEXICAN RESTAURANT
35431 HWY 101 BUS • ASTORIA • 503-325-3656

Emerald Heights APARTMENTS 503-325-8221

Golden Sands A Retirement and Assisted Living Community
21608 O Lane • Ocean Park • 360-665-0190

Bayshore Animal Hospital 325 Marlin Avenue
WARRENTON 503-861-1621

WORKSOURCE OREGON NORTHWEST OREGON EMPLOYMENT DEPT.
450 MARINE DR ASTORIA 503-325-4821

Home Furnishings 1033 Commercial Street
Astoria, Oregon 97103
(503) 325-5620

COLUMBIA RIVER BAR PILOTS
Providing safe passage since 1846

NEWSPAPER CARRIERS NEEDED

The Daily Astorian has several routes available • Call 503-325-3211 for more information

Thanks to the following businesses for supporting Newspapers In Education
www.dailyastorian.com/nie

- Appelo Archives Center
- Hees Enterprises Inc.
- Quackenbush Builders Inc.
- Bridgewater Bistro
- Clatsop Behavioral Healthcare
- Lazerquick Seaside/Astoria
- Premium Adjustable Beds
- Suzanne Elise Assisted Living
- Moberg & Rust, Attorneys at Law
- Lower Columbia Clinic
- Ship Inn
- Rock Bauer Landscapes
- Chinook Marine Repair Shop
- Astoria's Best
- Bergerson Construction
- Josephson's Smokehouse
- U Street Pub and Eatery

Velazquez Painting & Construction LLC 1159 Wahanna Seaside
503-739-3055

Martin L. Alvey, P.C. 10 PIER ONE SUITE 202 | ASTORIA
martinalvey.com | 503-325-5509

SUBWAY 11 W. Marine Dr. | Astoria | 503-325-3322