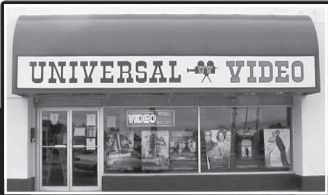


## UNIVERSAL VIDEO

In October 1983, brothers Steve and Jim Haugen opened Universal Video with 400 square feet and 175 movies. In 1984 they began moving more video's into the adjoining business, formerly known as George Bee's discount Books, then slowly but surely their business grew into what they have today. the Universal showroom is an enormous 3000 square feet, housing 25,000+ titles, with an extensive special DVD section. You can find videos dating back to 1915, the Birth of a Nation, in black and white to new releases. You know immediately when you walk into this video store why it is so successful... Steve and Jim always have a smile on their face, a warm hello and ask, may I help you?

47 N. Holladay Drive  
Seaside, OR  
503-738-8877



The Only locally-owned, self-servicing dealer in Clatsop County  
It's The Name You've Come To Trust

## J & S APPLIANCE AND HOME FURNISHINGS



Jim and Shela Pierce purchased their business in 1984 from Joe Nerenberg, owner of Hildebrand Furniture.

In May, 1990 J&S moved to 1442 Commercial, Astoria to expand their sales floor, providing reconditioned appliances with handy street-level access to customers.



Customer Service is a belief practiced at J&S. Jim & Shela Pierce along with a friendly, knowledgeable sales staff, factory-trained appliance and refrigeration technicians continue to offer reliable, reputable service since first opening their doors for business. The J&S staff has more than 100 years of combined experience and still has a great reputation for "Going The Extra Mile" to achieve customer satisfaction every day.

Come and visit the North Coast's premiere store with 14,000 square feet filled with appliances, dining and living room sets, mattresses, bedroom furniture and recliners, accessories and more. Stroll around J&S, visit the constantly changing room settings. Order custom furnishings. Take your item with you or have it delivered, FREE.

As usual, J&S will continue to donate traded-in used furniture to charity when possible.

503-861-0929  
529 SE MARLIN, WARRENTON

## CLEAN SWEEP PAVING & EXCAVATION



"From Excavation to the Finished Job"

Family owned & operated since 1985. Owners, Ben and Tami Olson started their business with a parking lot sweeping service. With Ben's excavation and paving experience they expanded and offer a diversified list of services including:

Asphalt Paving • Grading • Excavation  
Curbing • Power Auger • Jack Hammer  
Back Hoes • Sweeping • Saw Cutting  
Trucking • Landscape Materials  
Crane/Boom Truck • Trac Hoes  
Vacuum Truck • Demolition  
Bark Mulch • Rock • Catch Basin Cleaning  
Bobcats Available: Scoop Work • Mowing  
Power Sweeping • Cold Planing

Licensed in Washington & Oregon State ORCCB# 103308 WA# CLEANM1012DT

1570 Lewis & Clark Rd., Seaside  
503-738-7556

www.cleansweeppaving.com

34 years

KMUN 91.9fm  
KTCB 89.5fm  
KCPB 90.9fm  
CoastRadio.org

COAST COMMUNITY RADIO

Helping Lower Columbia residents grow beautiful gardens & healthy animals.

SINCE 1986, BRIM'S FARM & GARDEN has been serving the Lower Columbia region with Purina Feeds, veterinary and grooming supplies as well as a year-round garden center. Brim's Farm and Garden has been rated Astoria's Best Garden Center year after year by Daily Astorian readers. Our hand-selected nursery stock is chosen specifically for our maritime climate. Organic pest controls and soil amendments are the first choice when customers request solutions to local garden challenges. Fencing, horse tack and horse-quality hay are also available year round. We appreciate your friendship and business over the past 31 years and look forward to serving our community well into the future!



BRIM'S Farm & Garden

OPEN: 9AM-5:30PM MON-SAT

34963 Hwy 101 Bus. Astoria • 503-325-1562

(1mi. south of old Youngs Bay Bridge)

www.brimfarmngarden.com

- ☒ Purina Feed
- ☒ Fencing, Panels and Gates
- ☒ Quality Nursery Stock & Soils
- ☒ Pet and Livestock Feed & Treats
- ☒ Tack, Vet and Grooming Supplies

Follow us on Facebook

# CLATSOP POWER EQUIPMENT, INC.



SALES • SERVICE • RENTALS



34912 HWY 101 BUS • ASTORIA  
503-325-0792 • 1-800-220-0792