



Warm & Welcoming Sunfield Lane



Imagine Your Perfect Home Here!

1.06 Acres
Offered at
\$115,000
Surveyed
Septic Approved
Utilities Available



Beautiful and Peaceful Svensen

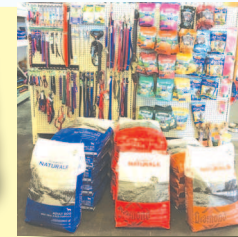
Elaine
RUSINOVICH
BROKER
503.741.0452



Pacific
Pro Realty
207 12th Street, Astoria
PacificProHomes.com

Farm and garden supplies
for *pet owners, hobby farmers*
and *serious gardeners*

\$2 OFF
Diamond 40lb dog food bags
Beef, Lamb and Chicken
Valid July 1-July 15



Fencing
Nursery Stock
Veterinary Supplies
Quality Pet Supplies
Pet & Livestock Feed
Fruit Trees and Berries



**30 Years Experience & Serving
Your North Coast Area for 7 Years!**

KATHY ISRAEL

Sales Manager | NMLS# 439842

o. 503.836.1330 c. 503.939.9987
e. kathy.israel@academymortgage.com
a. 675 SE Marlin Ave, Suite 2
Warrenton, OR 97146

ACADEMY
MORTGAGE CORPORATION™

State Lic: OR 439842; WA MLO-439842 | Corp Lic: OR ML 2421; WA CL-3113 | Corp NMLS# 3113 | Equal Housing Lender | MAC517-1445422



BRIM'S
has GREAT
BONES!

*Special
Orders
Welcome!*

Organic
Potting Soils
and Compost

Pest and
Disease
Controls

Bulk and
Packaged
Seeds

CHICK
TREATS

SOIL
AMENDMENTS

DEER-
RESISTANT
PLANTS



34963 Hwy 101 Bus., Astoria 1 mile south of old Youngs Bay Bridge • 503-325-1562

OPEN: MON-SAT • 9AM-5:30PM
www.brimsfarmngarden.com



BRIM'S
Farm & Garden

