



A mother river otter decides how best to neutralize a Dungeness crab at Cape Disappointment boat launch. — JANE WEBB PHOTO



Black bears are active on the Long Beach Peninsula and nearby areas, which have Washington state's densest populations of bears. It's important to keep human-related food sources out of their reach. Bears that become habituated to human-supplied food represent a danger to people. They often must be removed and euthanized. It's up to each of us to keep our bear neighbors safe. — BUD CUFFEL PHOTO



Roosevelt elk can often be seen in a viewing area off U.S. Highway 101 on Bear River on the south end of Willapa between Long Beach and South Bend. A resident herd of elk also occupied wild lands on the Long Beach Peninsula, but exact locations for them are difficult to predict. — JANE WEBB PHOTO



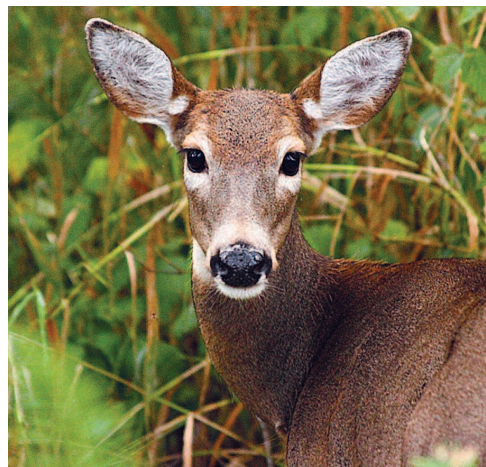
Trumpeter swans hang out in Black Lake in Ilwaco and other lakes and wetlands in the area. There is a major trumpeter swan conservation area near the north end of the Peninsula.— JANE WEBB PHOTO



White pelicans used to be uncommon near the mouth of the Columbia, but are being observed closer and closer to the ocean in recent years. These visited the Ilwaco waterfront in the spring of 2017. By the way, a flock of pelicans can be called a squadron, pod or scoop. — JANE WEBB PHOTO



Short-eared owls are year-round residents of Willapa National Wildlife Refuge, one of several owl species here. — MADELINE KALBACH PHOTO



The Peninsula deer are semi-tame. Be sure to keep a close eye for them along local streets and highways. — JONATHAN HEALE PHOTO



A bald eagle snatched a fish from a Long Beach Peninsula lake in late April 2017. Eagles are an everyday sight throughout the Columbia-Willapa area. — JANE WEBB PHOTO