

Kid Scoop .COM

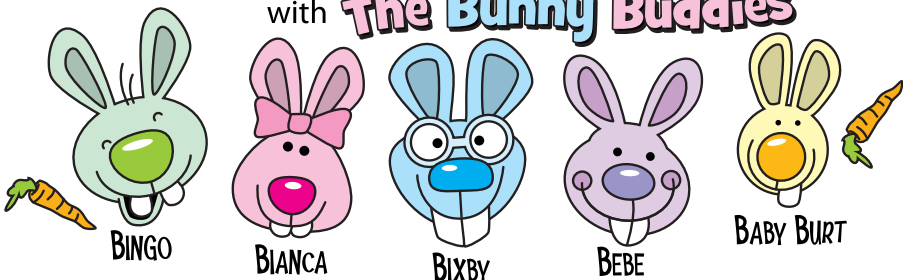
THE AWARD-WINNING PRINT & ONLINE FAMILY FEATURE



© 2017 by Vicki Whiting, Editor Jeff Schinkel, Graphics Vol. 33, No. 19

Happy Earth Day with The Bunny Buddies

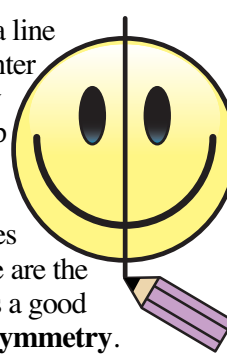
WAIT! Don't do this page alone. If this page looks **TOO HARD**, find an older buddy to help you. If it looks **EASY**, find a younger buddy and help them!



The Bunny Buddies are celebrating Spring and our beautiful planet this year! Just in time for Earth Day (April 22).

Matching Sides

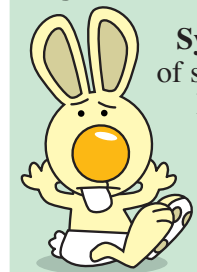
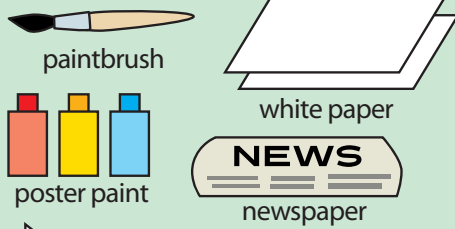
If you draw a line down the center of this happy face from top to bottom, you will see that both sides of the picture are the same. This is a good example of symmetry.



Create Symmetry Art

Symmetry is when both halves of something are exactly the same. Poor Baby Burt is confused. Do this project to help him understand symmetry.

STUFF YOU'LL NEED:



Cover your work surface with newspaper.

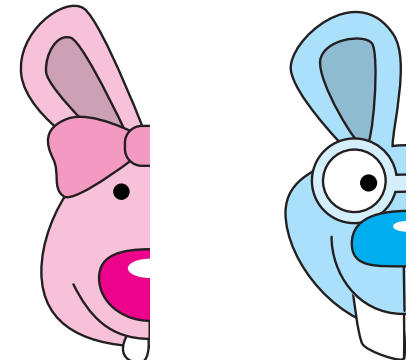
Fold a sheet of blank, white paper in half.

Unfold. Paint a design on one half of the paper.

While the paint is still wet, fold the paper in half along the fold you made and press so that the paint on the painted side transfers to the blank side.

Slowly open up the paper and you will have a matching image on both sides of the paper. **That's symmetry!**

Draw the other half of Bianca's face and Bixby's face. Make them symmetrical.



Let's Talk

A Kenyan proverb says, "The earth is not given to you by your parents, but loaned to you by your children." Discuss with your family what you think that means.

Rhyming Clothing

Bixby Bunny changed the names of spring clothes. Can you figure out what he is talking about? The real names rhyme with Bixby's silly names. For example, **LOW LIE** is really a **BOW TIE**!

| | | |
|-------------|--|----------------|
| FUN CAT | | CLUE BEANS |
| MARTY PRESS | | BUZZY CLIPPERS |
| TREE ROCKS | | |

Extra! Extra! Rhyme the News

Look through the newspaper for five or more words for which you know a rhyming word. List each word and its rhyming word on a piece of paper.

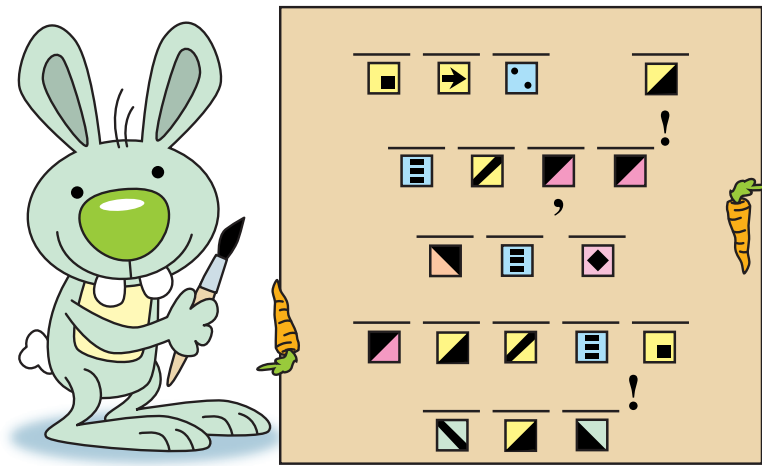
Standards Link: Reading Comprehension: Follow written directions.

Kid Scoop Puzzler

Earth Day Slogan

Bingo is making an Earth Day sign to celebrate. Use the code to help him finish his sign.

| | | |
|-----|-----|-----|
| A = | H = | S = |
| D = | I = | T = |
| E = | J = | U = |
| G = | R = | Y = |



Double Double Word Search

Find the words in the puzzle. Then look for each word in this week's Kid Scoop stories and activities.

NEWSPAPER SYMMETRY TRANSFER SURFACE PROVERB CLOTHES RHYMING BOTTOM SPRING EARTH BUDDY FOLD HALF SAME CLUE

SY Y M S P R I N G
R M R S A M E E C B
Y E E T O T W A L R
D D F T E S R R O E
D L T S P M E T T V
U O I A N U M H H O
B F P F L A H Y E R
C E E C A F R U S P
R H Y M I N G T A L

Standards Link: Letter sequencing. Recognized identical words. Skim and scan reading. Recall spelling patterns.

FROM THE Kid Scoop LESSON LIBRARY

Half and Half

Find a picture of a face or an object in the newspaper. Cut out the picture, fold it in half and cut along the fold. Now glue the picture onto a piece of white paper. Try to sketch the missing half.

Standards Link: Visual Art: Create representations with bilateral symmetry.

Why did the Easter Bunny fire the duck?

ANSWER: He kept quacking all the eggs.

NEWSPAPER CARRIERS NEEDED

The Daily Astorian has several routes available in the Astoria area. Call 503-325-3211 for more information.

Thanks to the following businesses for supporting Newspapers In Education www.dailyastorian.com/nie

- Appelo Archives Center
- Hees Enterprises, Inc
- Quackenbush Builders Inc.
- Bridgewater Bistro
- Clatsop Behavioral Healthcare
- Lazerquick Seaside/Astoria
- Premium Adjustable Beds
- Suzanne Elise Assisted Living

- Moberg and Rust Attorneys at Law
- Lower Columbia Clinic
- Ship Inn
- Rock Bauer Landscapes
- Chinook Marine Repair Shop
- Astoria's Best
- Bergerson Construction
- Josephson's Smokehouse
- U Street Pub and Eatery

Martin L. Alvey, P.C.
10 PIER ONE SUITE 202 | ASTORIA
martinalvey.com | 503-325-5509

SUBWAY
11 W. Marine Dr. | Astoria | 503-325-3322

Velazquez Painting & Construction LLC
1159 Wahanna Seaside
503-739-3055

COLUMBIA RIVER BAR PILOTS
Providing safe passage since 1846

Astoria Forest Products, LLC
10 Pier 1 • Suite 301
Astoria, Oregon 97103

KOA Astoria, Warrenton, & Seaside
1100 Northwest Ridge Road
Hammond OR 97121
reservations 800-562-8506
Info 503-861-2606

Northwest West Inc. Income Tax Preparation
762 Avenue G, Seaside, OR 97138
503-738-3480

Tires LES SCHWAB WARRENTON 861-3252
1167 S.E. MARLIN SEASIDE 738-9243
McCALL TIRE CENTER 2155 S ROOSEVELT

Morgan Civil Engineering
PO Box 358 • Manzanita
503-368-6186

JOE'S Mobil 1701 Marine Dr Astoria, OR
1-503-325-7812

Classic BODYWORKS 503.325.0411
34747 Hwy 101 Bus. Astoria

LEWIS & CLARK TIMBERLANDS™
MANAGED BY GREENWOOD RESOURCES*

RE/MAX River & Sea

Speer Bros. LAND & TIMBER CO.
ASTORIA | 503-556-0410

Sunspire Health
Astoria Pointe
The Rosebriar
263 W Exchange • Astoria | (877) 435-7790

NORTHWEST READY MIX
950 Olney Ave • Astoria
503-325-3662

STREET FOURTEEN CAFE 1410 COMMERCIAL STREET
ASTORIA
503-325-5511

Great Ocean DA YANG
Da Yang Seafoods LTD.

ASTORIA RIVERWALK INN 400 INDUSTRY ST. ASTORIA
503.325.2013
AstoriaRiverwalkInn.net

La Cabana D Raya
MEXICAN RESTAURANT
35431 HWY 101 BUS • ASTORIA • 503-325-3656

Emerald Heights APARTMENTS 503-325-8221

Golden Sands
A Retirement and Assisted Living Community
A REGENCY PACIFIC COMMUNITY
21608 O Lane • Ocean Park • 360-665-0190

Bayshore Animal Hospital 325 Marlin Avenue WARRENTON
503-861-1621

WORKSOURCE OREGON
NORTHWEST OREGON EMPLOYMENT DEPT.
450 MARINE DR ASTORIA 503-325-4821

Home Furnishings
1033 Commercial Street
Astoria, Oregon 97103
(503)325-5620