



CLASSIFIEDS

THE DAILY ASTORIAN

CLASSIFIED INDEX

ANNOUNCEMENTS
 035.....Lost & Found
 040.....Personals
 050.....Professional Services
 061.....Bankruptcy

EMPLOYMENT
 060.....Babysitters, Child Care
 070.....Help Wanted
 080.....Work Wanted

FINANCIAL
 105-106.....Business For Sale-Sales Op
 120.....Money To Lend

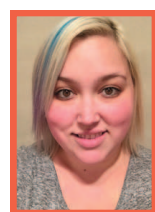
REAL ESTATE
 130.....Open Houses
 150-200.....For Sale
 160.....Lots & Acreage
 195.....Homes Wanted
 205-275.....Rentals
 285-290.....RV/Trailer Space

MISCELLANEOUS
 300.....Jewelry
 310.....Tools & Heavy Equipment
 350.....Furniture & HH Goods
 365.....Antiques & Collectibles
 375.....Misc. For Sale
 379-395.....Swap Meets & Garage Sales
 400.....Misc. Wanted
 430.....Arts & Crafts

ANIMALS/LIVESTOCK
 460.....Animal Boarding
 470.....Feed-Hay-Grain
 475-495.....Animal-Livestock
 485.....Pets & Supplies

MARINE
 500-525.....Marine

AUTOMOBILE
 535-595.....Automobile



WE GET RESULTS

CALL **JAMIE** TODAY TO PLACE YOUR AD **503-325-3211**

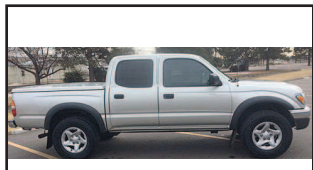
or 800-781-3211 x231 • E-mail: classifieds@dailyastorian.com
 Web: www.dailyastorian.com

THE DEADLINE FOR CLASSIFIED ADS is 1 p.m. the day before your ad is scheduled to run

All classified ads require pre-payment

NEW TODAY!
 Look at these ads first

NEW TODAY



2002 Toyota Tacoma Double Cab SR5 4x4, 144396 miles, 3.4L V6, Automatic, titanium/gray, \$2700, clean title. Call at 225-283-6723

Astoria Music Festival seeks part-time Office Manager. Customer relations, community outreach, ticket sales. Email office@astoriamusicfestival.org.

ADVERTISERS who want quick results use classified ads regularly.

Astoria Music Festival seeks volunteer to coordinate Home Stay Host Program. Hospitality, Guest relations. Unique opportunity to be part of the classical music family in Astoria. Email office@astoriamusicfestival.org.



1993 Kubota L2950 4WD, 31Hp, Only 1898 Hours, Diesel Tractor With Loader, 4-cylinder \$2500 Call:(971)217-6409



1997 Jeep Wrangler Sport, Auto, 91,156 miles, clean title, everything works on it, 4.0L I6, \$3100, White/ Tan. Feel free to call or text at 318-295-1896

Milling Machine: ACER AGS-618 \$2,000 obo. U-haul away. 503-791-5070

If You Live In Seaside or Cannon Beach DIAL **325-3211** FOR A Daily Astorian Classified Ad

Bagels by the Sea Seeking Barista. Full-time, no winter layoff. Apply in person. 210 S. Holladay, Seaside

Buying Gold, Silver, Estate Jewelry, Coins, Diamonds, Old-Watches. Downtown Astoria-332 12th St. Jonathon's, LTD (503)325-7600

NEW TODAY



Join the Lum's Team! We are growing and hiring GREAT team members for the following positions:

- Facilities Maintenance
- Detail Tech
- Service Advisor
- Sales Associates
- ASE Certified Technician

Seeking great customer service skills with awesome attitude! Will train! Valid driver's license required.

We offer vacation, health benefits, 401K and much more. Proudly a drug-free workplace.

Apply at 1605 SE Ensign Lane, Warrenton, OR or <http://www.lumsautocenter.com/employment>

VOLUNTEERS NEEDED
Astoria Music Festival seeks volunteer to coordinate Home Stay Host Program. Hospitality, Guest relations. Unique opportunity to be part of the classical music family in Astoria. Email office@astoriamusicfestival.org.

45 Public Notices

Occasionally other companies make telemarketing calls off classified ads. These companies are not affiliated with The Daily Astorian and customers are under no obligation to participate. If you would like to contact the attorney general or be put on the do not call list, here are the links to both of them
 Complaint form link: <http://www.doj.state.or.us/finfraud/>

70 Help Wanted

ALL ABOUT CANDY SEASIDE CANDYMAN NEEDS YOUR HELP
 \$12/hr to start increasing to \$14 with proven experience. **!!START IMMEDIATELY!!**
 21 N. Columbia, #105, Seaside Or. (503)738-5280, (503)738-2871 candyman@seasurf.net

Astoria Music Festival seeks part-time Office Manager. Customer relations, community outreach, ticket sales. Email office@astoriamusicfestival.org.

Astoria School District is seeking applicants for the position of **Superintendent/Board Secretary/Accounts Payable Clerk** Visit astoria.tedk12.com/hire/index.aspx for details or call 503-325-6441

Bagels by the Sea Seeking Barista. Full-time, no winter layoff. Apply in person. 210 S. Holladay, Seaside

OCEAN BEACH HOSPITAL & Medical Clinics

Ocean Beach Hospital is looking for a

Full-Time PHYSICAL THERAPIST & Full-Time OCCUPATIONAL THERAPIST

More info: www.oceanbeachhospital.com. Contact employment@oceanbeachhospital.com or 360-642-6315.

70 Help Wanted



Be all that you can BEACH! Bonfires, sand castles, star gazing. Summer is almost here!

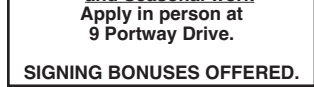
Come spend your summer beachside, working for Oregon's finest family-owned coastal hospitality company.

Wait and banquet staff, front desk, supervisors, beach attendant/cabana, cook, dishwasher, bell staff and hosts, we've got a great role for you.

As part of the Martin Hospitality team, you'll help provide impeccable service, luxury guest experiences and family fun in stunning Cannon Beach.

Applications: online at martinhospitality.com/jobs or in person at 148 E Gower, Cannon Beach.

For more info, call Tamara at 503-436-1197.

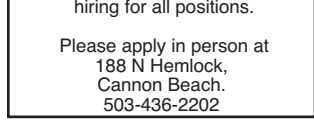


Bornstein Seafoods in Astoria, OR is now Hiring for Filleters, Crab Shakers and Seasonal work Apply in person at 9 Portway Drive.

SIGNING BONUSES OFFERED.
Building Summer Crew Housekeepers needed apply in person @**Hotel 6** 2369 South Roosevelt Dr. Seaside, Wages DOE

District Superintendent Youngs River Lewis and Clark Water District Astoria, Oregon Salary \$52,000 to \$65,000 DOQ Benefit Package negotiable

Complete job description and application requirements available at www.SDAO.com
 Closing date: April 14, 2017



Bill's Tavern and Brewhouse is hiring for all positions. Please apply in person at 188 N Hemlock, Cannon Beach. 503-436-2202

Let your pockets "jingle" with extra cash from the Daily Astorian classifieds

Maintenance-Facilities Service Worker Pacific Transit

Pacific Transit is now accepting applications for a **Maintenance-Facilities Worker at its Seaview, WA Facility.** This is a full time, union position, with benefits. Salary \$14.00 - \$17.00 per hour, while training, increasing to \$22.91 per hour, six months after completion of training.

Minimum Requirements Must have a valid Washington State "CDL" Commercial Drivers License; Class "A" or "B" with air brake restriction removed; a passenger, "P1" endorsement and current Medical Certification. Previous heavy duty vehicle and custodial maintenance experience preferred. When on call, must be able to respond to the Seaview facility within sixty minutes.

Typical duties include maintenance of facility grounds, and buildings, in both North and South County. Assisting in routine maintenance and emergency mechanical repairs on vehicles and other transit equipment; fuels and cleans, transit vehicles and equipment as needed. In the absence of available drivers, may be required to operate buses in revenue service, both North and South County.

Full job description and application can be picked up at our Raymond Office, 216 N. 2nd Street, Raymond; Seaview Facility at 2750 Pacific Way, Seaview, WA; website at pacifictransit.org; or call 642-9418.

Send applications to **Pacific Transit System, Human Resources, 216 N. 2nd Street, Raymond, WA 98577. Position open until filled.**

Pacific Transit System has a policy of a drug and alcohol free workplace. Employment is contingent on applicant passing a substance abuse and alcohol test, and random testing will be performed throughout the period of employment. Successful applicants must also provide proof of eligibility to work in the United States prior to employment. Pacific Transit is an Equal Opportunity Employer.

70 Help Wanted

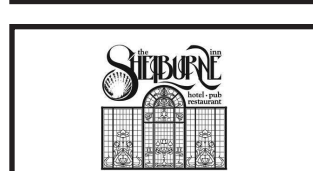


Port District No. 1 of Wahkiakum County, Washington is seeking a highly motivated individual to fill an **Assistant Manager/Maintenance Supervisor** Position.

Applicants may either pick up an application and job description in person at the Port's office at **500 2nd Street, Cathlamet, Washington** or call (360) 795-3501 to request an application/job description by mail or email.

Applications must be received by April 7, 2017 at 3:00 p.m.

This is a full time position that requires a current Washington State Driver's license and boater education card. A background check, drug testing, high school diploma or GED and clean driving record are required, and marina management experience performing maintenance work and a college degree are preferred. EOE.



Part time BARTENDER/SERVER needed at Shelburne Restaurant & Pub. Experience preferred. Must be willing to work weekends

STOP BY FOR AN APPLICATION. 4415 Pacific Way, Seaview No phone calls please.

70 Help Wanted

PACIFIC TRANSIT SYSTEM POSITION AVAILABLE EXTRA BOARD OPERATOR-A SOUTH BOARD

Pacific Transit System is accepting applications for an On-call Extra Board Operator- A South Board. Minimum of 40 hours per month guaranteed. Wage \$19.90 after training. Home base will be at the Seaview Facility with work at both the North (Raymond) and South (Long Beach) Facilities.

All applicants must possess the following qualifications:

- > Possession of a valid Washington State Driver's License and a current Medical Examiner's Certificate at time of hire.
- > Must have a valid CDL for Class A or B; endorsements for Passenger 1 (P1); and Air Brake Restriction Removed.
- > Must have Interstate Self-certification with the DMV at time of hire.
- > A clean Driving Abstract for the past 5 years from all states in which you have had a license to drive. Must be submitted with application.
- > Able to pass a Pre-Employment drug test.

Full job description and application may be picked up at the **Seaview Facility, 2750 Pacific Way, Seaview, Washington, Monday through Friday 11:00am to 5:00pm;** via our web page at www.pacifictransit.org or call 642-9418/875-9418.

Pacific Transit System has a policy of a drug and alcohol free workplace. Pacific Transit is an Equal Opportunity Employer. Position is open until filled.

LOG TRUCK DRIVER: Experienced DRIVER NEEDED! Offer competitive Salary, Benefits, Paid Vacation. Offer 401 after 1yr. Please inquire 360-795-3068

New Today



Join a team of professionals at Tongue Point Job Corps Center, operated by MTC for the U.S. Department of Labor. We teach 473 students, ages 16-24, the academic, technical training, employability, and social skills needed to be come successful in the workplace and in life. MTC has been serving disadvantaged populations for over 30 years and employs nearly 10,000 workers.

MTC offers an excellent benefits package which includes a variety of company-paid and optional insurance plans, 401(k) with fully-vested company match after one year, 11 paid holidays, 3 week's vacation, and 2 week's sick leave. Enjoy free use of our fitness facility, racquetball court, and low-cost meals in our dining hall.

Now Hiring: Maintenance Manager
 •Directly supervise and manage staff and program activities.
 •Plan, manage, and assign maintenance tasks on buildings, grounds, and equipment.
 •Maintain management records on equipment, building systems, and energy conservation usage, including preventative maintenance checks.

For more information and to apply, go to www.mtcjobs.com Questions? Call 503-338-4961

Management & Training Corporation is an Equal Opportunity Employer Minorities/Females/Disabilities/Veterans MTC Values Diversity!

Tongue Point is a drug-free workplace and has a tobacco-free campus.

CRYPTOQUIP

3-24 CRYPTOQUIP

G U F T G O F D G T P Z A F Z G Y Z A P
 Y G P Q W J T L P Q B S Q C L A F L
 U C S J L R , P I P Q W S T P B S J C L
 A F I P F R J C Y J Q C G T G T D .
Yesterday's Cryptoquip: IF THE FAMED LAWYER DARROW HAD TOO MANY PERSONAL POSSESSIONS, DID HE HOLD A CLARENCE SALE?
 Today's Cryptoquip Clue: B equals W

JANRIC CLASSIC SUDOKU

Fill in the blank cells using numbers 1 to 9. Each number can appear only once in each row, column and 3x3 block. Use logic and process elimination to solve the puzzle. The difficulty level ranges from Bronze (easiest) to Silver to Gold (hardest).

Rating: SILVER

8			1			9		
	2		4					
9	1			8		3	5	
	3		6			9		
6		7		8		5		3
		2		7		6		
7	5		8				4	9
				1		5		
	8			2				7

Solution to 3/23/17

3	2	9	1	6	8	4	5	7
8	1	4	3	7	5	2	6	9
7	5	6	4	2	9	8	3	1
9	6	7	2	8	1	3	4	5
2	8	5	7	4	3	1	9	6
4	3	1	9	5	6	7	8	2
6	4	3	5	1	2	9	7	8
5	9	2	8	3	7	6	1	4
1	7	8	6	9	4	5	2	3

CROSSWORD by Eugene Sheffer

ACROSS

1 Tank filler
 4 Ump's call
 8 Bygone days
 12 "— Little Teapot"
 13 Austen heroine
 14 Radio host Don
 15 Tennis stroke
 17 Songbird
 18 Country star Randy
 19 Verily
 21 Connections
 22 Prior to
 26 Berate
 29 Sister
 30 Martini ingredient
 31 Stately trees
 32 Eggy quaff
 33 Penny
 34 Estuary
 35 Cut the lawn
 36 Winter coasters
 37 Woodland

DOWN

39 Luau
 40 French article
 41 "Batman" butler
 45 Swerve
 48 Gilbert & Sullivan's ship
 50 Part of A.D.
 51 In — (shortly)
 52 Bro or sis
 53 Auction signals
 54 Pre-scribed amount
 55 Hill dweller
 2 Latin love
 3 Poet
 4 Running late
 5 Gather
 6 Run after K
 7 Colorful beetle
 8 Rice recipe
 9 Docs' org.
 10 California's Big —
 11 "For shame!"
 16 Wicked acts
 20 Still, in verse
 23 Curved molding
 24 Canta-loupe
 25 Tolkien creatures
 26 Feudal slave
 27 Advertising award
 28 Actor Epps
 29 Promptly
 32 Reporter's need
 33 Steep rock face
 35 ISP choice
 36 Comfort
 38 Continental cash
 39 Glazier's sheets
 42 Activist Parks
 43 Ireland
 44 Arrears
 45 Moving vehicle
 46 Rock's Brian
 47 Conclusion
 49 Equi-

Solution time: 25 mins.

R	O	W	S	S	E	E	R	T	O	P
A	B	O	O	H	A	L	O	O	A	R
F	O	O	L	H	A	R	D	Y	O	H
T	E	D	I	U	M	A	P	L	S	
		D	R	F	I	L	M	S		
P	E	C	S	B	E	D	S	H	A	D
O	N	O		E	T	E		E	R	A
I	D	O	L	R	C	A	A	D	A	M
		L	E	I	G	H	M	R		
E	X	C	O	N		P	A	C	I	F
Y	E	A		P	O	O	L	T	A	B
E	N	T		U	N	D	O		D	E
S	A	S		T	E	E	D		E	G

Yesterday's answer 3-24