

ASTORIA CORNER DELI

- Local
- Fresh
- Gourmet

See  for full menu

304 37th Street | Astoria, OR 97103
503-325-7768
All orders take-out

The DEPOT Restaurant

38TH & L, ON THE SEAVIEW BEACH APPROACH
360-642-7880
NORTH JETTY BREW DINNER
MARCH 3RD

Sweet Basil's Cafe
Natural • Organic • Wild

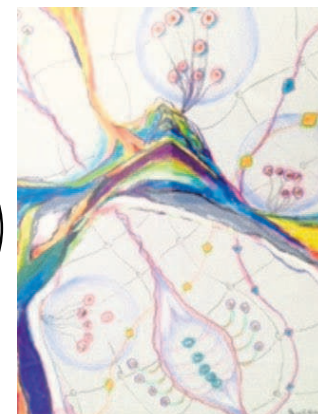
The Wine Bar
light bites, tapas & more

503.436.1539
www.cafesweetbasils.com
Cannon Beach

Gearhart FIRST SATURDAY

ART WALK

March **4**
2 to 5 p.m.



Bruce Horne will be the featured artist at Trail's End Art Association in March.

GEARHART — The Gearhart ArtWalk is gearing up for a new year. The next art walk will take place from 2 to 5 p.m. Saturday, March 4 at galleries and merchants in Gearhart. The featured local businesses for March are:

A Great Gallery

576 Pacific Way
A Great Gallery is looking forward to a new year of art walks in Gearhart. The gallery will feature new work by Susan Thomas, including "Pella" the Pelican, one of Thomas's favorite birds, and "Arty-Choke" by Lynda Campbell. "It brings forth memories of visits in Calistoga, California," Campbell says. Refreshments, including chocolate, will be served.

art walk season by offering original antique, vintage and modern works of art. Wherever your interest lies, in woodcut, watercolor, acrylic or oil, the shop wants to show you what it has collected. Refreshments will be served.

Trail's End Art Association

656 A St.
Trail's End will feature the imaginative art pieces of artist Bruce Horne during the month of March, with a reception during art walk. Home has been drawing since early childhood in northern Illinois; in elementary school he was a cartoonist his school newspaper. He graduated with a Bachelor of Arts in art education from Western Illinois University, returning to teach at the university lab school for six years. Horne's work is primarily mixed-media, but he loves black and white with graphite, ink or charcoal.

Horne will be on hand to talk about and answer questions about his latest work. Many other association artists will have works hung to enrich the experience. Refreshments will be served. In addition to being the featured artist at Trail's End in March, Horne will also be showing monthly at Influence Music Hall in Hillsboro.



Bruce Horne's work, at Trail's End, is primarily mixed-media, but he loves drawing in black and white too.



"Arty-Choke" by Lynda Campbell at A Great Gallery.

Romancing the Home

3350 Hwy 101 N.
Romancing the Home starts the

The Illahee Apartments



Why Live Anywhere Else?

1046 Grand Avenue
Astoria, OR 97103

503-325-2280



"Pella" by Susan Thomas at A Great Gallery.

Dining

Trivia Night Every Friday in our bar 7pm

BA BAKED ALASKA
DINING ROOM • PIZZERIA • BAR
THE ONLY THING WE OVERLOOK IS THE COLUMBIA RIVER

503.325.7414
bakedak.com
#1 12th Street, Astoria, OR

CA 18 MP RESTAURANT

503.755.1818
www.camp18restaurant.com
Favorite stop to & from the Coast

GREAT PUB GRUB & CRAFT BEER

the SHELBURNE inn
hotel • pub restaurant

Seaview, WA • 360.642.4150
shelburnerestaurant.com

Patty's Wicker Cafe

On the Beautiful Necanicum River

Breakfast & Lunch
600 Broadway Ste 7 & 8 - Seaside
503.717.1272



North Coast and Peninsula

FAMILIES WELCOME!

HUNGRY HARBOR GRILLE

313 Pacific Hwy, Downtown Long Beach, WA
360-642-5555 • www.hungryharbor.com

IMAGINE YOUR **Restaurant** ADVERTISED HERE!

McMENAMINS GEARHART HOTEL

1157 N. Marion Avenue
Gearhart
503-717-8150
www.mcmenamins.com