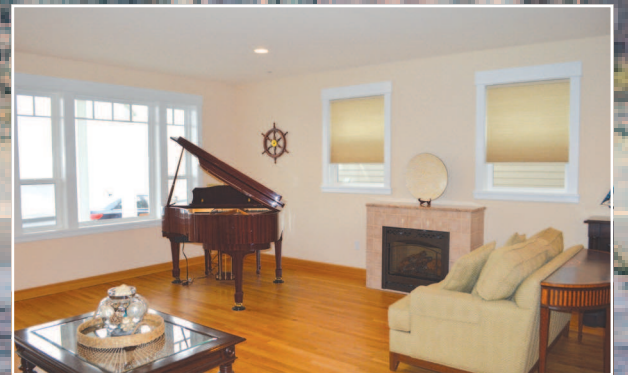




**2505 Mill Pond Lane, Astoria • \$875,000**



*Refined Design Home Staging | 503.338.9800*

This custom built home is located in the exclusive neighborhood of Mill Pond Village. With over 3,000 sq.ft. of living space and an open floor plan, this 3 bedroom, 2 full bathroom, 2 half bath home offers amazing Columbia River Views from every floor.

Featuring:

- Oak Hardwood flooring & custom Porcelain Tile Throughout
- Savaria Eclipse Residential Elevator
- Stainless Steel Stairway Railings

- Interior Sprinkler System
- 3 Gas Fireplaces
- Mitsubishi Ductless Electric Heating & Cooling
- Motion Detector Lighting from 1st & 2nd Floor
- Attached Oversized Finished 2 Car Garage
- Granite Counter Tops
- Medallion Cabinetry
- Bosch Dual Fuel Slide-in Gas Range With Electric Convection Oven

- Stainless Steel Appliances
- Built-in Hide Away Trash & Recycle
- Master Suite features a gas fireplace, a large master bath with air tub built for 2, oversized walk-in shower, Cadet wall heater for towel heating, walk in closet, and lots of storage.

There are so many more features not listed, but a must see. Schedule your appointment today to view this incredible home.

*Paula Marie Simantel*  
**503-298-0019**



**LRG** LARCIN REALTY GROUP, Inc.

810 Ave G, Seaside • 503.738.5797 • [www.LarcinRealtyGroup.com](http://www.LarcinRealtyGroup.com)