

THE DAILY ASTORIAN

CLASSIFIEDS

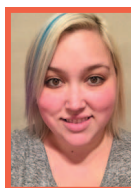


CLASSIFIED INDEX

- ANNOUNCEMENTS**
 035.....Lost & Found
 040.....Personals
 050.....Professional Services
 061.....Bankruptcy
- EMPLOYMENT**
 060.....Babysitters, Child Care
 070.....Help Wanted
 080.....Work Wanted
- FINANCIAL**
 105-106.....Business For Sale-Sales Op
 120.....Money To Lend
- REAL ESTATE**
 130.....Open Houses
 150-200.....For Sale
 160.....Lots & Acreage
 195.....Homes Wanted
 205-275.....Rentals
 285-290.....RV/Trailer Space

MISCELLANEOUS

- 300.....Jewelry
 310.....Tools & Heavy Equipment
 350.....Appliances
 360.....Furniture & HH Goods
 365.....Antiques & Collectibles
 375.....Misc. For Sale
 379-395.....Swap Meets & Garage Sales
 400.....Misc. Wanted
 430.....Arts & Crafts
- ANIMALS/LIVESTOCK**
 460.....Animal Boarding
 470.....Feed-Hay-Grain
 475-495.....Animal-Livestock
 485.....Pets & Supplies
- MARINE**
 500-525.....Marine
- AUTOMOBILE**
 535-595.....Automobile



WE GET RESULTS
 CALL **JAMIE** TODAY TO PLACE
 YOUR AD **503-325-3211**

or 800-781-3211 x231 • E-mail: classifieds@dailyastorian.com
 Web: www.dailyastorian.com

THE DEADLINE FOR CLASSIFIED ADS
 is 1 p.m. the day before your ad is scheduled to run

All classified ads require pre-payment

NEW TODAY!
 Look at these ads first

BioOregon Protein has an immediate opening for a **Production Worker**. Flexible hours. Apply in person at 1935 NW Warrenton Ave, Warrenton, OR 97146 or online at <https://www.pacsealfood.com/careers>. EEO and E-verify company.

Landscape Maintenance Person 1 year experience valid driver's license must be able to lift heavy objects P.O. Box 2573 Gearhart Or, 97138 503-738-2936

Largest Rummage Sale Pacific Grange
 90475 Hwy. 101, Warrenton
 Great treasures,
 January 27th, 28th, and 29th, 9am-4pm

LIZ DAVIS SALE
 FRIDAY, SATURDAY, 10-3,
 SUNDAY 10-2 (1/2 PRICE)
 524 HANEY CT.
**THE RESERVE GEARHART,
 OFF HIGHLANDS LANE.**
 One beautiful sale.
 Ethan Allen furniture to old cash registers.
 This sale has it all.
 See estatesale-finder.com

LOCAL DRIVER NEEDED.
 Class A CDL and one year of commercial driving experience required. Benefits package available. Pay DOE. Apply in person at Pacific Coast Seafood, 200 Railroad Way in Astoria (Tongue Point). Pre-employment screening required. EEO and e-verify company.

IF YOUR HOME has become overrun with pets, take courage. It's easy and economical to run a fast-acting classified ad which will attract people who are searching for a pet.

New Today

Master suite Seaside, Furnished. Everything included call for details (503)717-1486 \$550 month.

Tom's NW Landscaping Design and Construction
 •Irrigation
 •Tree Service
 •Hydroseeding
 •Lawn Rehabilitation
 •Lawn Maintenance
 •Landscaping Management
OLCB # 6328
 (503)738-7118 or (503)738-2936

45 Public Notices

Occasionally other companies make telemarketing calls off classified ads. These companies are not affiliated with The Daily Astorian and customers are under no obligation to participate. If you would like to contact the attorney general or be put on the do not call list, here are the links to both of them
Complaint form link:
<http://www.doj.state.or.us/finfraud/>

ADVERTISERS who want quick results use classified ads regularly.

50 Professional Services

John L. Scott REAL ESTATE
 Thinking of Buying or Selling?
Judy Hale
 John L Scott Real Estate-Seaside
 520-395-5866

70 Help Wanted

Astoria School District is seeking qualified applicants for a **School Nurse**, for more information visit <https://astoria.tedk12.com/hire/index.aspx>

BioOregon Protein has an immediate opening for a **Production Worker**. Flexible hours. Apply in person at 1935 NW Warrenton Ave, Warrenton, OR 97146 or online at <https://www.pacsealfood.com/careers>. EEO and E-verify company.

Landscape Maintenance Person 1 year experience valid driver's license must be able to lift heavy objects P.O. Box 2573 Gearhart Or, 97138 503-738-2936

70 Help Wanted

City of Warrenton is accepting applications for a **FT, Public Works Manager FSLA Exempt**. Salary Range 28, \$4966.26 - \$5749.06, PERS/OPSRP, AD&D Insurance, Medical, Vision and Dental Insurance and HSA, deferred compensation accounts, paid vacation, holidays and sick leave.

The Manager reports directly to the Public Works Director and supervises the Utility 1 and Utility 2 positions, aids in assessing and providing strategic plans to meet future departmental and community infrastructure needs; assists with budget preparation, schedules and assigns work, and supervises staff.

Position requires a valid driver's license, an Oregon Health Authority Water Distribution Level II Certification and a minimum of three (3) years progressively responsible experience managing a similar sized water.

Applications are available on the City of Warrenton website at <http://ci.warrenton.or.us/>, and at the City of Warrenton Municipal Center, 225 S Main Ave, Warrenton, OR 97146. **OPEN UNTIL FILLED.**

PELICAN PUB & BREWERY
HIRING NOW!
 The Pelican Pub & Brewery in Cannon Beach is now hiring Cooks, Prep Cooks, Dishwasher, Bussers, Hosts and Server. Full and Part Time positions. Apply in person at 1371 SW Hemlock, Cannon Beach or apply online at: <http://pelicanbrewing.com>

KUKUI HOUSE SERVICES
House Cleaner/Manager
 Mileage, Cell, Vacation, Supplementary Health & Eye Benefits
 PT to FT Start at \$15/hr+ Bonuses
 Organic Cleaning Products
 Must Work Wknds & Have Smart Phone
 Background check
www.kukuihouse.com
 503.828.9889
 Arch Cape, Cannon Beach Seaside, Gearhart

70 Help Wanted

LEAD CUSTOMER SERVICE REPRESENTATIVE
 Got office skills? Are you looking for a growth position? The Daily Astorian looking for someone to be a leader in our circulation department. Working in cooperation with the **circulation manager**, you will lead three other staff members with the mission to meet our reader's needs by making sure they get their newspapers or can log onto our website. You'll do this by running reports, leading the customer service reps by example, coordinating delivery and working with independent contractors. Hours are generally 8 am to 5 pm, Monday through Friday. Benefits include paid time off (PTO), insurances and a 401(k)/Roth 401(k) retirement plan. Drop off your resume and cover letter at The Daily Astorian, 949 Exchange Street, Astoria, or e-mail hr@eomediagroup.com

Local CPA Firm
 Seeks Office Assistant 25 to 30+ Hrs per Week QB's & payroll experience preferred. Competitive pay based on experience. Must pass background & drug test. Email resume to Seeking1greatjob@gmail.com

LOCAL DRIVER NEEDED.
 Class A CDL and one year of commercial driving experience required. Benefits package available. Pay DOE. Apply in person at Pacific Coast Seafood, 200 Railroad Way in Astoria (Tongue Point). Pre-employment screening required. EEO and e-verify company.

SUNSET EMPIRE PARK + RECREATION DISTRICT
 SEPRD is looking for an experienced, communicative and visionary individual to serve as our Maintenance Manager. This individual will be responsible for managing all maintenance needs and projects associated with construction, renovation and enhancement for all SEPRD facilities. More information at sunsetempire.com

GOLF GAME gone to pot? Sell those old clubs with a classified Ad.

The Seashore Inn is now hiring for the following full time positions:
Housekeepers
Front Desk
Laundry
Night Audit
The Seashore Inn in Seaside Needs you.
APPLY IN PERSON!
60 N. Prom., Seaside
Under new management

Tyack Dental Group seeks part time business office assistant/data entry. Required skills include excellent multi-tasking, basic secretarial skills, familiarity with computer and multi-line telephone. Starting pay 15 per hour with merit raises thereafter. **Please send resume to Tyack Dental Group 433 30th St. Astoria, OR 97103 (503) 338-6000**

HOME DELIVERY! Your Daily Astorian should arrive by 5:30 p.m. Monday through Friday. If it does not, please call us at 503-325-3211 or 1-800-781-3211.

Coastal Community Action Program
 Is seeking a full-time **Employment Specialist** to work out of their Long Beach office. Successful applicants will possess strong interpersonal skills to support quality client service delivery. Responsible for working with DVR and Supported Employment clientele with all employment needs within Pacific County, including: assessment, development, coaching, attainment and retention. **Full Job Description and application available at CCAP-1505 Pacific Ave N. Long Beach, WA 98631, 500 W. Robert Bush Drive South Bend, WA 98586. www.coastalcap.org or call 360-500-4556.** **Submit resume, cover letter and application to listed address or shawnam@coastalcap.org Position closing date 02/03/2017, 5 p.m.** CCAP is an EOE.

80 Work Wanted

JIM'S LAWN CARE
 •Brush Clearing•Lawns•Shrubs
 •Hauling•Gutter & Storm-Cleanup
 (503)325-2445 •Free Estimates

95 Schools & Education

IF YOU HAVE QUESTIONS about a **Business or School** Advertised, we advise you to call: **The Consumer Hotline** in Salem at (503)378-4320, 9 AM-1 PM, Monday-Friday or in Portland at (503)229-5576

LIVE OUTSIDE ASTORIA? To place your ad in the Daily Astorian Classifieds, simply dial:

1-800-781-3211
 It's fast and it's toll free!

100 Employment Information

ATTENTION READERS
 Readers respond to mail/phone order ads at their own risk. If in doubt about a particular offer, check with the Better Business Bureau or U.S. Postal Service before sending any money. **The Daily Astorian ASSUMES NO LIABILITY FOR MAIL ORDER ADVERTISERS.**

105 Business-Sales Op

Be an Astoria Carrier!
\$100 Signing Bonus!
 The Daily Astorian is currently seeking independent contractors to deliver its paper and related products in the Astoria Oregon area. Interested individuals must have valid drivers license, reliable vehicle, and insurance. Routes are Monday through Friday afternoons. There are no collections or weekend deliveries. Please come in person to The Daily Astorian office at 949 Exchange St, Astoria OR 97103 to pick up more information.

120 Money to Lend

NOTICE TO CONSUMERS
 The Federal Trade Commission prohibits telemarketers from asking for or receiving payment before they deliver credit repair services, advance fee loans and credit, and recovery services. If you are asked to render payment before receiving any of the preceding services, please contact the Federal Trade Commission at: 1-877-382-4357

BUDGET ADS
 Place your ad today | www.dailyastorian.com

1988 Ford F-150 Lariat \$1,000
 503-861-0989 or 503-440-3244

4 drawer file cabinet
 52"tall X15"X26" deep. \$20
 Small table 35"X19"wide
 adjustable height. \$20
 Sears Craftsman 3.0 10" blade table saw, attached with wheels. \$150
 (503)325-9711

Let your pockets "jingle" with extra cash from the Daily Astorian classifieds

Budget Ads
All items \$1000 or less can be sold in the budget section. \$9.00 for 11 words.
 If you have items to sell, give us a call today. (503)325-3211 ext. 231 or e-mail us at classifieds@dailyastorian.com

CROSSWORD by Eugene Sheffer

ACROSS
 1 Actor
 5 Rear part
 9 Low isle
 12 Rights org.
 13 New York canal
 14 Ms. Thurman
 15 Maximally
 17 Zing
 18 Consequence with oil
 19 They have their pride
 21 "Forget it!"
 22 Hearty drink
 24 Friend
 27 Bear hair
 28 One-dish meal
 31 Stephen of "Still Crazy"
 32 18-wheeler
 33 "Xanadu" band, for short
 34 Twain hero

DOWN
 37 Hay unit
 40 Yours truly
 41 Reaction to a pun
 43 Written in verse
 47 Klutz
 48 Reach adulthood
 51 Egg (Pref.)
 52 Grecian vessels
 53 Atop
 54 Shriner's chapeau
 55 Horn sound
 56 Saucy

Solution time: 26 mins.

S	A	R	A	V	A	N	F	I	N	N	
A	G	I	N	O	D	E	A	L	O	U	
L	U	C	K	Y	O	U	D	O	N	T	
K	A	H	L	U	A	R	E	E	V	E	
E	K	G	O	B	O	E					
A	R	A	S	E	N	B	U	Y	E	R	
W	I	F	I	R	A	M	T	O	G	A	
N	O	T	M	E	H	U	M	U	G	H	
E	I	R	E	D	A	Y					
P	O	R	T	A	L	B	I	O	N	I	C
A	N	Y	A	T	H	A	N	K	Y	O	U
S	O	O	T	O	A	T	E	R	T	E	
T	R	U	E	N	T	H	L	O	A	D	

Yesterday's answer 1-26

BUSINESS DIRECTORY
 YOUR GUIDE TO LOCAL PROFESSIONALS

ARBORIST

Bigby's Tree Service
ISA CERTIFIED ARBORISTS
 •Pruning
 •Removal
 •Stump Grinding
 •Excavator/Brush Rake
 •Vegetation Management
 (503)791-0767
bigbys tree service.com
 Affordable rates.
 CCB#158562

BOAT REPAIR

•OUTBOARD REPAIR•
 Clatsop Power Equipment
 34912 Hwy 101 Bus, Astoria
 1-800-220-0792 or 503-325-0792

BUILDERS

Jack Coffey Construction
 •New•Repair•Remodel
 •Drywall •Concrete •Decks
 •Licensed •Bonded •Insured
 (503)325-7406 • CCB#55284

LAWN & GARDEN

•JIM'S LAWN CARE•
 •Brush Clearing•Lawns•Shrubs
 •Hauling•Gutter & Storm-Cleanup
 (503)325-2445 •Free Estimates

VEGETATION MANAGEMENT

Bigby's Tree Service
 •Excavator mounted Flail Mower
 •Brush raking •Lot clearing
 •Scotch broom Removal
 •chipping •Invasive Species removal
 •Levee/Dike mowing
 •Low impact Logging.
 (503)791-0767
bigbys tree service.com
 Affordable rates.
 CCB#158562

ARBOR CARE TREE SPECIALISTS
 ISA Certified Arborists
 ISA Board-Certified
 Master Arborist
 ISA Tree Risk Assessment
 Qualified
 Comprehensive Service,
 Pruning/Removal,
 Stump Grinding/Hazard Evaluations
 (503)791-0853
www.arborcarenw.com
 CCB#171855
 WA#ARBORC1909RW
Care for Your Trees

Tom's NW Landscaping Design and Construction
 •Irrigation
 •Tree Service
 •Hydroseeding
 •Lawn Rehabilitation
 •Lawn Maintenance
 •Landscaping Management
OLCB # 6328
 (503)738-7118 or (503)738-2936

LET one of our friendly advisors help you word your classified ad. Call 503-325-3211.

PROFESSIONAL SERVICES

Rhema RV Repair
 Seaside, OR. 97138
 Offers on-site service and repair covering your RV, motorhome, travel trailer and camper needs.
 Call Mike 503-836-7859

Terry Marshall Bookkeeping Service
 (503)298-0750
 •Payables •Receivables •Payroll
 •Quarterly Reporting

Oregon Construction Contractor's Law requires that all those who advertise remodeling, repair or construction services be registered with the Construction Contractor's Board. Registration means contractors have bonds and insurance on the job site. For your protection, be sure any construction contractors you hire are registered. If they are not, or if you are a contractor who wishes to register, call Construction Contractor's Board in Salem, OR 1-503-378-4621.

JANRIC CLASSIC SUDOKU

Fill in the blank cells using numbers 1 to 9. Each number can appear only once in each row, column and 3x3 block. Use logic and process elimination to solve the puzzle. The difficulty level ranges from Bronze (easiest) to Silver to Gold (hardest).

Rating: BRONZE
 Solution to 1/25/17

3		9			8					
6	4			5		7				
5	2			7		9				
	4			6	2			7		
1	7		4		5		3			
8		3	7				2			
	1	7			2			8		
	5	2			7				6	
		8				3			4	

Rating: BRONZE
 Solution to 1/25/17

9	2	4	1	7	6	3	5	8		
5	3	7	8	9	2	6	1	4		
6	1	8	4	5	3	2	9	7		
8	9	3	2	6	7	5	4	1		
2	6	5	9	4	1	8	7	3		
4	7	1	5	3	8	9	6	2		
7	5	9	3	2	4	1	8	6		
3	8	6	7	1	9	4	2	5		
1	4	2	6	8	5	7	3	9		