

## Enter the cook-off, or just taste the chili

OYSTERVILLE, Wash. — The eighth annual Surfside Chili Cook-Off, Crafts Fair and Bake Sale is set for 11 a.m. Saturday, Oct. 8 at the Oysterville Schoolhouse, located at 3322 School Road.

This event runs rain or shine and includes live music, crafts and goodies. The bake sale and crafts items will be available from 11 a.m. to 2:30 p.m.

If you have a great recipe, or just want to come, taste and vote for your favorite chili, entry is free.

Chili entries will be accepted from 11 a.m. to noon, and the tasting and judging

will take place from 12:15 to 1:30 p.m.

Winners of the chili cook-off will be announced at 2 p.m., and there are prizes for first, second and third place.

There is a \$5 fee per table for craft vendors by reservation only; space is limited. Contact the Surfside Homeowners Association at 360-665-4171 for information and to register.

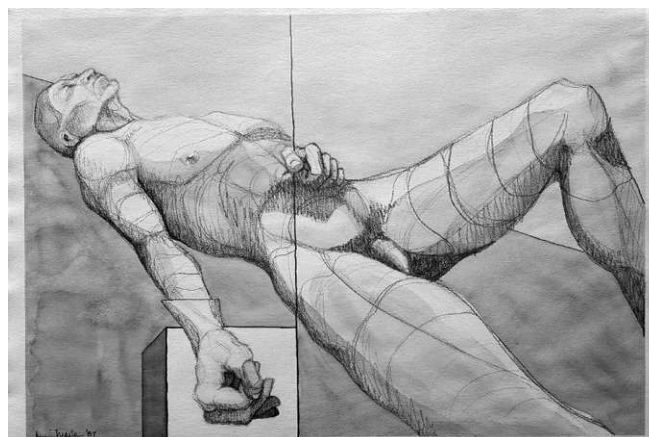
Any event proceeds for the Food4Kids Backpack Program. This event is sponsored by the Surfside Community Relations Committee.

## Astoria artist Linden brings 'The Tao of An: A Journey to Peace' to Imogen Gallery

ASTORIA — Known for her evocative abstraction, native-born Astoria artist Linden brings a new collection of paintings celebrating the life of her close friend and artistic mentor, An Marie, a longtime resident of Astoria. Along with her own paintings, Linden is sharing the work of An Marie, who was a gifted artist, quietly creating but seldom sharing her renderings of the human form. This will be the first and only time the work of these two women will be exhibited together. Proceeds from sales of An Marie's work will go to Astoria Visual Arts, a local nonprofit group supporting visual arts of which An was a founding member in 1989.

The exhibition opens during Astoria's Second Saturday Art Walk from 5 to 8 p.m. Saturday, Oct. 8 and will remain on display through Nov. 8. Linden will be present and available to talk about her work, and all are invited to join in this tribute of friendship shared through creativity.

For many artists, months, even years can go into preparing for a single exhibition. Most give careful thought to what they want to convey through a body of work, whether it's technical ability to capture light and form, mastering the beauty of landscape, or a message about humanity. For Linden, her focus for this series took a sharp turn at the death of her longtime friend An Marie. As anyone who has lost someone close knows, there is a process of coming to terms with something so definite. For Linden, who is an intuitive painter, the loss had a profound impact on her creative process. She



SUBMITTED PHOTO

"Reclining Male" by An Marie at Imogen Gallery.

eventually realized the only way to move forward was to incorporate her struggle of loss through painting. This series of work is a celebration of life as well as a physical manifestation of transition and stages of grief.

Linden usually conveys thought and idea through abstraction, allowing her the freedom to thoroughly explore the visual language by reducing known forms to suggestion of content. For this series she incorporates memory and metaphor to provide a window of who An was. About An and her work, Linden states, "An's art was rarely seen by the public. I was amazed at the quality and quantity of the drawings she had saved in the flat files I inherited at her passing — this body of work, just her drawings, took me three days to go through and reintroduced me to her vast talent as an artist. The work chosen to share with you here is what I consider to be an inclusive retrospective of her evolving style over the years."

About her own body of work, Linden says: "The death of my close friend and artistic mentor, An Marie, focused the ener-



SUBMITTED PHOTO

"Dancer" by An Marie at Imogen Gallery.

gy of the paintings in this collection on the journey of an artist in transition. My profound sense of loss is reflected in these works, both in grief and in the memory of the Tao of friendship."

Within this series is the reflection of an individual's life and travels, spiritual beliefs and interests that were cultivated over a life time. With a marked path of process, intentional by the artist, there is clear and poignant evidence of evolution from dark to light. This is a loving and personal tribute of passing and/or transition: "The Tao of An: A Journey to Peace."

Beginning her studies at Clatsop Community College, Linden sites instructors the late Royal Nebeker and Roy Garrison as instrumental in her development as a fine artist. She continued her studies at Pacific Northwest College of Art where she earned a Bachelor of Fine Arts, focusing both on painting and sculpture. Relocating to the Bay Area in the late '90s, Linden continued her career while also teaching. In Benicia, California she founded a school dedicated to the education of all fine art practices for all ages. Linden opened the school under the premise that "the innate creativity that we have as children isn't ever really lost. It just needs to be fed so it can blossom." The Linden Tree is still in operation today with the same mission.

She has exhibited throughout the Northwest as well as further locales, including Chicago. She began her local exhibition career at the former Ricciardi Art Gallery in 1996. Some of her accomplishments include a Juror's Award for sculpture created for the 2003 Journey's End International Art Exhibition held at Clatsop County Heritage Museum. Her work has also been juried into the "Around Oregon" annual exhibition, in both 2014 and 2015, held at the Art Center in Corvallis. She is also proud to have her work included in the permanent collection of Clatsop Community College, Pacific Northwest College of Art and the Astoria Public Library.

Imogen Gallery is located at 240 11th St. For more information, call 503-468-0620 or visit [www.imogen-gallery.com](http://www.imogen-gallery.com)

## EVENTS

OCT. 14 \* 8PM  
**Jesse Lee Falls Band**  
Port of Call Bistro & Bar

Free  
@ Port of Call  
Bistro & Bar



Funk/Punk/Rock  
Music samples on  
[reverbnation.com](http://reverbnation.com)

OCT. 15 \* 7PM  
**KLEVERKILL**  
Astoria Event Center



Tickets \$8

OCTOBER 8 \* 8PM

**PRESSURE**



Enter the silent  
auction for this  
33-year old  
drawing!



Doors Open at 7PM

\$5  
SUGGESTED  
DONATION

**Eric Turner Mike Smith Bruce Smith**  
**Roctober 8th**  
Astoria Event Center  
894 Commercial St  
Astoria, Or

**30ish Year Re-Union**  
Suggested Donation \$5 Minimum  
OPEN 7PM - SHOWTIME 8PM  
KCRX  
The Classic Rock Station  
21 & OVER

**PORT OF CALL BISTRO & BAR**  
894 COMMERCIAL STREET  
503\*325\*4356