

Artist explores the tension between beauty and inelegance

Clatsop Community College hosts new art exhibit by Laura Viola-Preciado

ASTORIA — The Clatsop Community College Royal Nebeker Art Gallery will open its 2016-17 exhibition season with “The Beauty of Inelegance,” a solo exhibition by Laura Viola-Preciado. Selected to exhibit in the 2016 “Au Naturel” competition by Lisa Harris, director and owner of Lisa Harris Gallery in Seattle, Viola-Preciado was also chosen by the art department faculty to receive the coveted prize of a solo exhibition.

The show will open Monday, Sept. 26 and run through Nov. 3, with a reception for the artist scheduled for 6 p.m. Oct.

6. The gallery reception and exhibit are free and open to the public.

In conjunction with this exhibit, Viola-Preciado will conduct a workshop entitled “Small is Big! Rethinking the Expected Format of Abstract Painting.” In this workshop, participants will explore how to create individual small paintings that can be shown alone, in groupings, or as a starting point for larger work. In this productive, hands-on session, participants will practice letting go of expectations in order to focus on process and to capture an energetic moment within a small space.

The workshop will be held 10:30 a.m. to 3:30 p.m. Oct. 7, with a one-hour lunch break and will take place in the Drawing/Painting Studio, Room 112 of the CCC Art Center.

This workshop is free to CCC students enrolled in fall term art classes and open to the general public



SUBMITTED PHOTO

An untitled monotype by Laura Viola-Preciado.

for a \$20 fee. Space is limited, and pre-registration is required. For a materials

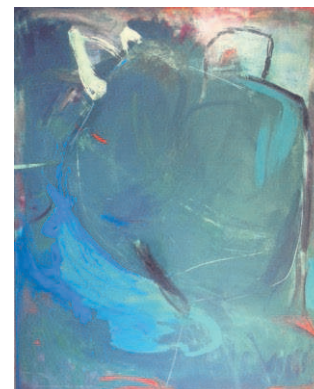
list and to register, contact Kristin Shauck at 503-338-2472 or kshauck@clatsop-cc.edu

Viola-Preciado considers the Pacific Northwest home and currently resides on Whidbey Island in



SUBMITTED PHOTO

“Wired,” a monotype by Laura Viola-Preciado.



SUBMITTED PHOTO

“Stuffed,” an acrylic painting by Laura Viola-Preciado.

Washington. She recently graduated with a Bachelor of Fine Arts, summa cum



SUBMITTED PHOTO

“Lipid Panel,” a work of acrylic and spray paint, by Laura Viola-Preciado.

laude, from the Hartford Art School after studying at The Oregon College of Art and Craft and Anderson Ranch, earning merit scholarships and awards from both colleges. Viola-Preciado actively exhibits her work and is represented in collections on both the East and West Coasts.

Viola-Preciado’s work emerges as she investigates our “awkward place in the world” through the process of applying and removing paint and juxtaposing large brushstrokes and pours with scribbles and outlines. Searching for what she describes as “the tension between beauty and inelegance,” Viola-Preciado’s work offers more questions than answers and invites viewers to draw their own conclusions.

In addition to her paintings, Viola-Preciado will also be exhibiting monotypes, a printmaking technique that lends itself to uninhibited painterly intensity and spontaneous brushwork.

The CCC Royal Nebeker Art Gallery is located at 1799 Lexington Ave. and is open from 8 a.m. to 5 p.m. Monday through Friday, and on weekends and holidays by appointment.

The Franklin Apartments



Providing Elegance & Efficiency to Downtown Astoria for Over 100 Years

1432 Franklin Avenue
Easom Property Management, Inc.

503-325-5678

BLUES and Seafood

Jimmy Thackery

Norman Sylvester

Bottleneck Blues Band

North Coast Blues and the Cadillac Horns

The Tracey Fordice Band

Billy D & the Hoodoos

Natty Bone

Ilwaco HS Jazz Band All Star Jam



PORT OF ILWACO 2016

TICKETS: bluesandseafood.com

FRIDAY-SATURDAY SEPT. 23 24

Crossword Answer

T	P	S		C	D	S		P	O	S	T	E	D		S	U	B				
H	U	T		T	R	E	A	T	Y		E	S	C	H	E	W	W	H	O		
E	S	E		H	O	N	C	H	O		P	H	O	E	N	I	X	A	-	Z	
W	H	E	R	E	A	S		E	D	S		A	U	F			I	T	O	O	
B	-	L	I	S	T	E	R	P	A	C	K		R	E	D	F	I	S	H		
	U	G	L	I		R	I	O		R	I	M		N	O	R					
Y	P	R	E	S		G	-	R	A	T	E	D	C	H	E	E	S	E			
E	B	A	Y		W	H	I	P	U	P		R	U	E		E	V	A	D	E	
P	R	Y		T	I	E	D	O	N		S	I	N	S		W	I	V	E	S	
	A	S	S	I	S	I		W	E	A	N	S		L	I	N	E	N	S		
		A	M	E	R	I	C	A	N	G	O	T	H	I	-	C					
M	E	W	L	E	D		T	O	Y	O		A	F	F	E	C	T				
A	R	I	A	L		I	S	M	S		A	V	A	N	T	I		R	A	W	
G	I	T	M	O		M	O	I		B	R	I	N	G	S		T	O	K	E	
	C	H	I	C	K	E	N	C	O	-	O	P	S		T	O	P	E	D		
		K	O	A		S	O	B		L	O	X		O	R	C	S				
	C	H	A	S	I	N	G		M	O	V	I	N	G	A	-	S	I	D	E	
F	L	A	B		T	U	T		Y	I	N		A	N	D	O	R	R	A		
L	O	-	C	A	L	H	E	R	O		S	E	E	M	T	O		C	U	T	
A	S	H		W	E	A	S	E	L		A	S	S	E	S	S		L	G	A	
P	E	A		W	E	T	T	E	D			P	S	Y			E	S	T		