

www.StirlingHonda.com

LEASE SPECIALS



2016 HONDA CR-V CVT AWD LX #H6-1504



\$199/MO

36 month lease
\$3,199 due at signing

Only for residents of: AL, AK, AR, No Calif., CO, DC, GA, HI, ID, IL, IN, KS, KY, LA, MD, MS, MO, NE, NC, OK, OR, SC, TN, TX, UT, VA, WA, WV, WY.

Closed end lease for 2016 CR-V CVT 2WD LX (RM3H3GEW) available from September 7, 2016 through October 31, 2016, to well-qualified lessees approved by Honda Financial Services. Not all lessees will qualify. Higher lease rates apply for lessees with lower credit ratings. MSRP \$24,745.00 (includes destination, excludes tax, license, title, registration, documentation fees, options, insurance and the like). Actual net capitalized cost \$20,960.55. Net capitalized cost includes \$595 acquisition fee. Dealer contribution may vary and could affect actual lease payment. Total monthly payments \$7,164.00. Option to purchase at lease end \$16,094.45. Must take new retail delivery on vehicle from dealer stock by October 31, 2016. Lessee responsible for maintenance, excessive wear/tear and 15¢/mile over 12,000 miles/year for vehicles with MSRP less than \$30,000, and 20¢/mile over 12,000 miles/year for vehicles with MSRP of \$30,000 or more. See your Honda dealer for complete details.

2017 HONDA ACCORD CVT LX #H7-1010



\$209/MO

36 month lease
\$1,999 due at signing

Closed end lease for 2017 Accord Hybrid CVT Hybrid (CR6F3HEW) available from September 7, 2016 through October 31, 2016, to well-qualified lessees approved by Honda Financial Services. Not all lessees will qualify. Higher lease rates apply for lessees with lower credit ratings. MSRP \$30,440.00 (includes destination, excludes tax, license, title, registration, documentation fees, options, insurance and the like). Actual net capitalized cost \$24,508.75. Net capitalized cost includes \$595 acquisition fee. Dealer contribution may vary and could affect actual lease payment. Total monthly payments \$3,324.00. Option to purchase at lease end \$16,437.60. Must take new retail delivery on vehicle from dealer stock by October 31, 2016. Lessee responsible for maintenance, excessive wear/tear and 15¢/mile over 12,000 miles/year for vehicles with MSRP less than \$30,000, and 20¢/mile over 12,000 miles/year for vehicles with MSRP of \$30,000 or more. See your Honda dealer for complete details.

2016 HONDA CIVIC SEDAN CVT LX #H6-1122



\$179/MO

36 month lease
\$1,999 due at signing

Closed end lease for 2016 Civic Sedan CVT LX (FC2F5GEW) available from September 7, 2016 through October 31, 2016, to well-qualified lessees approved by Honda Financial Services. Not all lessees will qualify. Higher lease rates apply for lessees with lower credit ratings. MSRP \$20,275.00 (includes destination, excludes tax, license, title, registration, documentation fees, options, insurance and the like). Actual net capitalized cost \$15,497.00. Net capitalized cost includes \$595 acquisition fee. Dealer contribution may vary and could affect actual lease payment. Total monthly payments \$3,324.00. Option to purchase at lease end \$12,367.75. Must take new retail delivery on vehicle from dealer stock by October 31, 2016. Lessee responsible for maintenance, excessive wear/tear and 15¢/mile over 12,000 miles/year for vehicles with MSRP less than \$30,000, and 20¢/mile over 12,000 miles/year for vehicles with MSRP of \$30,000 or more. See your Honda dealer for complete details.

2016 HONDA FIT CVT LX #H6-1456



\$149/MO

36 month lease
\$2,199 due at signing

Closed end lease for 2016 Fit CVT LX (GKSH5GEW) available from September 7, 2016 through October 31, 2016, to well-qualified lessees approved by Honda Financial Services. Not all lessees will qualify. Higher lease rates apply for lessees with lower credit ratings. MSRP \$17,525.00 (includes destination, excludes tax, license, title, registration, documentation fees, options, insurance and the like). Actual net capitalized cost \$11,040.75. Net capitalized cost includes \$595 acquisition fee. Dealer contribution may vary and could affect actual lease payment. Total monthly payments \$3,324.00. Option to purchase at lease end \$11,040.75. Must take new retail delivery on vehicle from dealer stock by October 31, 2016. Lessee responsible for maintenance, excessive wear/tear and 15¢/mile over 12,000 miles/year for vehicles with MSRP less than \$30,000, and 20¢/mile over 12,000 miles/year for vehicles with MSRP of \$30,000 or more. See your Honda dealer for complete details.



Certified Pre-Owned



2014 HONDA CIVIC SEDAN EX #H7-1012A



Stirling sale price
\$18,488

10k miles, moon roof, alloy wheels.



2014 HONDA ODYSSEY EX-L #H6-1218A

Stirling sale price
\$29,888

Leather, moon roof, loaded!

2016 HONDA HR-V LX #H7346



Stirling sale price
\$24,888

3k miles.



2015 HONDA CR-V EX-L #H7325

Stirling sale price
\$26,488

Only 15k miles, moon roof, leather.

HONDA PRE-OWNED VEHICLES

2011 HONDA CR-Z #H6-1412A



Stirling sale price
\$8,488

Gas saver, 1 owner.

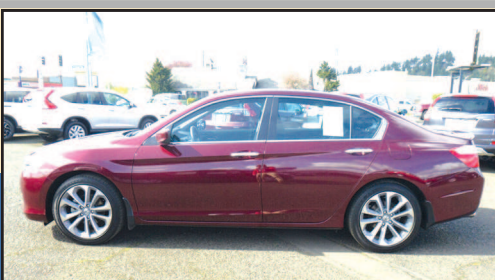


2010 HONDA CR-V EX-L #H6-1286A

Stirling sale price
\$18,888

1 owner, only 36k miles, moon roof, leather.

2014 ACCORD SPORT #H7314



Stirling sale price
\$19,948

15k miles, 1 owner.



2014 HONDA ACCORD HYBRID #H6-1389

Stirling sale price
\$21,888

1 owner, amazing gas mileage.

2014 HONDA ODYSSEY EX-L (w/NAVIGATION) #H7321

Stirling sale price
\$30,888

19k miles, leather, navigation, loaded.



1100 VANDERCOOK WAY | LONGVIEW
www.StirlingHonda.com | 877.834.7352