

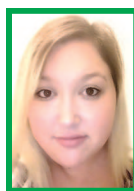
Classifieds

THE DAILY
ASTORIAN

CLASSIFIED INDEX

- ANNOUNCEMENTS**
035.....Lost & Found
040.....Personals
050.....Professional Services
061.....Bankruptcy
- EMPLOYMENT**
060.....Babysitters, Child Care
070.....Help Wanted
080.....Work Wanted
- FINANCIAL**
105-106.....Business For Sale-Sales Op
120.....Money To Lend
- REAL ESTATE**
130.....Open Houses
150-200.....For Sale
160.....Lots & Acreage
195.....Homes Wanted
205-275.....Rentals
285-290.....RV/Trailer Space

- MISCELLANEOUS**
300.....Jewelry
310.....Tools & Heavy Equipment
350.....Appliances
360.....Furniture & HH Goods
365.....Antiques & Collectibles
375.....Misc. For Sale
379-395.....Swap Meets & Garage Sales
400.....Misc. Wanted
430.....Arts & Crafts
- ANIMALS/LIVESTOCK**
460.....Animal Boarding
470.....Feed-Hay-Grain
475-495.....Animal-Livestock
485.....Pets & Supplies
- MARINE**
500-525.....Marine
- AUTOMOBILE**
535-595.....Automobile



WE GET RESULTS
CALL **JAMIE** TODAY TO PLACE
YOUR AD **503-325-3211**

or 800-781-3211 x231 • E-mail: classifieds@dailyastorian.com
Web: www.dailyastorian.com

THE DEADLINE FOR CLASSIFIED ADS
is 1p.m. the day before your ad is scheduled to run
All classified ads require pre-payment

P.O. Box 210 | 949 Exchange St. | Astoria, Oregon | www.dailyastorian.com

NEW TODAY!
Look at these ads first

Current openings for an experienced
-Log Truck Driver
-Rigging Guys
-Delimber Operator
-Shovel Operator
Drivers must have CDL and current medical card. Medical/Dental and 401K benefits available after probationary period.
To complete an application, please apply Mon-Fri from 8:00am to 4:00pm., or mail/fax your resume to:
Jerry DeBriac Logging Co., INC.
P.O. Box 182
45 Elochoman Valley Road
Cathlamet, Wa. 98612
Ph# (360)795-3309
Fax# (360)795-3847

CLASSIFIED ADS work hard for you. Try one today!

ERROR AND CANCELLATIONS
Please read your ad on the first day. If you see an error, The Daily Astorian will gladly re-run your ad correctly. We accept responsibility for the first incorrect insertion, and then only to the extent of a corrected insertion or refund of the price paid. To cancel or correct an ad, call 503-325-3211 or 1-800-781-3211.

New Today

The Bridge to Success begins with you!
Join one of the most dedicated staff teams on the North Coast!
MTC offers an excellent benefits package with both company paid and optional benefits. 401(k) fully vested after one year. We offer 11 paid holidays, three weeks of vacation, and two weeks of sick time.
Submit an electronic application for consideration!
To Apply: Go to mtctrains.com; select Careers and the Tongue Point Location.
The following positions are currently open:
Campus Security Officer -- Student Activities Specialist -- Residential Advisors -- On-Call Residential Advisors -- Part Time Recreation Advisor.
Who we are: Tongue Point Job Corps Center is operated by Management & Training Corporation (MTC) for the U.S. Department of Labor. Our staff teach 473 youth, ages 16-24, the academic, technical training, employability, and social skills needed to become successful.
Management & Training Corporation is an Equal Opportunity Employer Minorities/Females/Disabilities/Veterans
MTC Values Diversity!
Tongue Point is a drug-free workplace and has a tobacco-free campus.

35 Lost & Found

\$SREWARD\$
Three 9 week old kittens missing since Monday July 18th from 26th & Grand, Astoria.
Possible sightings near Home Bakery, 28th & Marine Dr. If found or if you have any information please text or call Carolyn- 360-777-0000 or please call Rita- 503-861-2003
\$SREWARD\$

Summer Days Sale \$39.99
HAVE A YARD SALE!!
• make end of summer trip \$\$\$
• cash for school clothes
• clean out & organize before busy Fall
Ads need to be in 1pm the day before the ad runs.
503-325-3211 x231
or email your info to classifieds@dailyastorian.com
Unlimited words (100) Bold, Box, color included 2 days in print & online!

New Today

Roby's Furniture & Appliance
Roby's Furniture & Appliance full-time Delivery/Warehouse position.
Requires heavy lifting. Good customer service skills are required.
Apply in person.
1535 Commercial St, Astoria
503-325-1535

45 Public Notices

Occasionally other companies make telemarketing calls off classified ads. These companies are not affiliated with The Daily Astorian and customers are under no obligation to participate. If you would like to contact the attorney general or be put on the do not call list, here are the links to both of them
Complaint form link: <http://www.doj.state.or.us/finfraud/>

61 Bankruptcy

BANKRUPTCY \$275
26 Years Experience
(503)440-0281 / (503)678-7939

70 Help Wanted

Experienced framer needed for framing contractor.
contact Tim @ 509-688-7793

Looking for experienced parts person and U-Haul assistant. Part Time.

Send reply to
Box 248, c/o Daily Astorian,
P.O. Box 210,
Astoria, OR 97103

Full time/Half time Truck driver: Class A CDL, medical card, on road/off road experience required. Call 503-791-7038.

70 Help Wanted



Assistant Mailroom Supervisor: Opportunity to work full-time in our packaging and distributing department at The Daily Astorian. Duties include using machines to process printed materials, organize workflow and perform clerical and supervisory tasks. Must be able to regularly lift 40 lbs. in a fast paced environment. Mechanical aptitude helpful and the ability to lead others is required.
Pre-employment drug test required.

Pick up an application at The Daily Astorian 949 Exchange Street or send resume and letter of interest to EO Media Group, PO Box 2048, Salem, OR 97308-2048, fax (503)371-2935 or e-mail hr@emediagroup.com.

Billing Clerk
Great opportunity with benefits. Strong computer skills. Up to \$15/hour DOE
Contact HR Dept. 877-523-5564

Bill's Tavern and Brewhouse is hiring for:
-Line Cook, PT/Nights/Weekends
-Bussers PT
Please apply in person at 188 N Hemlock, Cannon Beach. 503-436-2202

Clatsop Community College is recruiting for the following positions:

Custodial/Maintenance Assistant
- Full time: graveyard shift; closing date: 8/22/16
Buyer/Lead Clerk for College Store
- Half-time position; closing date: 8/29/16

View job descriptions/qualifications and apply on-line at www.clatsopcc.edu

Contact the Office of Human Resources at (503) 338-2406 if application assistance is needed. AAEEO

Concrete Workers Needed
Experience preferred. Valid OD, and pre-drug screening. Call (503)861-2285 or email to rpronconcrete@aol.com

Current openings for an experienced
-Log Truck Driver
-Rigging Guys
-Delimber Operator
-Shovel Operator
Drivers must have CDL and current medical card. Medical/Dental and 401K benefits available after probationary period.
To complete an application, please apply Mon-Fri from 8:00am to 4:00pm., or mail/fax your resume to:
Jerry DeBriac Logging Co., INC.
P.O. Box 182
45 Elochoman Valley Road
Cathlamet, Wa. 98612
Ph# (360)795-3309
Fax# (360)795-3847

Full time sales person needed at Ter Har's Clothing in Seaside and Cannon Beach. Apply in person.

Laborers/Pipe Layers
Experience preferred, drug free, prevailing wages,
EarthWorks Excavation
Call 503-398-2814 for more information.

Roby's Furniture & Appliance
Roby's Furniture & Appliance full-time Delivery/Warehouse position.
Requires heavy lifting. Good customer service skills are required.
Apply in person.
1535 Commercial St, Astoria
503-325-1535

70 Help Wanted



McMenamins Sand Trap Pub & Gearhart Hotel is NOW HIRING!
We are hiring for all positions, but our greatest needs are for **Line Cooks, Prep Cooks, Servers, Catering Servers, and Hosts/Food Runners.** We have both seasonal and long-term positions available.
What we need from you:
An open and flexible schedule, including days, evenings, weekends, and holidays; A love of working in a busy, customer service-oriented environment; Previous experience is a plus!
Please apply online 24/7 at www.mcmenamins.com or pick up a paper app at any McMenamins location.
Mail to 430 N. Killingsworth, Portland OR, 97217 or fax: 503-221-8749.
Call 503-952-0598 for info on other ways to apply.
Please no phone calls or emails to the location! E.O.E.

Port of Astoria Administration Office is now accepting applications for a full-time Administrative Assistant.
Visit the Port of Astoria Website at www.portofastoria.com

Remodeling, Maintenance and Secretary/Bookkeeping positions available. Full and Part time.
Call Stephan at 503-436-2306

TDX Construction LLC is looking for qualified Laborers and/or Skilled Workers. Must have own hand tools and transportation. Rate of pay DOE.
Contact Darious: 503-739-1477

The City of Astoria's Parks and Recreation Department invites qualified contractors to submit proposals to inventory and catalogue all the trees the Parks and Recreation Department is responsible for.
Proposals are due no later than 4pm on September 2nd at 1555 W. Marine Dr. Astoria Oregon 97103, with attention to Jonah Dart-McLean, Parks Maintenance Supervisor.
Proposals may be mailed, hand-delivered, or emailed to jdart@astoria.or.us.
For questions, call 503-741-1600

Specialty Services
We urge you to patronize the local professionals advertising in The Daily Astorian Specialty Services. To place your Specialty Services ad, call 325-3211.

The Northwest Oregon Housing Authority in Warrenton is accepting applications for the following positions:
Maintenance Supervisor: Will supervise a maintenance crew in maintaining over 175 units in Clatsop, Columbia, and Tillamook Counties. Is a member of the management team.
Housing Specialist Inspector: Performs all case management and inspection duties associated with the Section 8 rental assistance program(s) for an assigned caseload in a high production environment.
Both positions are fulltime with benefits and must be able to travel. For more information contact 503-861-0119 ext. 111 or www.nwoha.org.

Application deadline is Friday August 19, 2016, at 4:00 pm.

The Tides is hiring Housekeepers. End of Summer Bonus!
Apply in person at 2316 Beach Drive Seaside. Average working days range from 10am-3pm.

70 Help Wanted

Clatsop Community Action Community Resource Desk

Clatsop Community Action (CCA) provides supportive services to struggling individuals and their families. CCA values its positive relationships with other community partners that have proven essential in order to address the many needs that our clients may face to become healthy, safe and self-sufficient members of the community.
Clatsop Community Action (CCA) is seeking to hire and support a full-time, 40-hour/week employee who will work onsite at Providence Seaside Hospital to provide ease of access for all those who need direct supportive housing, energy assistance and general information and Referral for services offered by CCA and other community resources throughout the County. The Community Resource Desk Employee must provide information, referrals and advocacy where appropriate, in a warm, non-judgmental, professional manner.

Job Requirements:
• Working knowledge of Microsoft Word, Excel, PowerPoint, Outlook, Experience in a social service setting preferred.
• Bi-lingual Spanish-speaking and writing

Any job offer will be contingent upon the results of an updated background investigation and a drug screen.

For a full job description please contact CCA at 503-325-1400 Ext. 1035 or by contacting Elaine Bruce, ebruce@ccaservices.org

CROSSWORD by Eugene Sheffer

- ACROSS**
1 Mac-Donald's place
5 Branch
8 Venus de —
12 "Got it"
13 Kanga's kid
14 Always
15 Caboose
16 Soften food by soaking
18 Wisconsin's capital
20 Slow, in music letters
21 "Fresh Air" aier
22 Early hrs.
23 New Orleans sandwich
26 Augusta golf toumey
30 "Exodus" hero
31 Petrol
32 Carnival city
33 Chatter-boxes
36 Rascal
38 Resistance unit
- DOWN**
1 Mattress option
2 Cruising
3 Peruse
4 Spanish wool
5 Knight wear
6 Reddish horse
7 Soft shoe, for short
8 Minimum great
9 Tennis Lendl
10 Riga resident
11 Black-and-white cookie
17 Stately trees
19 Covert agent
22 Small batteries
23 Actress Dawber
- 24 — pro nobis
25 Ginormous
26 More (Sp.)
27 Historic time
28 Edge
29 Soak (up)
31 Prized possession
34 Thick soup
35 Denny's rival
36 Sun. talk
37 Roman orator
39 Vatican-related
40 Cupid's specialty
41 In — land
42 Robert of "The Sopranos"
43 Not worth debating
44 Mountain ht.
45 Staffer
46 Cold War initials
48 "Kid-napped" monogram

Solution time: 22 mins.

| | | | | | | | | | | |
|---|---|---|---|---|---|---|---|---|---|---|
| A | D | A | M | H | U | B | P | F | O | S |
| S | E | R | A | Y | S | L | E | R | O | C |
| T | E | A | L | P | O | O | H | P | O | O |
| I | M | B | I | B | E | C | A | P | U | T |
| | | | | B | O | R | G | R | E | F |
| O | C | C | U | P | T | I | E | D | R | E |
| B | A | H | S | O | N | A | R | O | S | U |
| I | D | O | S | N | O | N | E | S | U | C |
| | | | O | A | K | A | G | E | E | |
| A | R | C | T | I | C | L | L | A | M | A |
| M | A | H | I | M | A | H | I | C | A | R |
| E | T | O | N | R | A | N | O | N | T | O |
| R | E | O | S | E | G | G | W | E | S | T |

Yesterday's answer 8-16

| | | | | | | | | | | |
|----|----|----|----|----|----|----|----|----|----|----|
| 1 | 2 | 3 | 4 | 5 | 6 | 7 | 8 | 9 | 10 | 11 |
| 12 | | | | 13 | | | | 14 | | |
| 15 | | | | 16 | | | 17 | | | |
| 18 | | | 19 | | | | 20 | | | |
| 21 | | | | | | 22 | | | | |
| 23 | 24 | 25 | | | 26 | | | 27 | 28 | 29 |
| 30 | | | | 31 | | | | 32 | | |
| 33 | | | 34 | 35 | | | 36 | 37 | | |
| 38 | | | | | | 39 | | | | |
| 40 | 41 | 42 | | | 43 | | | 44 | 45 | 46 |
| 47 | | | | 48 | | | | 49 | | |
| 50 | | | | 51 | | | | 52 | | |
| 53 | | | | 54 | | | | 55 | | |

JANRIC CLASSIC SUDOKU

Fill in the blank cells using numbers 1 to 9. Each number can appear only once in each row, column and 3x3 block. Use logic and process elimination to solve the puzzle. The difficulty level ranges from Bronze (easiest) to Silver to Gold (hardest).

Rating: SILVER

| | | | | | | | | | | |
|---|---|---|---|---|---|---|---|---|--|---|
| | | | 7 | 5 | 3 | | 9 | | | |
| 2 | | 7 | | | | | | | | 8 |
| | | 4 | | 6 | | 5 | | | | |
| | | | | 2 | 7 | | 4 | | | |
| 6 | | 2 | | | | 7 | | 9 | | |
| | 4 | | 5 | 1 | | | | | | |
| | | 3 | | 8 | | 9 | | | | |
| 8 | | | | | | 3 | | 4 | | |
| | 2 | | 6 | 3 | 9 | | | | | |

Solution to 8/15/16

| | | | | | | | | | | |
|---|---|---|---|---|---|---|---|---|---|--|
| 7 | 2 | 1 | 3 | 9 | 8 | 6 | 5 | 4 | | |
| 9 | 4 | 8 | 1 | 5 | 6 | 7 | 8 | 2 | 3 | |
| 5 | 3 | 6 | 2 | 4 | 7 | 8 | 9 | 1 | | |
| 3 | 7 | 9 | 4 | 8 | 5 | 2 | 1 | 6 | | |
| 6 | 5 | 2 | 9 | 3 | 1 | 4 | 7 | 8 | | |
| 1 | 8 | 4 | 6 | 7 | 2 | 5 | 3 | 9 | | |
| 2 | 9 | 3 | 5 | 6 | 4 | 1 | 8 | 7 | | |
| 4 | 1 | 7 | 8 | 2 | 9 | 3 | 6 | 5 | | |
| 8 | 6 | 5 | 7 | 1 | 3 | 9 | 4 | 2 | | |