

INSIDE: TAKE A LOOK AT WHO'S WHO AND PROPERTY LINES

DOOR TO THE PAST

Two tours of historic Flavel mansion on tap in August

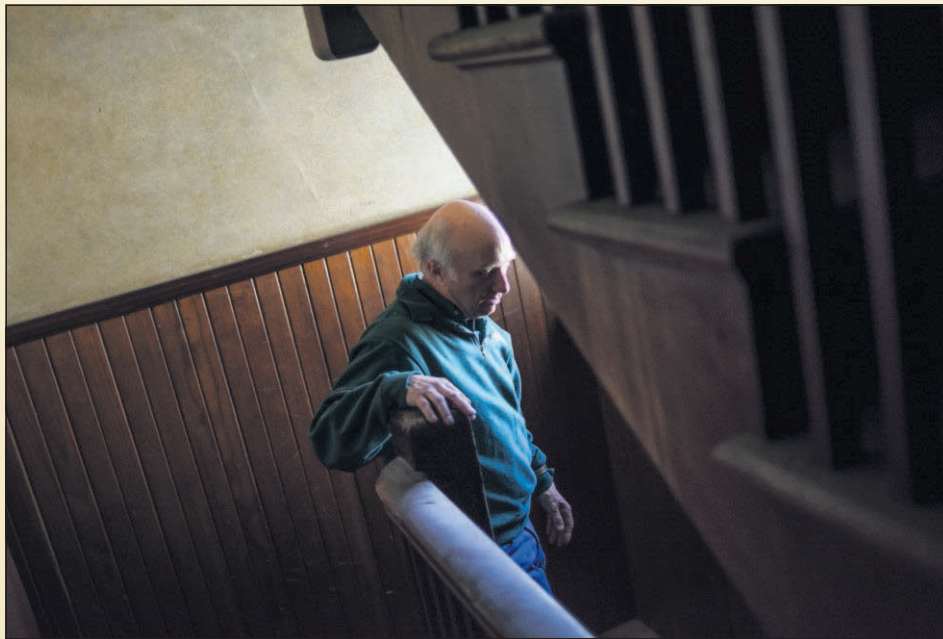
By ERICK BENGEL
The Daily Astorian

The 115-year-old Flavel mansion, known for decades as a house of mystery and a symbol of faded glory, will open to the public next month.

Greg Newenhof, who bought the iconic residence at 15th Street and Franklin Avenue last year and plans to make it his home, is hosting two fundraising tours with Clatsop County Historical Society Executive Director McAndrew Burns and John Goodenberger, a local historian and expert in historic preservation.

Some people have waited many years to see the interior, Burns said. Only the

See TOURS, Page 8A

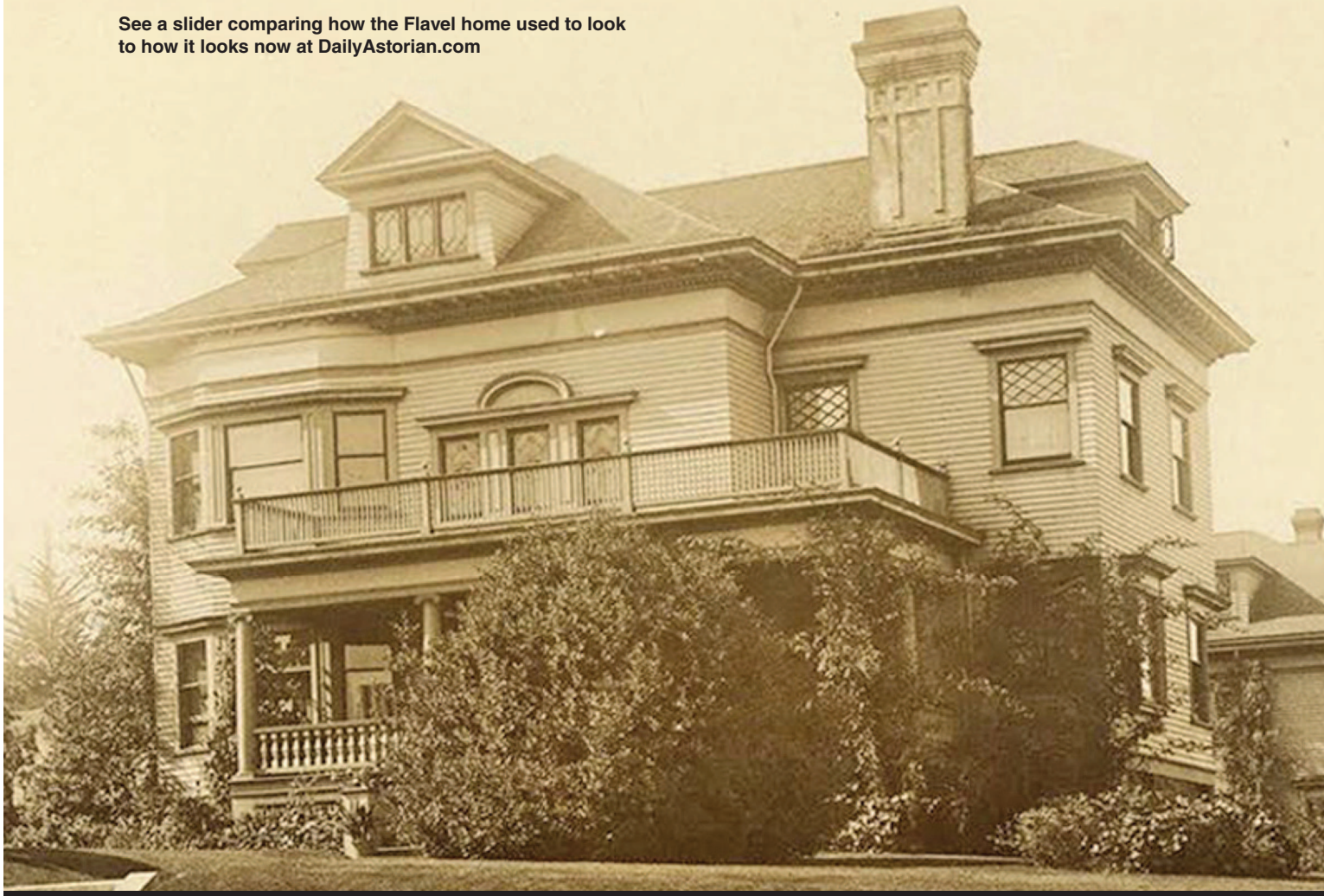


Danny Miller/The Daily Astorian

Greg Newenhof, owner of the Flavel home located on 15th Street and Franklin Avenue, walks down the stairs. Newenhof has been working to restore the home and will open the historic house's doors to the public for tours in August.

MORE ONLINE

See a slider comparing how the Flavel home used to look to how it looks now at DailyAstorian.com



Review deal nixed over contractor's ODOT ties

Legislators say work will move forward on funding package

By PARIS ACHEN
Capital Bureau

SALEM — The state plans to nix a contract for a long-awaited review to assess the readiness of the Oregon Department of Transportation for a massive influx of funds next year.

The decision came after stakeholders and the Senate Minority Leader Ted Ferrioli, R-John Day, expressed concerns over the contractor's extensive relationship with agency employees.

Consultant John L. Craig, who won the \$350,000 contract to do the review, oversaw the agency's \$1.3 billion outsourced bridge repair and replacement program for six years. He stepped down as program manager of Oregon Bridge Development Partners just 13 months

ago. He was chosen over another contractor that had similar experience but offered to do the job for more than \$100,000 less.

In an email to a review oversight committee, Tammy Baney, chairwoman of the Oregon Transportation Commission, wrote that delays in the contracting process had created "an aggressive timeline that will not allow for a thorough review."

"In addition, the vending process has not formulated a contractor that is viewed as neutral," Baney said. "To have a cloud over this work before it even begins is unfortunate. At this time I believe it would not be prudent to proceed as I do not see the current process as conducive to a successful outcome."

The review oversight committee, made up of transportation commissioners and former lawmakers, has asked the Department of Administrative Services to explore options for hiring a different contractor to conduct the



John L. Craig



Ted Ferrioli

See ODOT, Page 7A



AP Photo/Mark J. Terrill

Democratic presidential nominee Hillary Clinton reaches toward the falling balloons at the conclusion of the Democratic National Convention in Philadelphia, Thursday.

Democrats celebrate Clinton's moment

Local supporters cheer first female nominee

By EDWARD STRATTON
The Daily Astorian

Hillary Clinton, the first female nominee for president by a major party, accepted the Democratic Party's nomination Thursday. For her supporters, the accomplishment was long overdue.

MORE INSIDE

Clinton promises a steady hand.
Page 8A

"Quite frankly, I'm ecstatic," said Dulcye Taylor. "I think she's the best person for the job. She's the most qualified for the job."

In a nation run by white capitalist males, Taylor said, she's not surprised it took so long to have a woman as a presidential nominee. Taylor, the owner of Old Town Framing and president of the

See CLINTON, Page 8A

From farm to preserve

Conservancy buys Boneyard Ridge; will add walking trails

By LYRA FONTAINE
The Daily Astorian

North Coast Land Conservancy will permanently conserve Boneyard Ridge, a former commercial tree farm on Tillamook Head, with the goal of helping the property mature into a high-functioning temperate rainforest.

The nonprofit organization finalized the \$1.3 million acquisition of the 340-acre parcel on Wednesday.

The land is adjacent to Elmer Feldenheimer State Natural Area and Ecola State Park and west of the land conservancy's Circle Creek Habitat Reserve in the Necanicum River floodplain west of U.S. Highway 101.

"The whole ecosystem gets to flourish when you have that scale and connectivity," North Coast Land Conservancy Executive Director Katie Voelke said. "It's one of those spots in the world where a small purchase makes a huge difference."



Katie Voelke

See CONSERVANCY, Page 3A



7 29467 20121 7

