

Silent auction to benefit Alzheimer's Association

SEASIDE — Avamere at Seaside, an assisted living and memory care community, will host an evening of entertainment with a silent auction from 4 to 6 p.m. Saturday, July 23.

Enjoy live jazz piano by Shirley Yates, wine and cheese refreshments as you peruse the silent auction items. Items include dining certificates, gift cards, rounds of golf, kitchen cabinets, lawn care and more.



SUBMITTED PHOTO
Shirley Yates will perform live music.

All proceeds from the evening will benefit the Alzheimer's Association.

Yates, who performs under the moniker Shirley88, performs jazz, classic American song book, and artists like Aretha Franklin, Adele, Etta James and Norah Jones. This benefit is close to Yates and her family, since her father suffered from Alzheimer's.

If you have an item you would like to donate for the auction or want more information, contact Helen Pringle at 503-338-9878 or 541-265-5356 or call the office for Avamere at Seaside at 503-738-0900.

Avamere at Seaside is located at 2500 S. Roosevelt Drive.

Karin Temple releases sixth volume of poetry

ASTORIA — Astoria poet Karin Temple will release her sixth collection of poems in a reading and book signing on Sunday, July 24 at Grace Episcopal Church, located at 1545 Franklin Ave. The reading will begin at 3 p.m. in the church sanctuary with a reception to follow.

"Chalice of Tears" is Temple's latest book of poetry published by Radiolarian Press. The collection is written in two parts. The first part, called "The Petrified Angel," looks to

the past, Temple's own past as a "child of war" in 1940s Germany, and the cultural history of that era, lamenting the wars of the world.

In the second part, "The Holiness of Broken Things," she attempts to reconcile past darkness with beauty in a series of poems inspired by the sculptures of local artist Charles Schweigert. Photos of the sculptures are included in the book alongside the poems written in response to them. The actual sculptures will be on display in the church

during the event.

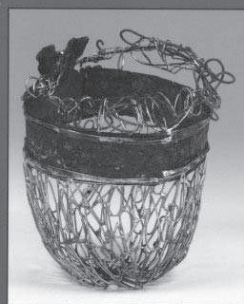
The majority of Schweigert's pieces are reliquaries for housing the remains of things we hold dear, while others are imaginary containers for capturing emotions or sentiments that can't be housed. They are lyrical interpretations of what has been lost and are ideal for translation into poetry.

The event will include readings by Temple and by guest speakers along with songs related to the poems performed by Drew Herzig and Laurie Drage, accompanied by pianist Jennifer Goodenberger. A reception and book signing will follow the program.



SUBMITTED PHOTO
Astoria poet Karin Temple, left, was inspired by sculptures by local artist Charles Schweigert for her latest book of poetry.

Chalice of Tears



Poems by
Karin Temple

SUBMITTED PHOTO
"Chalice of Tears" by Karin Temple.

Learn to manage the 'dirty dozen' of pests in your garden

Master gardeners hold workshop, plant clinic, peony roots sale July 23

ILWACO, Wash. — The Washington State University Master Gardeners of Pacific County continue their fourth year of sponsoring a series of gardening workshops in conjunction with the Columbia Pacific Heritage Museum. The intent of this joint venture is to renovate and maintain a Pacific County Master Gardener demonstration garden at the museum. The Museum is located on 115 S.E. Lake St. The Discovery Garden is located behind the museum's parking lot.

On Saturday, July 23, Pacific County Master Gar-

deners will sponsor their third 2016 workshop: "Managing Pests in Your Garden and Landscape."

Master Gardeners will speak on Integrated Pest Management. Learn how to manage the "dirty dozen" of pests in your yard. The lecture begins at 10 a.m.

After the workshop, you are invited to join a work party in the Discovery Garden. Bring your favorite gardening tools and dress for the weather.

Do you have plant questions or problems? Come ask a Master Gardener; stop by the museum anytime between 10 a.m. through 1 p.m. Saturday with your plant questions. If possible, bring samples of your plant problem. The workshop and plant clinic are free and open to the public

Over a dozen varieties of bare-root peony shrubs will be available for purchase. Bloom colors on these varieties range from deep crimson to bright pink, whites with raspberry or peppermint streaks, and even some rare yellows. Singles, doubles, and "bomb double" bloom types will all be available, including Raspberry Sundae and Sarah Bernhardt. Buying roots now will help gardeners get ready for fall planting ahead of next year's springtime blooms.

Mark your calendar for the remaining 2016 Master Gardener workshop at the Columbia Pacific Heritage Museum: "Propagating Plants from Stems, Roots, and Leaves" will be held Oct. 15.

For more information, contact Bev Arnoldy at bevarnoldy@gmail.com

marie
POWELL
GALLERY

ORIGINAL FINE ART

on the waterfront
port of ilwaco, wa

marie-powell.com
360-244-0800

"roses", monotype by marie powell