



PHOTO BY DAMIAN MULINIX

Maypole dancers wait during the opening ceremony of the 2014 Naselle Finnish American Folk Festival.

## Finn Fest calls for art submissions

NASELLE, Wash. — The 2016 Naselle Finnish American Folk Festival, set for this July, is fishing for artwork that reflects the lives and experiences of local and regional families.

Work may be rendered in any medium and may include paintings, drawings, photos and prints, jewelry, weaving, sculpture, pottery, basketry, woodcarvings and furniture.

The Art Exhibit will be displayed July 29 and 30 at the Naselle Finnish American Folk Festival from 10 a.m. to 6 p.m.

Works ready to display will be accepted at the Naselle High School in room 308 from 11 a.m. to 3 p.m. July 27 and 28. For

information, alternative time arrangements or directions call Morgan Hamilton at 360-484-7840 or email gallery@nasellefinnfest.com

The festival, started in 1982, is held on the last weekend in July of every even-numbered year. This year will be the 18th Finn Fest. Finn Fest is a public event that celebrates the Finnish heritage of Naselle and its surrounding communities. The theme this year is My Finnish Memories.

The festival features music, dancing, exhibits, lectures, films, food demonstrations, kantele, a golf tournament, genealogy workshops, and authentic foods. For more information, visit nasellefinnfest.com

## NCLC welcomes volunteers to Weed Warrior Wednesdays

SEASIDE — Each Wednesday now through Sept. 14, the North Coast Land Conservancy stewardship crew will host Weed Warrior Wednesdays, a weekly event to tackle various projects on NCLC lands.

Staff and volunteers are welcome to join any or all Wednesdays this summer. Stewardship events will take place from 10 a.m. to 1 p.m. Meet at the barns at Circle Creek Habitat Reserve, and work will often take place somewhere on that property. Sometimes volunteers will carpool to another site, depending on what the stewardship crew determines to be the priority for that day.

W<sup>3</sup> days will usually consist of weed removal activities but may include other kinds of projects, such as trail building and maintenance, native plant caretaking, and site cleanups.

Why join NCLC for these projects? For fun — and also to help take care of NCLC lands and to assist the stewardship team in its duties. The crew is looking forward to connecting more with the community through W<sup>3</sup>,



PHOTO BY KATHERINE LACAZE  
Volunteers can help out at Circle Creek Habitat Reserve.

establishing new relationships and maintaining old ones.

Contact Land Steward Eric Owen at landsteward@nclctrust.org to get on the W<sup>3</sup> email list. He'll send out an email each week (usually Monday) providing a run-down that week's work. Also contact Owen with questions or for directions.

In general, volunteers should bring water, a snack, gloves and rubber boots, and a hat or sunscreen. The NCLC stewardship crew has boots and gloves on site if you need them and will provide tools for various tasks.



ERIC RYAN ANDERSON/COURTESY OF THE ARTIST

Blind Pilot will perform at the Liberty Theater on Aug. 19.

## Tickets on sale for Blind Pilot concert

ASTORIA — Blind Pilot is coming to Astoria.

The Astoria-rooted indie folk band will perform in concert at 7 p.m. Aug. 19 at the Liberty Theater.

The concert is part of a summer and fall tour in honor of the band's newest album,

"And Then Like Lions," which drops Aug. 12.

Tickets will go on sale through TicketsWest at 2 p.m. Friday, June 17. They're available at the Liberty Theater Box Office at 503-325-5922 ext. 55 and online at ticketswest.com

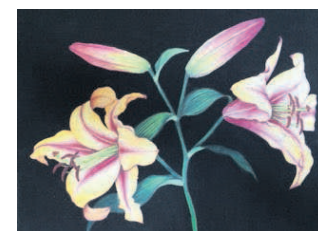
## Hoffman Center to host botanical drawing classes

MANZANITA — The Hoffman Center for the Arts in will offer Botanical Drawing classes on four Tuesdays in June and July. Weather permitting, the classes will be held outside in the Hoffman Gardens.

Led by Dorota Haber-Lehigh, the instruction is designed for students 18 and up, and all skill levels are welcome. Classes will be held from 1:30 to 4 p.m. June 28, July 5, 19 and 26.

Tuition will be \$80 for the series or \$25 drop in fee. Basic materials will be provided, or students may bring their own. Drawing supplies may be purchased from Haber-Lehigh for \$5 per session or \$15 for the series.

Students will learn the fundamentals of botanical drawing using pencils, color pencils and other dry media to portray accurate shapes and master shading techniques to create three-di-



SUBMITTED PHOTO

Dorota Haber-Lehigh will teach four botanical drawing classes at the Hoffman Center.

mensional effects.

Haber-Lehigh is an artist, educator, linguist and a forager with a passion for native plants. She lives in Seaside and is the author of several coloring books, including "ABC of Native Plants of the Coastal Pacific Northwest" and "Native Berries of the Coastal Pacific Northwest."

Her email is dorota@iinet.com, and her website is www.dorotahaberlehigh.com

Register for the classes online at hoffmanblog.org

### Crossword Answer

A	S	S	U	M	E	A	B	A	C	K	P	S	Y	C	H	I	C		
D	O	U	B	T	S	P	O	M	P	O	T	E	A	M	U	S	A		
D	R	P	E	P	P	E	R	S	P	R	A	T	S	I	G	N	S		
U	T	E	R	O	T	E	E	S	L	O	M	F	I	N	I	T	E		
P	A	R	C	P	A	S	B	A	B	Y	D	R	R	U	T	H			
	B	O	O	R	S	P	E	A	S	L	E	E	S	O	O	N			
	B	O	O	N	E	C	O	A	L	J	A	N	E	T	U	M	P		
D	R	W	H	O	S	Y	O	U	R	D	A	D	D	Y	I	N	T	E	R
O	I	L	S	S	E	X	T	S	M	A	Y	I	S	E	E				
I	B	M	G	E	N	E	P	O	T	T	E	R	N	S					
	E	V	A	N	S	D	R	J	C	R	E	W	T	R	E	A	T		
	P	R	E	O	P	A	L	S	H	A	H	A	N	A	B				
	M	I	N	O	R	C	A	C	H	O	I	R	A	F	R	O			
G	R	O	S	S	T	H	E	W	I	Z	A	R	D	O	F	D	R	O	Z
M	E	H	S	L	A	Y	S	T	A	L	L	G	R	E	A	T			
S	A	B	E	A	T	T	G	E	R	E	L	E	A	N	N				
	D	O	D	R	N	O	H	A	R	M	D	E	N	T	C	I	G		
G	O	O	G	O	M	T	A	G	M	E	N	B	R	I	C	E			
I	N	H	A	S	T	E	T	H	E	D	O	C	T	O	R	I	S	I	N
F	L	O	R	E	T	S	N	A	V	A	J	O	S	O	C	C	E	R	
S	Y	O	S	S	E	T	M	A	Y	O	R	A	S	H	O	R	E		

## BOAT RACES

### CULLABY LAKE

June 25 and 26, 2016 • 10am - 6pm

Lake will be closed to the public.

*Spectators welcome!*

Presented by: Columbia Outboard Racing Association

Sanctioned by: American Power Boat Association

Questions? Contact Mike Johnson at 503-381-8173