

# Unity slate divides state GOP convention

## A conflict over party rules

By **PARIS ACHEN**  
Capital Bureau

SALEM — A slate of candidates seeking positions as Oregon delegates to the Republican National Convention ran on a platform that they would help unify the party. Instead, the slate and a conflict over ballot rules caused division in the party during the statewide convention in Salem Saturday.

The slate included 48 candidates — mostly political insiders — to fill every position in the delegation. Among them were state Reps. Bill Post, R-Keizer, and Greg Barreto, R-Cove, Sen. Kim Thatcher, R-Keizer, and Ourania Yue, the wife of Republican National Committeeman Solomon Yue Jr.

The slate came to the convention with campaign materials, set out on attendees' chairs, and endorsements from 13 organizations, including the Ted Cruz and Donald Trump campaigns, Oregon Right to Life

and Oregon Small Business Association.

When some party members saw the ballot for at-large delegates, they stopped proceedings and argued that the ballot violated rules the party adopted in October.

The rules called for the party to vote for their top 10 choices for at-large delegates. The 10 candidates who received the most votes would win seats on the delegation, while those who ranked 11th to 20th in number of votes would win posts as alternates.

Instead, Republican Party Chairman Bill Currier instructed party members to vote for 10 delegates and 10 alternates, and he rejected the challenge to the ballot.

A party member then requested a vote on whether to uphold or reject Currier's decision. Currier held a standing vote in which a majority rejected his decision and clarified that the body would be voting only for their top 10 choices. The top 10 choices would become delegates; the second top 10 vote getters would serve as alternates.

## Failed to follow rules

Yamhill County Precinct Committeeman Jim Bunn, a former U.S. representative for Oregon, said the ballot failed to follow the rules adopted in October and also gave the grassroots unity slate an advantage.

"The rules were very clear, and they didn't accommodate a slate," Bunn said. "I am not going to judge people's motives, but the ballot would have given an advantage to the slate."

If the slate had just 51 percent of the vote, it could have selected both the 10 delegates and all 10 alternates, he said.

"There are people who are not running on slates, and with a slate and that kind of ballot, you can lock down all of the voices on the delegation," Bunn said.

"I don't know if the slate has 51 percent of the body, but one group shouldn't get together and control the whole delegation."

Yue, the national committeeman, said party leaders faced a dilemma when they determined the ballot instructions because some candidates had filed only as alternates. A vote for the top 10 choices for delegate would

have effectively forced those candidates out of the running for alternate, because party members would only be casting votes for delegates.

"In a democratic society, candidates have a right to stand for election, and voters have the right to vote for the candidates they want," Yue said. "If you ask the body only to vote for default, I think that's a problem, but I have respect for the body's decision, if that is what they want."

## 'Something in common'

Yue said he disagrees the ballot to vote for 10 delegates and 10 alternates gave the unity slate an advantage. The body may vote for whichever mix of candidates they choose, he said.

"The slate is a group of people who decided to get together because we have something in common so let's run together," Yue said.

The grassroots unity slate was running on the premise that they would unify the party. All of the candidates had to sign a pledge to refrain from chang-

ing the "main elements of the Republican Party Platform." That includes the party's principles of pro-life, traditional marriage, the right to bear arms, free enterprise, smaller government and lower taxes.

Yue said the slate's dual endorsements by the Cruz and Trump campaigns were unique. Cruz, a U.S. senator from Texas, suspended his campaign after losing the Indiana primary in May. Trump, a billionaire businessman, is the party's presumptive nominee.

"Oregon has the only grassroots slate endorsed by the Trump and Cruz campaign," Yue said. "In other states, they are still fighting each other. In Oregon, we are already working together."

In the end, nine of the 10 at-large delegates elected were from the unity slate.

More than 800 people attended Saturday's convention. Out of those, 654 were precinct committeepersons who were responsible for voting for the party's delegates and alternates.

The party was scheduled to select a total of 28 delegates to

represent the state at the national convention in Cleveland in July. Eighteen of the delegates are pledged to Trump; five each are pledged to Cruz and Ohio Gov. John Kasich.

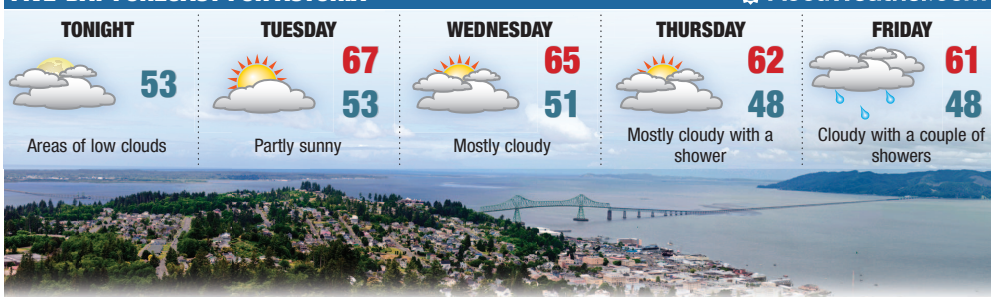
Out of the 28, three are chosen from each of Oregon's five congressional districts. Another 10 are elected to fill at-large positions, and three so-called "automatic delegates" serve by virtue of their positions as state chairman, national committeeman and national committeewoman.

## Consolidated convention

The event marked the first time in at least 30 years that the Oregon Republican Party has held a consolidated statewide convention. During the last presidential election in 2012, the party held five different conventions, one for each of the state's congressional districts. Oregon was the only state in the nation that year without a centralized caucus to select delegates to the national convention.

*The Capital Bureau is a collaboration between EO Media Group and Pamplin Media Group.*

## FIVE-DAY FORECAST FOR ASTORIA



## ALMANAC

Astoria through Sunday.  
**Temperatures**  
 High/low ..... 70°/58°  
 Normal high/low ..... 63°/49°  
 Record high ..... 88° in 1898  
 Record low ..... 40° in 1988  
**Precipitation**  
 Sunday ..... 0.00"  
 Month to date ..... 0.09"  
 Normal month to date ..... 0.51"  
 Year to date ..... 37.31"  
 Normal year to date ..... 34.12"

## SUN AND MOON

Sunset tonight ..... 9:04 p.m.  
 Sunrise Tuesday ..... 5:25 a.m.  
 Moonrise today ..... 7:20 a.m.  
 Moonset today ..... 10:36 p.m.

## UNDER THE SKY

**Tonight's Sky:** Emerging in the eastern night sky are the three stars of the Summer Triangle - Vega of Lyra, Deneb of Cygnus and Altair of Aquila.

Source: Jim Todd, OMS

## TOMORROW'S TIDES

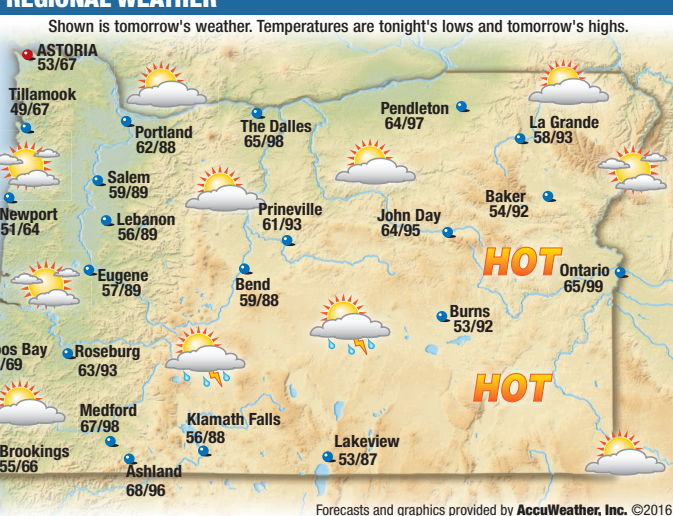
**Astoria / Port Docks**  
**Time High Time Low**  
 3:04 a.m. 9.5 ft. 10:09 a.m. -1.5 ft.  
 4:35 p.m. 8.1 ft. 10:08 p.m. 2.3 ft.

## NATIONAL CITIES

City	Today	Tues.
Atlanta	81 68 t 88 63 s	
Boston	84 63 pc 79 60 pc	
Chicago	79 55 pc 68 52 pc	
Denver	80 56 t 82 58 t	
Des Moines	81 55 s 76 55 s	
Detroit	80 55 t 68 49 pc	
El Paso	99 74 c 100 74 pc	
Fairbanks	59 41 r 66 51 pc	
Honolulu	83 73 pc 83 72 pc	
Indianapolis	83 57 pc 70 54 s	
Kansas City	85 55 s 77 58 s	
Las Vegas	106 81 s 108 83 s	
Los Angeles	72 59 pc 74 60 pc	
Memphis	88 67 s 85 62 s	
Miami	89 80 t 87 79 t	
Nashville	87 64 s 82 56 s	
New Orleans	90 76 t 92 75 t	
New York	85 68 s 85 62 pc	
Oklahoma City	87 61 s 88 66 s	
Philadelphia	87 68 s 85 62 pc	
St. Louis	89 61 s 78 57 t	
Salt Lake City	95 66 pc 90 66 t	
San Francisco	72 56 pc 73 56 pc	
Seattle	85 59 pc 82 55 s	
Washington, DC	86 68 s 85 61 pc	

Weather (W): s-sunny, pc-partly cloudy, c-cloudy, sh-showers, t-thunderstorms, r-rain, sf-snow flurries, sn-snow, i-ice.

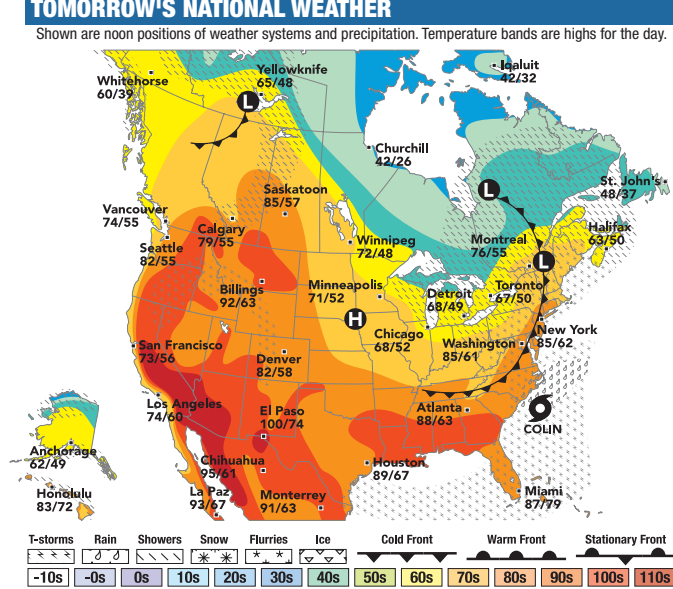
## REGIONAL WEATHER



## REGIONAL CITIES

City	Today	Tues.
Baker City	91 54 pc 92 56 t	
Bend	92 59 pc 88 58 pc	
Brookings	75 56 s 65 54 pc	
Eugene	91 57 s 89 55 pc	
Ilwaco	66 55 pc 63 53 pc	
Klamath Falls	91 56 c 88 52 pc	
Medford	101 67 s 98 63 pc	
Newberg	89 59 s 87 55 pc	
Newport	65 51 s 64 52 pc	
North Bend	69 55 s 68 56 pc	
Olympia	88 51 s 81 51 s	
Pendleton	100 64 s 97 67 pc	
Portland	91 62 s 88 59 pc	
Roseburg	95 63 s 93 59 pc	
Salem	92 59 s 89 57 pc	
Seaside	67 54 pc 65 53 pc	
Spokane	95 66 s 93 65 s	
Springfield	91 54 s 88 52 pc	
Vancouver	89 60 s 86 57 pc	
Yakima	103 64 s 101 65 s	

## TOMORROW'S NATIONAL WEATHER



## OBITUARY

### Patricia Ann Lupton

Astoria

March 12, 1948 — May 4, 2016

Patricia Ann Lupton, 68, passed away unexpectedly on May 4 at her home in Astoria. Patti lived a full life, during which she was a daughter, a mother, a grandmother, a partner, a wife and a devoted friend.

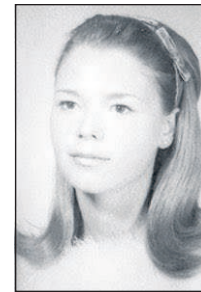
Patti grew up in Honolulu, Hawaii, the daughter of Capt. and Mrs. Allyn Cole Jr., who preceded her in death. Later in her life, Patti found and established a loving relationship with her biological mother, Dixie, who passed away several years ago. She was also blessed with two half-sisters in the early 1990s, after spending most of her life an only child. Jeanie, who resides in California, and Teri, who also passed in 2011.

In the 1980s and early 1990s, Patti lived in Portland, Oregon, after attending the University of Portland. By the mid-1990s, she had made her home in Astoria, Oregon.

Patti was a loving and supportive mother to her daughter, Catherine, and a strong and loving presence in the lives of her grand-



Patricia Lupton



children, Robert and Noelle. In addition to her daughter, grandchildren, and beloved doggies, Patti leaves behind her partner of 15 years, David.

Patti is remembered as a woman of high intelligence, humor and beauty. She was hysterically funny and incredible fun to be around. For those reasons and so many others, we will miss Patti each and every day.

Patti is survived by many grateful family and friends who knew the treasure of her unconditional love, and the strength of her unwavering support. Please help us celebrate Patti's life by donating in her name to Sisters of the Road (<http://sistersoftheroad.org>) or the Oregon Humane Society.

A celebration of life will be held in mid to late June at the Astoria Moose Lodge.

Hughes-Ransom Mortuary in Astoria was in charge of the arrangements. An online guest book may be signed at [www.hughes-ransom.com](http://www.hughes-ransom.com)

## LOTTERIES

### OREGON

#### Sunday's Pick 4:

1 p.m.: 6-9-4-9  
 4 p.m.: 6-8-4-7  
 7 p.m.: 2-4-7-2  
 10 p.m.: 1-4-5-7

#### Saturday's Megabucks: 1-6-9-17-41-45

Estimated jackpot: \$5.7 million

#### Saturday's Powerball: 16-20-22-43-64, Powerball: 17

Estimated jackpot: \$123 million

#### Saturday's Pick 4:

1 p.m.: 8-9-6-9  
 4 p.m.: 1-6-9-9  
 7 p.m.: 3-9-7-2  
 10 p.m.: 0-3-5-5

#### Friday's Pick 4:

1 p.m.: 9-0-4-4  
 4 p.m.: 0-8-9-9  
 7 p.m.: 8-1-0-7  
 10 p.m.: 2-6-4-1

### WASHINGTON

#### Sunday's Daily Game: 8-6-7

#### Sunday's Keno: 01-03-04-05-06-07-10-16-22-26-37-38-44-46-47-48-53-55-70-75

#### Sunday's Match 4: 07-11-19-21

#### Saturday's Daily Game: 8-6-9

#### Saturday's Hit 5: 12-21-28-34-36

Estimated jackpot: \$100,000

#### Saturday's Keno: 10-12-22-29-38-40-44-49-50-52-56-60-70-72-73-74-76-77-78-79

#### Saturday's Lotto: 10-28-37-41-45-46

Estimated jackpot: \$2 million

#### Saturday's Match 4: 02-05-18-19

#### Friday's Daily Game: 2-9-2

#### Friday's Keno: 13-14-15-18-21-23-27-29-35-43-55-57-59-63-67-69-71-72-75-77

#### Friday's Match 4: 06-09-16-17

#### Friday's Mega Millions: 32-54-65-66-71, Mega Ball: 10

Estimated jackpot: \$251 million

## DEATHS

### June 4, 2106

MYERS, Annabel Margaret, 90, of Astoria, died in Astoria. Ocean View Funeral & Cremation Service of Astoria is in charge of the arrangements.

### OLMSCHIED, Wayne Jay, 88, of Astoria, died in Astoria. Ocean View Funeral & Cremation Service of Astoria is in charge of the arrangements.

### Public Meetings

#### MONDAY

#### Youngs River Lewis & Clark Water District Board, 6 p.m., 34583 U.S. Highway 101 Business.

#### Knappa School District, 6 p.m., budget committee, 6:30 p.m., board meeting, Knappa High School library, 41535 Old U.S. Highway 30.

#### Astoria City Council, 7 p.m., City Hall 1095 Duane St.

#### TUESDAY

#### Seaside Community Center Commission, 10 a.m., 1225 Avenue A.

#### Port of Astoria, 10:30 a.m., workshop, noon, budget committee, old Port offices, 422 Gateway Ave.

#### Seaside Library Board, 4:30 p.m., City Hall, 1131 Broadway.

#### Miles Crossing Sanitary Sewer District Board, 6 p.m., 34583 U.S. Highway 101 Business.

#### Seaside Planning Commission, 7 p.m., City Hall, 989 Broadway.

#### Cannon Beach City Council, 7 p.m., City Hall, 163 E. Gower St.

### CLARIFICATION

#### Scope of crimes

The series of crimes that Vincent Davidson-Gilbert was involved in nearly a decade ago included burglary and assault. The scope of his past crimes was not included in a story on Davidson-Gilbert's struggle with drugs and crime on page 1A May 30.

### OBITUARY POLICY

The Daily Astorian publishes paid obituaries. The obituary can include a small photo and, for veterans, a flag symbol at no charge. The deadline for all obituaries is 9 a.m. the business day prior. Obituaries may be edited for spelling, proper punctuation and style. Death notices and upcoming services will be published at no charge. Notices must be submitted by 9 a.m. the day of publication. Obituaries and notices may be submitted online at [www.dailyastorian.com/forms/obits](http://www.dailyastorian.com/forms/obits), by email at [ewilson@dailyastorian.com](mailto:ewilson@dailyastorian.com), placed via the funeral home or in person at The Daily Astorian office, 949 Exchange St. in Astoria.

Have you waited until the end of the year to utilize your insurance benefits?

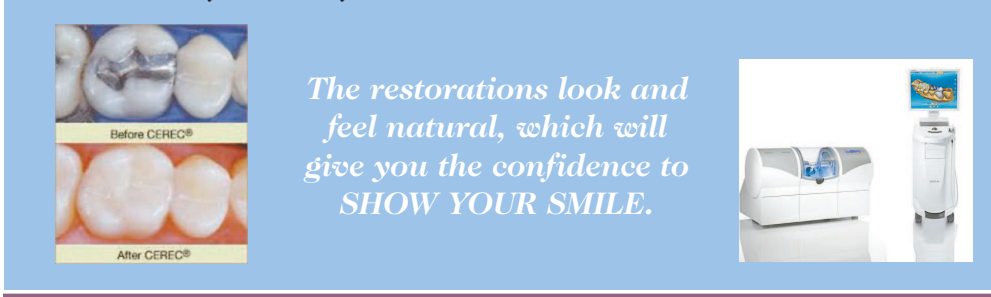
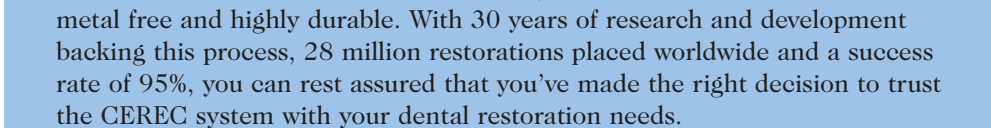
## Klemp Family Dentistry now offers CEREC by Sirona ceramic dental restorations.

Your new crowns can be completed in a single appointment!

Typical restorations require uncomfortable temporaries and impression trays, and returning for a secondary appointment for fillings, veneers or full crowns.

CEREC restorations are all color matched, metal free and highly durable. With 30 years of research and development backing this process, 28 million restorations placed worldwide and a success rate of 95%, you can rest assured that you've made the right decision to trust the CEREC system with your dental restoration needs.

The restorations look and feel natural, which will give you the confidence to SHOW YOUR SMILE.



**KLEMP FAMILY DENTISTRY**  
 1006 West Marine Drive, Astoria  
 (503) 468-0116  
[www.klempfamilydentistry.com](http://www.klempfamilydentistry.com)

## The Daily Astorian

Established July 1, 1873  
 (USPS 035-000)

Published daily, except Saturday and Sunday, by EO Media Group, 949 Exchange St., PO Box 210, Astoria, OR 97103 Telephone 503-325-3211, 800-781-3211 or Fax 503-325-6573. POSTMASTER: Send address changes to The Daily Astorian, PO Box 210, Astoria, OR 97103-0210

[www.dailyastorian.com](http://www.dailyastorian.com)

MEMBER OF THE ASSOCIATED PRESS

The Associated Press is entitled exclusively to the use for republication of all the local news printed in this newspaper.

SUBSCRIBER TO THE NEW YORK TIMES NEWS SERVICE

MEMBER CERTIFIED AUDIT OF CIRCULATIONS, INC.

## SUBSCRIPTION RATES

Effective July 1, 2015

### HOME DELIVERY

EZpay (per month).....\$11.25

13 weeks in advance.....\$36.79

26 weeks in advance.....\$70.82

52 weeks in advance.....\$135.05

### MAIL

EZpay (per month).....\$16.60

13 weeks in advance.....\$51.98

26 weeks in advance.....\$102.63

52 weeks in advance.....\$199.90

Circulation phone number: 503-325-3211

Periodicals postage paid at Astoria, OR