



Submitted photo

Wooden plant containers and trellises will be for sale at the event.

Learn the basics of pruning Master gardeners to hold workshop

ILWACO, Wash. — The Washington State University Master Gardeners of Pacific County begin their fourth year of sponsoring a series of gardening workshops in conjunction with the Columbia Pacific Heritage Museum. The intent of this joint venture is to renovate and maintain a Pacific County Master Gardener demonstration garden at the museum.

The winter workshop “Pruning Basics” and a plant clinic begins with a lecture at 10 a.m. Saturday, Feb. 13 at the Columbia Pacific Heritage Museum. The workshop and plant clinic are free and open to the public.

Master gardener volunteers will demonstrate proper pruning techniques for trees and shrubs. After the workshop, attendees can practice pruning skills on the trees and shrubs in the museum’s Discovery Garden. Bring pruning tools and dress for the weather.

Plant questions or problems? Ask a master gardener. Stop by the museum anytime between 10 a.m. to 1 p.m. with any plant questions. If possible, bring samples of the plant problem.

There will also be a wooden container and trellis sale of various shapes and sizes. Credit cards will be accepted.

Don’t miss out; three more master hardener workshops are scheduled at the museum:

- April 9, “Right Plant, Right Place,”
- July 23, “Managing Pests in Your Garden & Landscape,”
- Oct. 15, “Propagating Plants from Stems, Roots & Leaves.”

The museum is located on 115 S.E. Lake St. and the Discovery Garden is located behind the museum’s parking lot. For more information, contact Bev Arnoldy at bevarnoldy@gmail.com

PUG BOUNDERS ANTIQUE MALL
Annual Hagggle Day
 Sunday, Feb 14, 10am to 5pm
 Antiques • Nautical Items
 Glassware • Vintage Decor
 892 Marine Drive, Astoria
 (503) 338-0101
 Vendors are ready to **deal**

Go on an arts and antiques walk in Ocean Park Feb. 13

OCEAN PARK, Wash. — Enjoy the romance and passion of the beach in winter, and explore six locations during Ocean Park’s Art and Antiques Walk, set for 10 a.m. to 5 p.m. Saturday, Feb. 13.

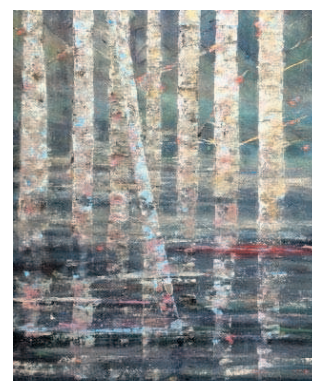
Pick up a sweetheart pink map of locations at the Ocean Park Area Chamber of Commerce; the Long Beach Peninsula Visitors Bureau; online at facebook.com/opartandantiques; all locations; or by emailing ShopOceanPark@gmail.com

On the tour are the Bette Lu Krause Studio, Naquaiya Studio, Bay Avenue Gallery, Forgotten Treasures Antiques and Collectibles Mall, Weir Studios, and Beach Home Old and New.



Submitted photos
“Heart Beat” is a piece of glass work.

Expect to find nature-inspired art, soft and warm knitware, mosaics, cards, prints, clay creatures, tremendous yard art treasures, fused glass the colors of sea gems, and a huge clearance sale (at one of



“Reflections of the Fall” by Bette Lu Krause.

the six locations).

Bonnie McBride will present a glass on glass mosaic demonstration at Bay Avenue Gallery, and most locations offer sweet treats to visitors.

Sign up to be on the group’s private email list and you will



Naquaiya Studio will have many knitted items on view and for sale.

automatically be entered in the Come Back and See Us drawing for a \$25 gas card.

More information is available on the Ocean Park Art and Antiques Facebook page.

Tom Horning to speak at Listening to the Land Geologist examines water’s impact on the local landscape

SEASIDE — Join Seaside geologist Tom Horning for the second of the 2016 Listening to the Land presentations, “The Geology of Water,” taking place at 6 p.m. Wednesday, Feb. 17 at the Seaside Public Library. Admission is free, and refreshments will be served.

During his talk, Horning will lead an imaginary tour of the local shoreline through time, as seawater squished sediments into rock that now forms the horizon, and as rain carved out canyons. Horning will review the cycle of rainfall, evaporation and precipitation — including recent

discoveries about how rain, sea and ice have radically altered this coast in just the past 10,000 years and how they continue to shape it.

A Seaside native, Horning has a master’s degree in geology from Oregon State University. After a varied career as an exploration geologist, he returned to Seaside in 1994 and became a natural hazards and geotechnical consultant doing

business as Horning Geosciences.

Listening to the Land is a monthly winter speaker series offered January through May and presented by North Coast Land Conservancy and the Necanicum Watershed Council in partnership with the Seaside Public Library. The theme in 2016 is water.

For more information, visit NCLCtrust.org.



Submitted photo

Geologist Tom Horning will speak at Seaside Public Library on Feb. 17.

Pickup COLORFUL FLOWERS for YOUR Special PERSON
Valentine Special \$5 to \$12 grams/ 14 to 30% THC

Pick any assortment of six Edibles \$5 each/10 mg

Every \$30 purchase receives an extra Flower or Edible NC

“Say I LOVE YOU” with Gifts to make THEIR Day from Mr Doobes
Concentrates \$30/g - Oil \$45/half g - Tinctures \$20/100 mg

MR. DOOBES
 Natural High Store

Visit us in **RAYMOND, WA.**
 On Hwy 101 between Raymond & South Bend Mile Marker 56
 2870 Ocean Ave Raymond WA 98577

DAILY 10^{AM} - 7^{PM}
360-875-8016
mrdoobes@gmail.com
 Anyone from any state, age 21 and over, can purchase products at Mr. Doobes.

This product has intoxicating effects and may be habit forming. Marijuana can impair concentration, coordination and judgment. Do not operate a vehicle or machinery under the influence of this drug. There may be health risks associated with consumption of this product. For use only by adults twenty-one and older. Keep out of reach of children.