

# BUD

## OF THE MONTH

featuring **MR. DOOBIES**

**Q What is a tolerance break, and can it rejuvenate the effects of cannabis?**

**A.** A tolerance break is a short-term break from cannabis to clear one's head and body of cannabinoids, notably THC. While it is possible to become highly tolerant of cannabis and its myriad effects, the buildup can be reversed by taking a break from the drug. Some consumers benefit from reducing their rate of consumption, while others choose to abstain completely for a set duration so that the more noticeable, psychoactive effects of cannabis can return at fuller potency.



### Great White Strain - Indica

Great White is a potent strain that is known for its ability to provide a strong indica body buzz very quickly. For this reason it's often recommended medically to treat chronic pain ailments. The sativa qualities of this strain keep this heavy hitter from being a complete knockout, but it isn't recommended for days when a lot of work needs to get done.

1444 Commercial Street, Astoria THC- 24.337% CBD - .13% MMD# - 69714  
503-468-0881  
Tested by: Northwest Premier Labs 913281



### Island Sweet Skunk Strain - Sativa

Island Sweet Skunk, sometimes called Sweet Island Skunk, is a sativa strain that users enjoy for its energetic effects. The flavor is most easily described as "sweet skunk," where tropical fruit flavors take the lead. Often the fruity aroma is likened to grapefruit. Originally bred by Federation Seed Company in Canada, this strain is a descendant of Skunk #1 and grows tall, straight, high-yielding plants. Some varieties of Island Sweet Skunk have a heightened CBD content to help patients treating anxiety, inflammation, and muscle spasms.

1444 Commercial Street, Astoria THC- 21.16% CBD - .01% MMD# - 69714  
503-468-0881  
Tested by: Green Haus Labs 15120406

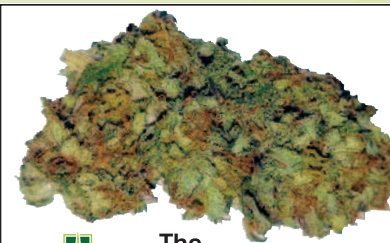


2911 Marine Dr., Astoria  
503-325-3276 • www.thefarmacy420.com

### Blueberry Essence Strain- Hybrid

**Strain Highlights-** Blueberry Essence is a high-CBD cannabis strain bred by Life Gardens, in Washington. The undisclosed genetics produce purple buds that come with a mellow, fruity aroma and an earthy aftertaste that entices medical marijuana patients with its ability to combat an array of symptoms and conditions. Blueberry Essence relaxes away pain with a tingling sensation that reverberates throughout your extremities, providing a calming sense of bliss that eventually levels off to help induce sleep.

THC- 11.69% CBD- 11.57%  
Tested by: MRX Labs - Test # PD151106-032



2911 Marine Dr., Astoria  
503-325-3276 • www.thefarmacy420.com

### White Master Kush Strain- Hybrid/Sativa Dominant

**Strain Highlights-** Super frosty as usual looks like rolled in powdered sugar great smooth smoke and buzz, almost feel bad break those beauties up, Master Grower Robert knocked it out the park again! Smell Dominant Kush. Taste: kushy, spicy/metallic. Buzz: nice head effect, lasts a while kept you motivated, great daytime even though buzz is heavy but happy.

THC- 27.54% CBD- 0.97%  
Tested by: MRX Labs - Test # PD151222-082



1803 S. Roosevelt Suite C - Seaside, OR  
503.717.5045 • www.highway420.net

### Big Bud Strain- Indica dominant hybrid

**Strain Highlights-** With an earthy and spicy aroma, Big Bud delivers deeply relaxing full-body effects true to its indica lineage. The effects last for quite some time (three hours is common). The fruity, grape-like taste and smell the smoke produced is very appealing.

THC- 25.51% CBD- 1.0% MMD#- 86889  
Tested by: Greenleaf Labs



1803 S. Roosevelt Suite C - Seaside, OR  
503.717.5045 • www.highway420.net

### Blackberry Strain- 50/50 hybrid

**Strain Highlights-** The Blackberry strain is considered one of the better smelling and tasting strains available. Covered in frost it instantly catches your eye amid the other strains. The Nuggets also have a slightly purple tint to them, especially when you break it open and look inside, hence the name blackberry. Blackberry is known for its balance of an active sativa buzz and calming Indica effects.

THC- 21.88% CBD- 0.38% MMD#- 86889  
Tested by: Greenleaf Labs