



Submitted photo by Sebastiaan Petiet

Samantha Crain will perform at the Sou'Wester Lodge on Friday, Jan. 22.

Sou'Wester Lodge hosts folk rocker Samantha Crain

SEAVIEW, Wash. — Samantha Crain, an Oklahoma-born songwriter with Choctaw heritage, will present her newest collection of songs, "Under Branch & Thorn & Tree," at the Sou'Wester Lodge at 8 p.m. Friday, Jan. 22.

Crain teamed up again with producer John Vanderslice (the Mountain Goats, Spoon) for the album, released in July 2015. Vanderslice used synthesizers and string arrangements to embellish Crain's heartfelt stories of the working class.

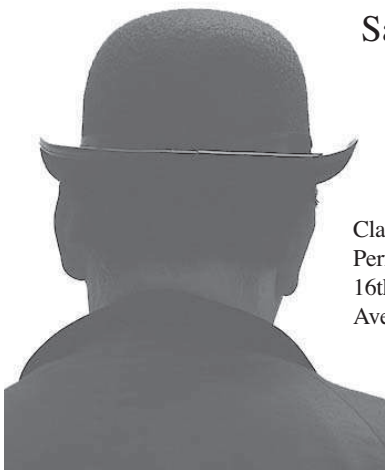
Crain's songs are full of

expansive melodies that veer off in unpredictable directions, with lyrics that explore conflicting emotions with insight and compassion. Her work has been praised for dark lyrics and emotional delivery.

She has a jazz singer's phrasing, often breaking words into rhythmic fragments that land before and after the beat, stretching syllables or adding grace notes to uncover nuances in her lyrics.

The Sou'Wester Lodge is located at 3728 J Place. For more information, call 360-642-2542.

Partners for the PAC presents:



Samuel Beckett's

WAITING FOR GODOT

Clatsop Community College Performing Arts Center
16th Street and Franklin Avenue, Astoria

7 p.m., Jan. 29 and 30
3 p.m., Jan. 31
7 p.m., Feb. 5 and 6
Tickets: \$15, at the door

Funded in part by Oregon Cultural Trust/Clatsop County Cultural Coalition

Attend La Fete fashion show in Astoria

Local designers craft new styles out of second-hand finds

ASTORIA — The Harbor presents its second annual La Fête fashion show fundraiser from 7 to 11:30 p.m. Saturday, Jan. 30 at the Astoria Masonic Temple, located at 1572 Franklin Ave. Emcees Daylight Cums and Ginger Vitus, two of Astoria's most fashionable drag queen superstars, will be hosting the event.

Twelve local designers have been challenged to put

La Fête

7 to 11:30 p.m. Saturday, Jan. 30

Astoria Masonic Temple
1572 Franklin Ave., Astoria

21 and older

\$7

together two outfits using only items found at Déjà Vu thrift store. Their models will stomp

down the runway in a competition to crown Astoria's next top designer.

The two winners of last year's show, Becky Tonkin and Ryan Saunders, will join Jeanine Fairchild and Judith Stokes at the judging table. All attendees will be able to vote for their favorite styles for the people's choice winner.

Local restaurants have donated food and beverages for

this event. There will also be a hosted bar, auction, a live performance by Jessamyn Grace and an after party following the fashion show. Come dressed in your best and celebrate Astoria's stylistic creativity, have fun and dance the night away.

Admission is \$7, and the event is for ages 21 and older only. All proceeds will go to The Harbor, Inc. The mission of The Harbor is to assist in the intervention, recovery and wellbeing of survivors of domestic and sexual violence.

Musica Maestrale presents French Baroque sacred vocal music at Astoria concert Jan. 31

ASTORIA — Early music ensemble Musica Maestrale will present the concert "Lessons of the Dark: Sacred Vocal Works of François Couperin" at 3 p.m. Sunday, Jan. 31 at Grace Episcopal Church.

Admission is \$15 at the door, and doors open at 2:30 p.m. A reception will follow the concert.

Portland sopranos Arwen Myers and Catherine van der Salm will perform "Trois Leçons de Ténèbres" by Couperin, accompanied by an intimate continuo of viola da gamba, played by Musica Maestrale veteran Max Fuller, and theorbo, a large lute, played by Musica Maestrale artistic director and past Asto-

ria Music Festival performer Hideki Yamaya.

"Leçons de ténèbres" means "lessons of darkness" and is a genre of French Baroque music. Usually performed in a private performance of virtuoso chamber music, leçons de ténèbres developed from the music of the tenebrae, a Christian religious service celebrated in the week leading up to Easter. The tenebrae service uses the text of the Lamentations of Jeremiah, allegorically applying the siege and desolation of Jerusalem to the three days of mourning (Maundy Thursday, Good Friday and Holy Saturday) for Christ between his crucifixion and resurrection.



Submitted photo

Lutenist and guitarist Hideki Yamaya is the artistic director of Portland-based early music ensemble Musica Maestrale.

During tenebrae, text from the Lamentations of Jeremiah are sung to a specific Gregorian reciting tone, and the high Renaissance's polyphonic choral settings inspired the later French Baroque genre, which is defined by a performance of one or two vocalists with continuo instruments.

Couperin's "Trois Leçons de Ténèbres" were published in 1714. The first two lessons are for solo voice, followed by the third for two equal voices.

Musica Maestrale, a Portland-based early music ensemble, brings together local musicians with national and international reputations to perform the exquisite, varied repertoire from between the 16th and 18th centuries. Using only historically accurate



Submitted photo by Kelly Kruse Photography

A native of Augusta, Georgia, Arwen Myers is currently the music associate at Trinity Episcopal Cathedral in Portland, and she is an active freelance artist.



Submitted photo

Catherine van der Salm, soprano, is a native of the Northwest and lives in Vancouver, Washington.

instruments, Musica Maestrale explores the tone, depth and character of the quieter, temperamental Renaissance and Baroque instruments, and aims to provide a more intimate musical experience than that of the modern orchestral concert.

