



Submitted photo by Don Frank.

"Envy" by Don Frank.

See 'Confessions' on display CBAA, LightBox present joint art show

CANNON BEACH — The Cannon Beach Arts Association and LightBox Photographic Gallery of Astoria have collaborated to present "Confessions," a new art exhibition that will host a reception from 5 to 7 p.m. Saturday, Jan. 16 at the Cannon Beach Gallery.

For this art show, 12 artists were drawn from the memberships of both organizations and invited to respond to the theme "confessions." The invited contributors were selected by Don Frank of Cannon Beach Arts Association and Michael and Chelsea Granger of LightBox Photographic Gallery.

Participating photographers include: Rebecca Akporiaye, Michael Datoli, Roger

Opening Reception

5 to 7 p.m. Saturday, Jan. 16
Cannon Beach Gallery
1064 S. Hemlock St., Cannon Beach
503-436-0744

Dorband, Don Frank, Drea Frost, Chelsea Granger, Eleanor Gorman, Andrea Mace, David Lee Myers and Leigh Oviatt.

The Cannon Beach Gallery is located at 1064 S. Hemlock St. For more information, call 503-436-0744.

Learn about towns that became Warrenton Author Susan L. Glen to speak at next In Their Footsteps lecture

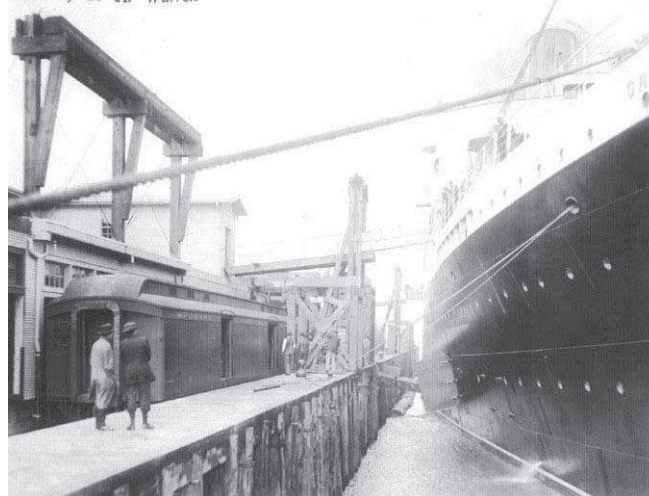
ASTORIA — Lewis and Clark National Historical Park, Fort Clatsop will hold the next In Their Footsteps free speaker series event at 1 p.m. Sunday, Jan. 17. The program is "The Towns that Became Today's Warrenton" by Susan L. Glen.

Warrenton was incorporated in February 1899, and is a city comprised of many earlier towns and villages. These include Skipanon, Flavel, Hammond and Fort Stevens, as well as Lexington, which was the first county seat for Clatsop County until 1879 when it moved to Astoria.

This illustrated talk shares some history of each of these towns as they grew and became the present city of Warrenton.

Glen has compiled photos and written text for five books in Arcardia Publishing's Images of America series including "Warrenton-Hammond." Her other titles are "Governors Island," "Seaside: 1920-1950," "Fort Stevens" and "USCG Air Station and Group Astoria." Each of these books features more than 200 vintage images,

Estate of D. K. Warren



Submitted photo

The towns of Flavel, Skipanon, Hammond and Lexington became what we know today as Warrenton. Flavel was one of four ports for the Great Northern Steamship line.

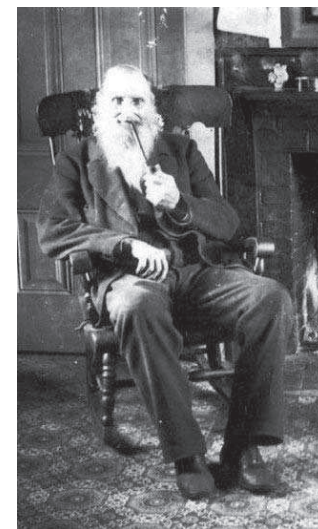
In Their Footsteps

1 p.m. Sunday, Jan. 17
Fort Clatsop Visitor Center
92343 Fort Clatsop Road, Astoria
503-861-2471
Free

es, capturing often forgotten bygone times and bringing to life the people, places and

events that defined a community.

Glen has had relatives in the area since the 1800s. In November 1847, one relative by marriage had the original donation land claim that became the town of Hammond. Glen came to Warrenton in



Submitted photo

Bartholomew Kindred was the owner of the land claim that became part of Hammond.

1976. She is a former school teacher, loves history and is very active with the Daughters of the American Revolution and several historical and genealogical societies including the Warrenton-Hammond Historical Society.

Her "Warrenton-Hammond" book will be available for purchase in the Lewis & Clark National Park Association bookstore in the visitor center during this event, and she will have a book-signing after her talk.

This monthly Sunday forum is sponsored by the Lewis & Clark National Park Association and the park. These programs are held in the Netul River Room of Fort Clatsop's visitor center and are free of charge. For more information, call the park at 503-861-2471.

Crossword Answer

B	O	A	R	D	S	A	B	A	S	E	S	H	E	L	S	E	W			
U	N	C	O	R	K	D	R	I	L	L	T	E	A	M	S	A	D	O		
F	O	R	M	E	I	F	I	A	M	E	L	E	C	T	E	D	I	N	K	
F	R	O	A	B	A	N	W	I	N	T	E	R	R	N	A	S				
			I	M	U	S	S	C	O	O	T		I	M	I	T				
	J	U	S	T	M	O	R	E	O	F	T	H	E	O	L	D	O	N	E	S
B	O	N	D			E	T	O		S	M	U	S	T	I	L	T			
O	S	S	O	A	A	M	I	L	N	E	B	S	S	A	C	E	Y			
W	H	E	N	O	P	P	O	N	E	N	T	S	A	T	T	A	C	K	M	E
T	U	N	E	U	P	S		D	E	C	A	L	D	D	T					
O	A	T		G	L	O	W	S		E	M	B	E	R	S	S	N			
			P	H	I	H	U	L	A	S		O	N	A	D	A	T	E		
D	O	N	A	T	E	T	O	M	Y	C	A	M	P	A	I	G	N	N	O	W
A	N	E	W		D	A	Y		E	C	L	A	I	R	S		A	D	O	T
L	Y	O	N	S		L	O	S		I	M	P				L	E	G	S	
E	X	P	E	C	T	C	U	T	S	I	N	M	E	D	I	C	A	R	E	
			H	E	I	R		A	P	N	E	A		A	D	A	B			
J	O	Y	S		A	R	A	M	I	S		C	R	I	P		S	P	A	
A	N	T		I	V	E	G	O	T	A	L	O	T	T	O	L	E	A	R	N
I	C	E		H	E	A	T	S	E	N	S	O	R		M	E	R	G	E	D
L	E	S		S	L	R	S		S	E	T	H	S		S	T	R	A	Y	S



Submitted photo

The town of Flavel was the site of the Flavel Hotel. Passengers came to stay at the hotel while waiting to board steamships bound for San Francisco.

**The On-Air Radio Auction is
January 23rd,
9am to 1pm**

Playing today's best music



CLAMMY 99.7

All The Music You Dig!