



Submitted photo by Brian Grubb

Gerle Haggard Band will perform Merle Haggard's timeless music at 8 p.m. Saturday, Sept. 12 at the Sou'Wester Lodge.

Gerle Haggard plays the Sou'Wester Lodge Sept. 12

SEAVIEW, Wash. — The Sou'Wester Lodge will host a performance by Gerle Haggard Band at 8 p.m. Saturday, Sept. 12.

Gerle Haggard Band brings the best of Merle Haggard's timeless music to audiences who've been loving songs like "Mama Tried," "Misery and Gin" and "Working Man Blues" for nearly five decades, as well as introducing these and many more classics to a whole new audience.

This eight-piece, all-women band features a line-up of musicians who weave beautiful instrumentation, tight

Gerle Haggard

8 p.m. Saturday, Sept. 12

Sou'Wester Lodge

3728 J Place, Seaview, Wash.

360-642-2542

Free

harmonies and a big heap of showmanship into a full-throated entertainment event.

The Sou'Wester Lodge is located at 3728 J Place. For more information, call 360-642-2542.

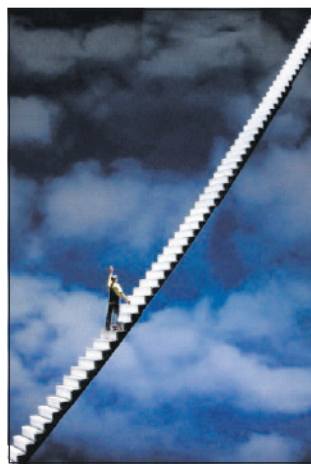
Imaginary landscapes depict mysteries of technology

Portland photographer Mark Crummett opens new show at LightBox Photographic

ASTORIA — LightBox Photographic Gallery will host an opening and artist reception for photographer Mark Crummett of Portland from 6 to 9 p.m. Saturday Sept. 12. Featuring work from a number of Crummett's series, the exhibit will reveal a window to the reality of his imaginary landscapes. His work portrays the world of technology's revelations and mysteries with the use of miniature figures and sets. Crummett's photographs will be on display to Oct. 7.

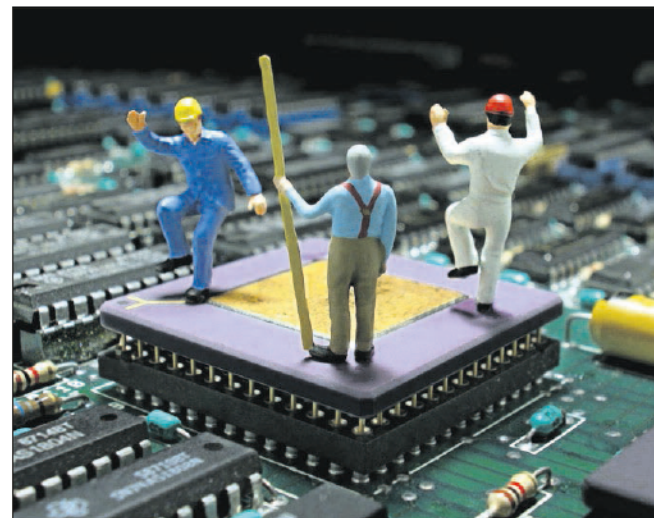
"My photographs play with scale, and in doing so, touch on the deeper idea of our relationships — with technology, with the world around us, with ourselves and with each other," says Crummett. "By recontextualizing the three-quarter-inch HO-scale model railroad figures, I let them help drive the narrative. Removed from their industrial-age, mid-century, middle American environment, what other stories do they have to tell?"

"Because I'm distorting the expected scale, there's often a playful, dreamlike quality to my images," Crummett continues. "To me, this reflects the increasing absurdity of 'real life.' Which is stranger, worshipping a 10-foot-tall vacuum tube or standing in days-long line to buy the latest tech toy? The universe, it's said, is not



Submitted photos by Mark Crummett

"Climbing" by Mark Crummett.



"Blessing the Chip" by Mark Crummett.

Opening reception

6 to 9 p.m. Saturday, Sept. 12

LightBox Photographic Gallery

1045 Marine Drive, Astoria

503-468-0338

only stranger than we imagine, it's stranger than we can imagine."

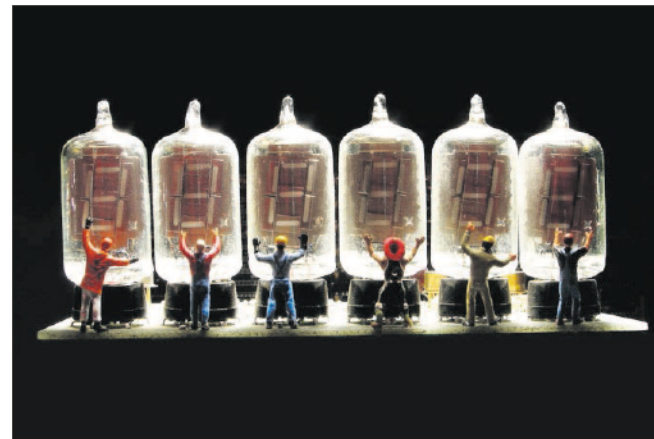
Crummett was raised in a house full of art in a suburb of Washington, D.C. His father, Clovis Crummett, was a writer, photographer, painter and assemblage artist and an important early influence.

Self-taught in photography since his teens, Crummett was a photographer, photojournalism instructor and editor in the United States Army. After earning his journalism degree from Oregon State University, he worked as a newspaper photographer in Maryland and as a digital picture editor in Virginia. Along the way he earned a couple of computer certifications.

Crummett now combines his interest in technology and visual art. "I find the stuff inside a computer even more interesting and mysterious than the stuff it can do," he says. He now uses technological castoffs as his raw material and subject matter. He lives in



"Taken Together" by Mark Crummett.



"The Bonding" by Mark Crummett.

Portland with his wife, Lisa. To view his work, visit www.markcrummett.com

New work from LightBox Darkroom members is also displayed in the gallery. LightBox offers supporting memberships for those who would like to help promote the

creative photographic arts on Oregon's north coast. LightBox offers scanning, photo restorations, archival digital printing and framing. It is located at 1045 Marine Drive. For more information, call 503-468-0238 or email info@lightbox-photographic.com

COME BY AND DISCOVER DIVERSE STRAINS OF CANNABIS

SATIVA STRAIN -
CREATIVE, MINDFUL, HAPPY

INDICA STRAIN -
RELAXED, PEACEFUL

MR. DOOBEE'S

Natural High Store

ONLY PURE HAPPINESS

Come visit us in **RAYMOND, WA.**

On Hwy 101 between Raymond & South Bend
2870 Ocean Ave Raymond WA 98577
(across from the small cement plant)

home of the **1 OZ. DOOBIE!**

ALL KUSH FARMS PRODUCTS
SUPER VENDOR SALE
BRING IN OR MENTION THIS AD FOR
FANTASTIC PRICES

DAILY 10AM - 8PM

360-875-8016

mrdoobees@gmail.com

Anyone from any state, age 21 and over, can purchase products at Mr. Doobees. This product has intoxicating effects and may be habit forming. Marijuana can impair concentration, coordination and judgment. Do not operate a vehicle or machinery under the influence of this drug. There may be health risks associated with consumption of this product. For use only by adults twenty-one and older. Keep out of reach of children.